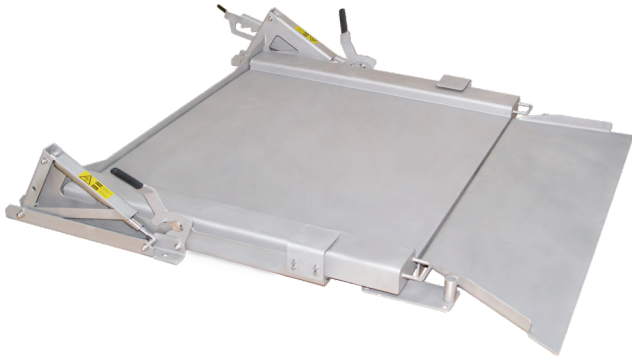
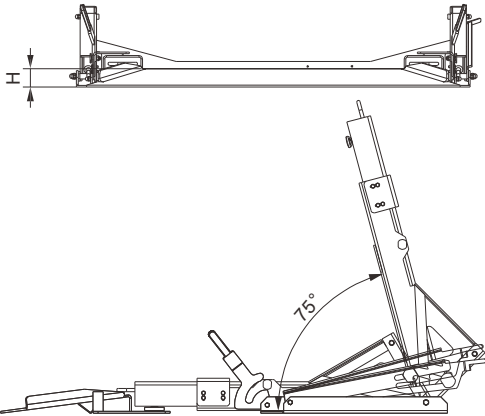
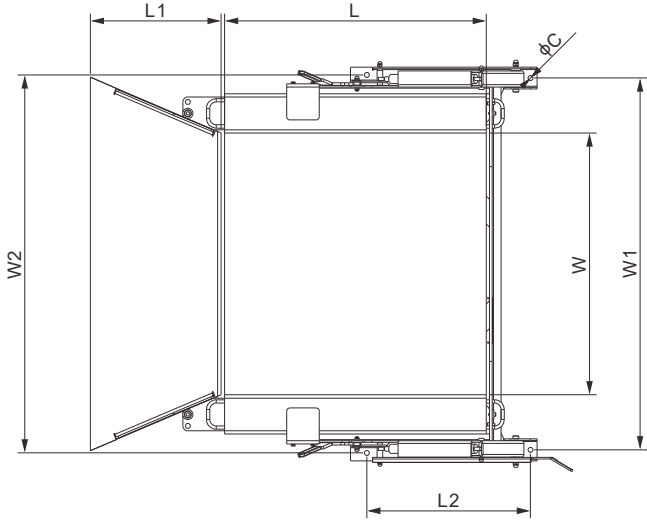


Hygienic Scale Platform, Stainless Steel



Features:

- Adjustable foot height (about 5 mm / 0.2") for level installation
- Hydraulic cylinder lifting mechanism
- Stainless steel construction (304/316), IP68 rated
- Low-profile, ergonomic platform
- Hygienic design for easy cleaning and contamination control
- Suitable for wet and sanitary environments
- Multiple surface treatments available
- Optional mounting stand for the display indicator



DIMENSIONS

PLATFORM SIZE	L	L1	L2	W	W1	W2	H	C
mm								
HSP08	850	400	500	850	1186	1205	56	15
HSP10	1000	400	500	1000	1336	1355	56	15
HSP12	1250	400	500	1250	1586	1605	56	15
HSP15	1500	400	500	1250	1586	1605	56	15
inches (conversion of above dimensions)								
HSP08	33.46	15.75	19.69	33.46	46.69	47.44	2.20	0.59
HSP10	39.37	15.75	19.69	39.37	52.60	53.35	2.20	0.59
HSP12	49.21	15.75	19.69	49.21	62.44	63.19	2.20	0.59
HSP15	59.06	15.75	19.69	49.21	62.44	63.19	2.20	0.59

Hygienic Scale Platform, Stainless Steel

SPECIFICATIONS

PART NUMBER	RATED CAPACITY	DIVISION	LOAD CELL CAPACITY	APPROX. WEIGHT
HSP08A-4B-250kg	250kg	0.05kg	563YSMT-250lb	160kg / 353lb
HSP08A-4B-500kg	500kg	0.1kg	563YSMT-500lb	
HSP08A-4B-500lb	500lb	0.1lb	563YSMT-250lb	
HSP08A-4B-1Klb	1Klb	0.2lb	563YSMT-500lb	
HSP10A-4B-250kg	250kg	0.05kg	563YSMT-250lb	188kg / 414lb
HSP10A-4B-500kg	500kg	0.1kg	563YSMT-500lb	
HSP10A-4B-1000kg	1000kg	0.2kg	563YSMT-1.25Klb	
HSP10A-4B-500lb	500lb	0.1lb	563YSMT-250lb	
HSP10A-4B-1Klb	1Klb	0.2lb	563YSMT-500lb	
HSP10A-4B-2.5Klb	2.5Klb	0.5lb	563YSMT-1.25Klb	
HSP12A-4B-250kg	250kg	0.05kg	563YSMT-250lb	247kg / 545lb
HSP12A-4B-500kg	500kg	0.1kg	563YSMT-500lb	
HSP12A-4B-1000kg	1000kg	0.2kg	563YSMT-1.25Klb	
HSP12A-4B-500lb	500lb	0.1lb	563YSMT-250lb	
HSP12A-4B-1Klb	1Klb	0.2lb	563YSMT-500lb	
HSP12A-4B-2.5Klb	2.5Klb	0.5lb	563YSMT-1.25Klb	
HSP15A-4B-500kg	500kg	0.1kg	563YSMT-500lb	274kg / 604lb
HSP15A-4B-1000kg	1000kg	0.2kg	563YSMT-1.25Klb	
HSP15A-4B-1Klb	1Klb	0.2lb	563YSMT-500lb	
HSP15A-4B-2.5Klb	2.5Klb	0.5lb	563YSMT-1.25Klb	

MATERIAL AND SURFACE TREATMENT OPTIONS*

Stainless Steel Type	Surface Treatment
4: SS304	B: Sandblasted
6: SS316	C: Sandblasted + Ceramic Shot
	E: Electropolished
	M: Mirror Polished

* The "-4B" suffix in the part number indicates the material and surface treatment. For example, "-4B" denotes stainless steel 304 with a sandblasted finish."

OPTIONAL ACCESSORIES

- Indicators (page 198-201)



Product Datasheet Disclaimer

Information Changes:

All product specifications, statements, information, and data (collectively, the “Information”) in this catalog or made available elsewhere by ANYLOAD are subject to change. Customers must verify the applicability of the Information at the time of order placement.

Accuracy and Reliability:

While all Information is believed to be accurate and reliable, it is presented without guarantee, warranty, or responsibility of any kind, expressed or implied.

Laboratory Conditions:

Data listed in the datasheet is produced within controlled laboratory settings and may not be reproducible without exact replication of all metrological conditions. Users must validate that a product with the described properties is suitable for their applications.

Interchangeability:

Statements of interchangeability with other manufacturers are based on ANYLOAD’s knowledge at the time of publication and are not intended to constitute any warranty concerning the substitutability of an ANYLOAD product with one made by another Manufacturer.

Warranty Voidance:

Any use of the product outside of specifications or any storage or installation inconsistent with product guidance voids any warranty.

Intended Use:

The information is intended for use only by customers who have the requisite experience and capability to determine the correct products for their application. ANYLOAD provides technical advice without obligation or liability for the advice given or results obtained.

Component Failures:

Although ANYLOAD designs and manufactures its products to stringent quality and safety standards, isolated component failures may still occur. Applications requiring high reliability or safety should employ suitable designs or safeguards to ensure that component failure does not result in personal injury or property damage.

High-Risk Applications:

Unless specifically agreed to in writing, ANYLOAD has not tested or certified its products, services, or deliverables for use in high-risk applications (e.g., medical life support, nuclear facilities, weapon systems). ANYLOAD makes no assurances that the products are suitable for high-risk uses. Under no circumstances does ANYLOAD warrant or guarantee suitability for any customer design or manufacturing process.

Contact authorized ANYLOAD personnel for special terms and conditions regarding products designed for specific safety requirements.

Safety Measures:

All product-related warnings, cautions, and notes must be observed. Customers should not assume that all safety measures are indicated or that other measures may not be required.

California Proposition 65:

⚠ WARNING: Some products manufactured or distributed by ANYLOAD may contain trace amounts of chemicals known to the State of California to cause cancer, birth defects, or other reproductive harm. These substances are present in minimal quantities and are typically encapsulated within our products. This warning is provided to enable you to make informed decisions as a consumer.