



1-855-269-5623
www.anyload.com

PN-260101

SERVICE MANUAL

V1.0.0

© ANYLOAD Weigh & Measure Inc. All rights reserved.

ANYLOAD® is a registered trademark of ANYLOAD Weigh & Measure Inc.

All other brand or product names mentioned in this document are trademarks or registered trademarks of their respective owners.

All information contained in this document is, to the best of our knowledge, complete and accurate at the time of publication. ANYLOAD Weigh & Measure Inc. reserves the right to make changes to the technology, features, specifications, and design of its equipment without prior notice.

The most current version of this document, along with any software, firmware, and other product updates, can be found on our website:

www.anyload.com

Legal Notice

ANYLOAD products are subject to our **Standard Terms and Conditions of Sale, Warranty Policy**, and applicable regulatory compliance requirements as they may be updated without notice. It is the user's responsibility to ensure proper installation, operation, and maintenance of the equipment as outlined in this manual and in accordance with all relevant laws and standards.

ANYLOAD Weigh & Measure Inc. disclaims all warranties not expressly stated in the Warranty Policy, including but not limited to implied warranties of merchantability and fitness for a particular purpose. ANYLOAD shall not be liable for any direct, indirect, incidental, or consequential damages arising from the use or inability to use this equipment.

CONTENTS

1. Introduction 2

 1.1 Safety..... 2

2. Weight Configuration 4

3. Setting Gravity Constant..... 4

4. Wireless Pairing 5

5. Firmware Update..... 7

6. Specifications..... 10

Revision History:

Record with brief description of all revisions made to product or manual

| Version | Date | Description |
|---------|--------------------|-------------------------------|
| 1.0.0 | September 15, 2025 | First public release version. |
| | | |
| | | |
| | | |
| | | |
| | | |
| | | |

The most current version of this document, along with any software, firmware, and other product updates, can be found on our website:

www.anyload.com

1. Introduction

This manual provides information on installation, configuration, calibration and servicing of the PART# [Category].

For questions regarding this manual or the operation of ANYLOAD products, please contact your authorized ANYLOAD distributor or visit our website at www.anyload.com for support resources and service information.

1.1 Safety

READ this manual BEFORE operating or servicing this equipment or systems with this equipment incorporated.






FOLLOW these instructions carefully.

DO NOT allow untrained personnel to operate, clean, inspect, maintain, service, or modify this equipment.

SAVE and distribute this manual for future reference.

Failure to follow the instructions or heed the warnings could result in injury or death. Contact any ANYLOAD dealer or distributor for replacement manuals.

Indicative Markings:

| Symbol | Significance |
|--|---|
|  WARNING  | Warns of a potentially dangerous situation which can result in serious physical injury or death |
|  CAUTION | Warns of a potentially dangerous situation which can result in slight or moderate physical injury |
| Notice | Failure to comply to information with this marking may lead to damage to property |
|  Important | Important information about the product |
|  Tip | Application tips and other information that may be helpful |
| <i>For emphasis (Italics)</i> | Italics are used to emphasize key information |

General Safety:

WARNING

ONLY qualified professionals approved should carry out intrinsically safe installations. This work involves extensive knowledge of the product, specific safety standards, and the potentially hazardous environment in which it will

- Do not allow minors or inexperienced individuals to operate this unit.
- Ensure the unit is fully assembled before operation.
- Keep hands and fingers away from slots, openings, or any potential pinch points.
- Do not use this product if any component appears cracked or damaged.
- Avoid making alterations or modifications to the unit.
- Do not remove or obscure any warning labels.
- Do not submerge the unit in water.
- Before opening the unit, ensure the power cord is disconnected from the power source. Disconnect all power sources before servicing, as multiple power sources may be present. Failure to do so may result in property damage, personal injury, or death.
- For permanently connected equipment, incorporate a readily accessible disconnect device in the building's installation wiring.

- Pluggable units must be installed near an easily accessible socket/outlet.
- Use only copper or copper-clad aluminum conductors when wiring.

Recommendations for Proper Use:

- Keep the instrument away from heat sources and direct sunlight.
- Protect the instrument from rain unless it is a special IP-rated version.
- Do not clean with water jets unless specified for IP-rated models.
- Avoid dipping the instrument in water or spilling liquids on it.
- Use a soft, dry cloth for cleaning; do not use solvents or abrasive materials.
- Do not install the unit in areas with explosion hazards unless with specially rated models.
- If the working environment reaches the unit's temperature limits, ensure proper airflow around the instrument to prevent malfunctions such as sudden shutdowns or disconnections.

Disposal Guidelines:



Product Disposal: Dispose of this product at authorized waste collection centers at the end of its life cycle. Proper disposal prevents environmental and health risks and supports recycling. Illegal disposal may result in legal penalties.

Battery Disposal: Dispose of batteries at designated centers as per local laws. Batteries may contain harmful substances (e.g., Cd, Li, Hg, Pb) and must not be discarded with household waste. Improper disposal may result in legal penalties.

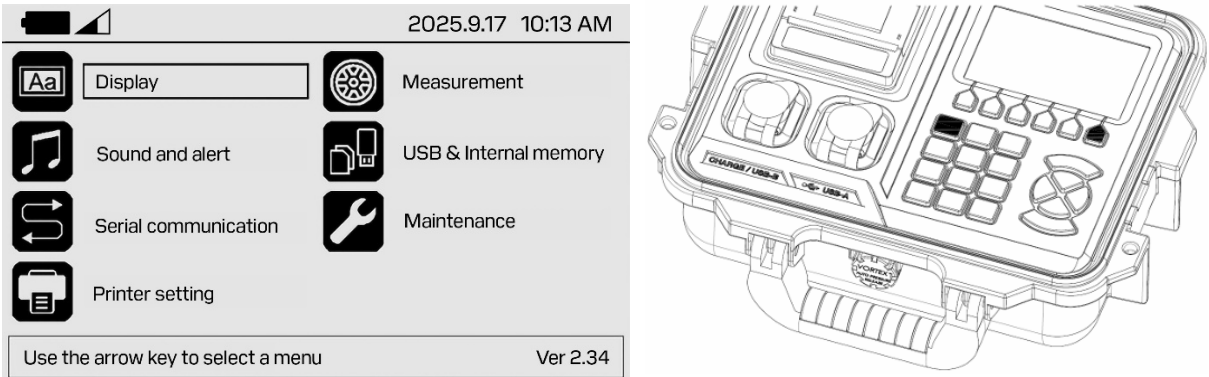
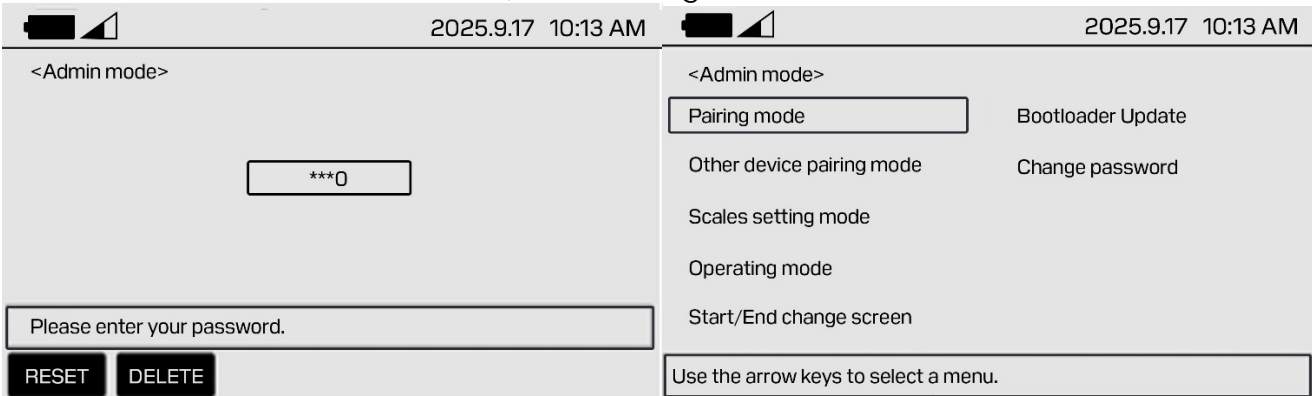
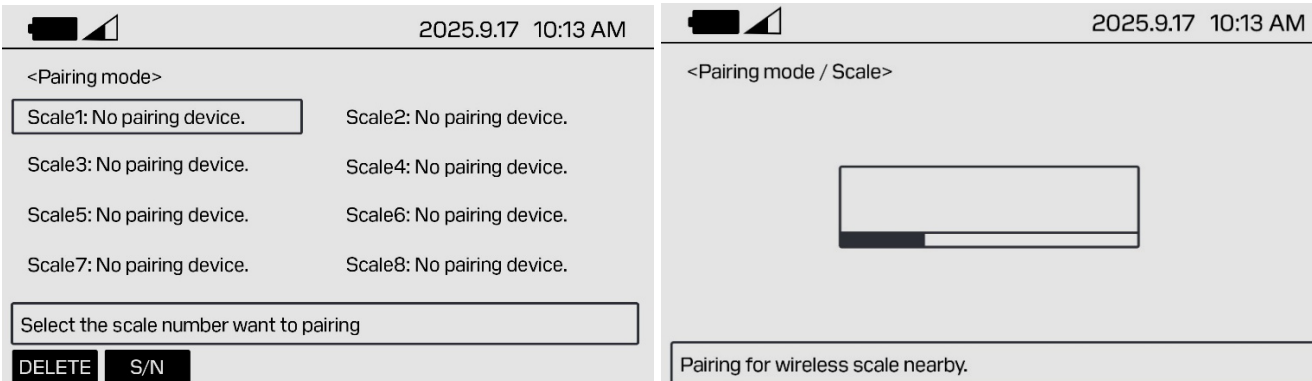
2. Weight Configuration






| No. | Description | Display |
|-----|--|------------------------|
| 1 | Press [POWER] three times to turn the device on, version information will be displayed. Press [ZERO] until 000 shows up | ON--- F=100 000 |
| 2 | Passcode: Press 111 and [ZERO] | 111 |
| 3 | Weight Calibration: Press [POWER] twice, when CAL is displayed, press [ZERO] | RFSET G-CAL CAL |
| 4 | Select number of digit by pressing [POWER], then press [ZERO] | POINT 5 |
| 5 | Select the placement of decimal point, press [ZERO] to confirm | DOT 0 |
| 6 | Enter Max Weight value, press [ZERO] to confirm | CAPA 2000 |
| 7 | Set the division value, press [ZERO] to confirm | DIV 1 |
| 8 | Make sure no load is applied, then press [ZERO] | ZERO --- |
| 9 | Span calibration: After entering the weight, press [ZERO] for two seconds. Load the device and press [ZERO] when stable. *If set to 5 division, repeat 5 times. | SET LOAD 400 |
| 10 | Live Measurement: Unload the device and press [ZERO] | 2000 END |

3. Setting Gravity Constant

| No. | Description | Display |
|-----|--|-----------------------|
| 1 | Press [POWER] three times to turn the device on, version information will be displayed. Press [ZERO] until 000 shows up | ON--- F=100 000 |
| 2 | Passcode: Press 111 and [ZERO] | 111 |
| 3 | Press [POWER] until G-CAL shows up, press [ZERO] to confirm | RFSET G-CAL |
| 4 | Enter the gravity constant at calibration site, then press [ZERO] for 2 seconds | GrAu1 9799 |
| 5 | Enter the gravity constant at use site, then press [ZERO] for 2 seconds | GrAu2 9788 |
| 6 | Exit | END |

4. Wireless Pairing

| No. | Descriptions | Display |
|-----|---|-----------------------|
| 1 | Press [POWER] three times to turn the device on, version information will be displayed. Press [ZERO] until 000 shows up | ON--- F=100 000 |
| 2 | Passcode: Press 111 and [ZERO] | 111 |
| 3 | Press [ZERO] to display a pairing code, then the device enters Pairing Mode. | RFSET 849E99 |
| 4 | <p>Enter Admin Mode by pressing [MENU], then [1] and [F6] together.</p>  <p>The screenshot shows the Admin Mode menu with the following options: Display, Measurement, Sound and alert, USB & Internal memory, Serial communication, Maintenance, and Printer setting. At the bottom, it says 'Use the arrow key to select a menu' and 'Ver 2.34'. To the right is a photo of the ANYLOAD device.</p> | |
| 5 | <p>Enter the password. Initial password is 5700, when you forget the set password, press 57005700. After, select Pairing mode menu.</p>  <p>The first screenshot shows the password entry screen with a prompt 'Please enter your password.' and buttons for 'RESET' and 'DELETE'. The second screenshot shows the Admin mode menu with options: Pairing mode, Bootloader Update, Other device pairing mode, Change password, Scales setting mode, Operating mode, and Start/End change screen. At the bottom, it says 'Use the arrow keys to select a menu.'</p> | |
| 6 | <p>Select the plate number to connect.</p>  <p>The first screenshot shows the Pairing mode screen with a list of scales (Scale1 to Scale8) and a prompt 'Select the scale number want to pairing'. The second screenshot shows the Pairing mode / Scale screen with a progress bar and the text 'Pairing for wireless scale nearby.'</p> | |

| | |
|---|--|
| 7 | <p>If successfully paired, the device's address will display. Press [ENTER] to register the device.</p> <div> <div>  2025.9.17 10:13 AM </div> <div> <div><Pairing mode / Scale></div> <div>0013A200 41849E99</div> <div>Press the [ENTER] to register the scale.</div> </div> </div> <div> <div>  2025.9.17 10:13 AM </div> <div> <div><Pairing mode></div> <div> Scale1: 0013A200 4268552C Scale2: 0013A200 4268560D Scale3: 0013A200 426858AD Scale4: 0013A200 426854D7 Scale5: No pairing device. Scale6: No pairing device. Scale7: No pairing device. Scale8: No pairing device. </div> <div>Select the scale number want to pairing</div> <div>DELETE S/N</div> </div> </div> |
| 8 | <p>Press [S/N] to register a serial number to a device. Note that this is not mandatory.</p> <div> <div>  2025.9.17 10:13 AM </div> <div> <div><Pairing mode></div> <div> Scale1: 0013A200 4268552C Scale2: 0013A200 4268560D Scale3: 0013A200 426858AD Scale4: 0013A200 426854D7 Scale5: No pairing device. Scale6: No pairing device. Scale7: No pairing device. Scale8: No pairing device. </div> <div>Select the scale number want to pairing</div> <div>DELETE S/N</div> </div> </div> <div> <div>  2025.9.17 10:13 AM </div> <div> <div><Pairing mode / S/N></div> <div></div> <div>Enter the S/N of up to 17 digits.</div> <div>RESET DELETE ENG.</div> </div> </div> <div> <div>  2025.9.17 10:13 AM </div> <div> <div><Pairing mode></div> <div> Scale1: 2818193 Scale2: 0013A200 4268560D Scale3: 0013A200 426858AD Scale4: 0013A200 426854D7 Scale5: No pairing device. Scale6: No pairing device. Scale7: No pairing device. Scale8: No pairing device. </div> <div>Select the scale number want to pairing</div> <div>DELETE S/N</div> </div> </div> |

5. Firmware Update

- 1) Download STM32 Cube Programmer
- 2) Open the battery case and disconnect the battery



- 3) Connect the updating PCB to the device



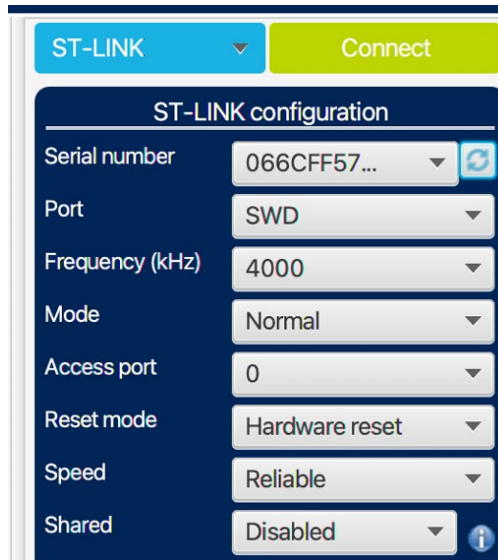
- 4) Connect the other side of the updating PCB to a PC



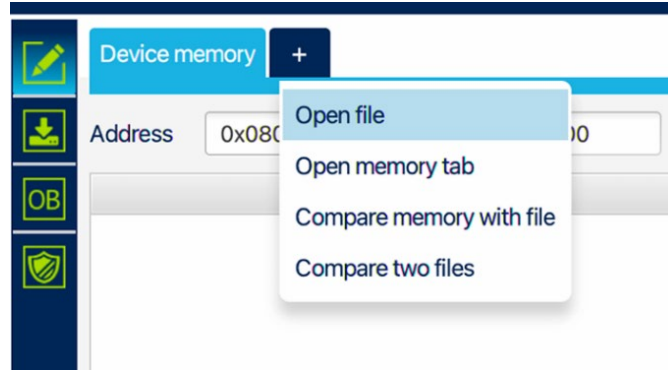
- As shown in the picture, make sure the red LED is on.

5) In the STM32 Cube Programmer

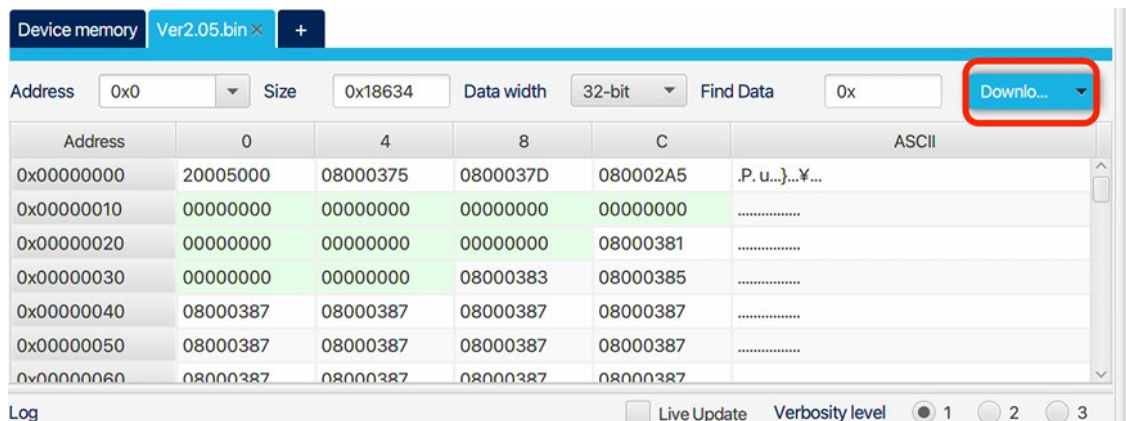
- a. Select ST-LINK on the left side bar
- b. Check the serial number. If it doesn't appear, select the icon.
- c. Set as the image shown below. (SWD, 4000, Normal, 0, Hardware res Reliable, Disabled)
- d. Press Connect



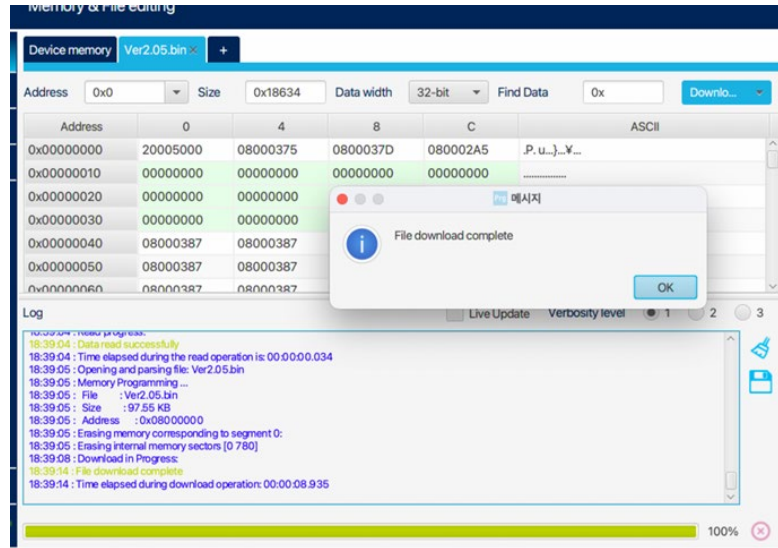
6) Open the firmware file (+ - Open file - select the *.bin file)



7) Download firmware - select the button on the top right corner



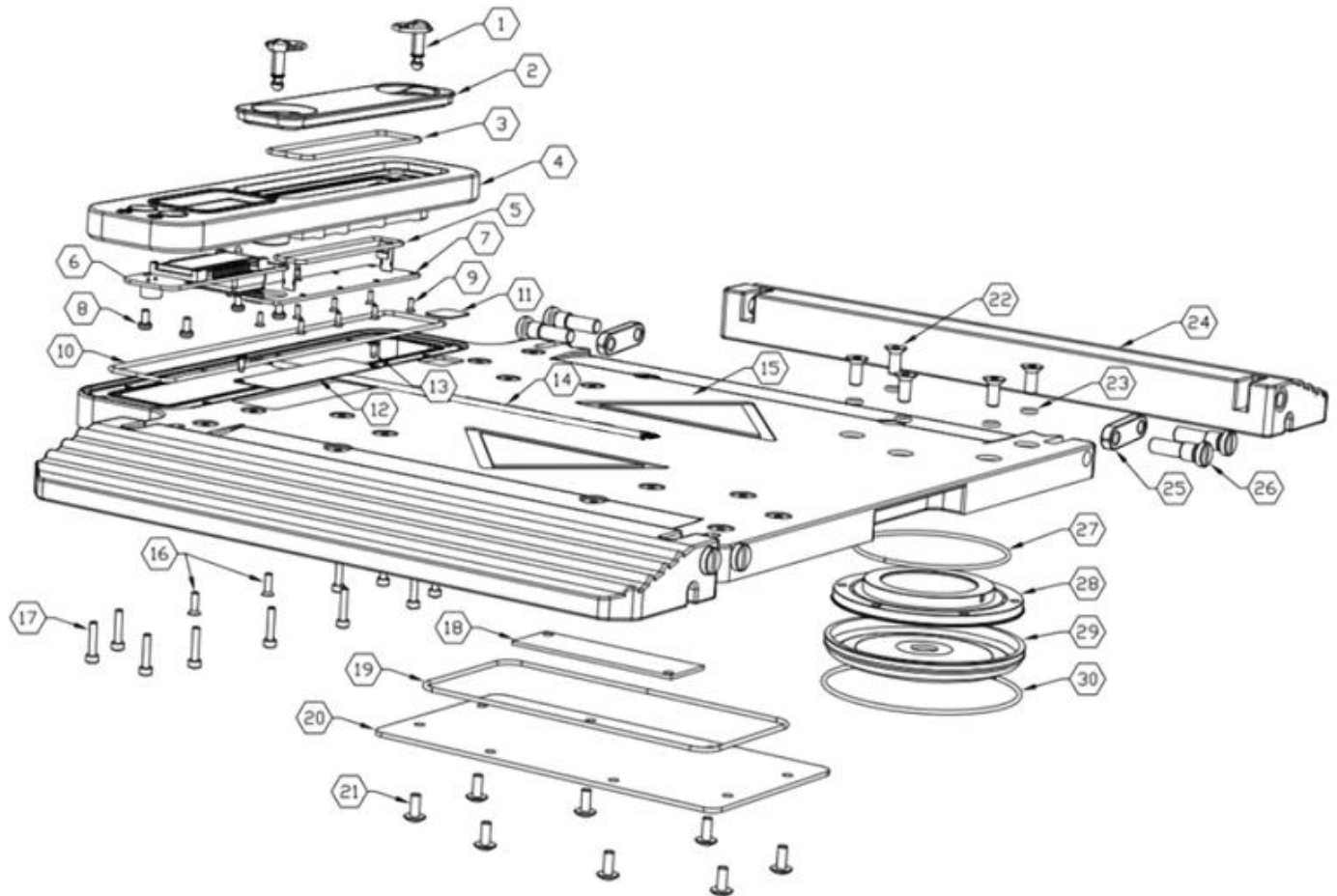
- 8) Download completed. Insert the battery again and turn the device on. Check if the firmware version that pops up when started is correct.



6. Specifications

Replacement parts for the AXA are available on a case-by-case basis. Not all parts shown below are kept as regular inventory by Anyload.

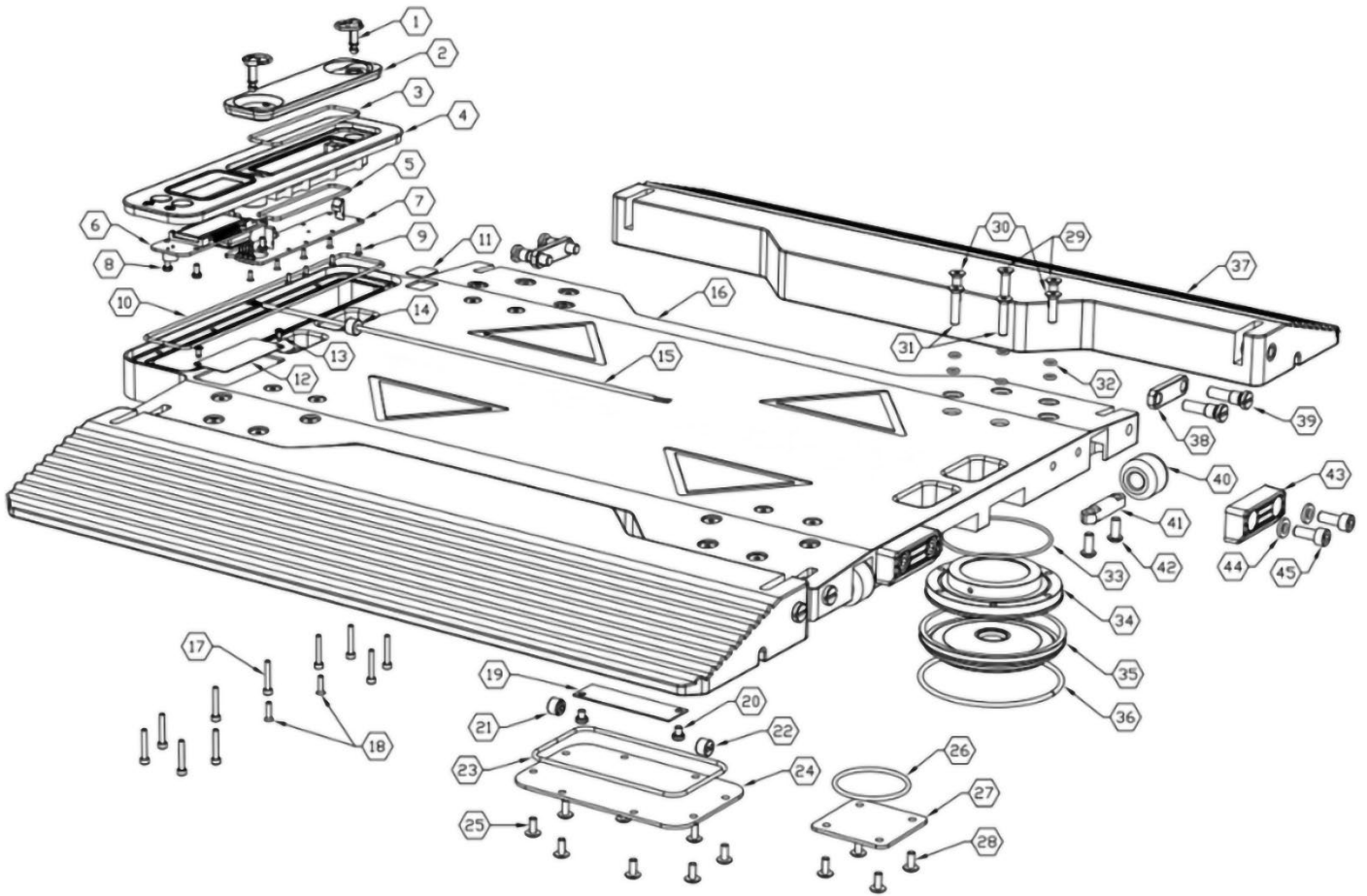
AXA-3



| No | Part Name | Specifications | Q'ty | Code |
|----|----------------|------------------------|------|----------------------------|
| 1 | FA ASS'Y | STUD, SPRING, RETAINER | 2 | A00078 A00080 A00081 |
| 2 | BATTERY CASE | For AXA | 1 | A00251 |
| 3 | SILICON O-RING | For AXA BATTERY CASE | 1 | A00253 |
| 4 | FRONT CASE | For AXA-3 | 1 | A00252 |
| 5 | SILICON O-RING | For AXA BATTERY PCB | 1 | A00254 |
| 6 | PCB ASS'Y | AXA MAIN PCB ASS'Y | 1 | A00255 |
| 7 | PCB ASS'Y | AXA BATTERY PCB ASS'Y | 1 | A00256 |
| 8 | TAPPING SCREW | PH-M3x6 TYPE B | 4 | A00193 |
| 9 | MACHINE SCREW | FH-M2x6 | 8 | A00171 |
| 10 | SILICON O-RING | For AXA FRONT CASE | 1 | A00295 |

| | | | | |
|----|-------------------------|------------------------------|----|------------------|
| 11 | NUMBER DECAL | NUMBER 1-2 SHEET | 1 | A00092 |
| 12 | SPEC PLATE | 78x24x0.5T (LASER ENGRAVING) | 1 | A00257 |
| 13 | RIVET | 2.4x6 | 2 | A00042 |
| 14 | CABLE | For AXA-3 JB PCB (3PI/4P) | 1 | A00258 |
| 15 | PAD | For AXA-3 | 1 | A00269 |
| 16 | MACHINE WRENCH SCREW | FH-M3x10 | 2 | A00161 |
| 17 | MACHINE WRENCH SCREW | SH-M3x15 | 10 | A00172 |
| 18 | PCB ASS'Y | AP0005A | 1 | A00148 |
| 19 | SILICON O-RING | For JB COVER | 1 | A00148 |
| 20 | JB COVER | 181x96x2T | 1 | A00104 |
| 21 | MACHINE SCREW | TH-M4x10 | 8 | A00162 |
| 22 | MACHINE WRENCH SCREW | FH-M5x12 (LOCKTITE) | 20 | A00298 |
| 23 | SILICON O-RING | S05 | 20 | A00119 |
| 24 | RAMP | For AXA-3 | 2 | A00291 |
| 25 | RAMP LINK | For AXA-3 | 4 | A00293 |
| 26 | RAMP PIN | For AXA-3 | 8 | A00108 |
| 27 | SILICON O-RING | For ACPA/ACPA2 | 4 | A00260 |
| 28 | LOAD CELL | ACPA2-0.5T/1T(V2) | 4 | A00261 A00262 |
| 29 | LOAD CELL FOOT | For ACPA2 | 4 | A00267 |
| 30 | FIX RING GUIDE | For ACPA2 2T | 4 | A00301 |

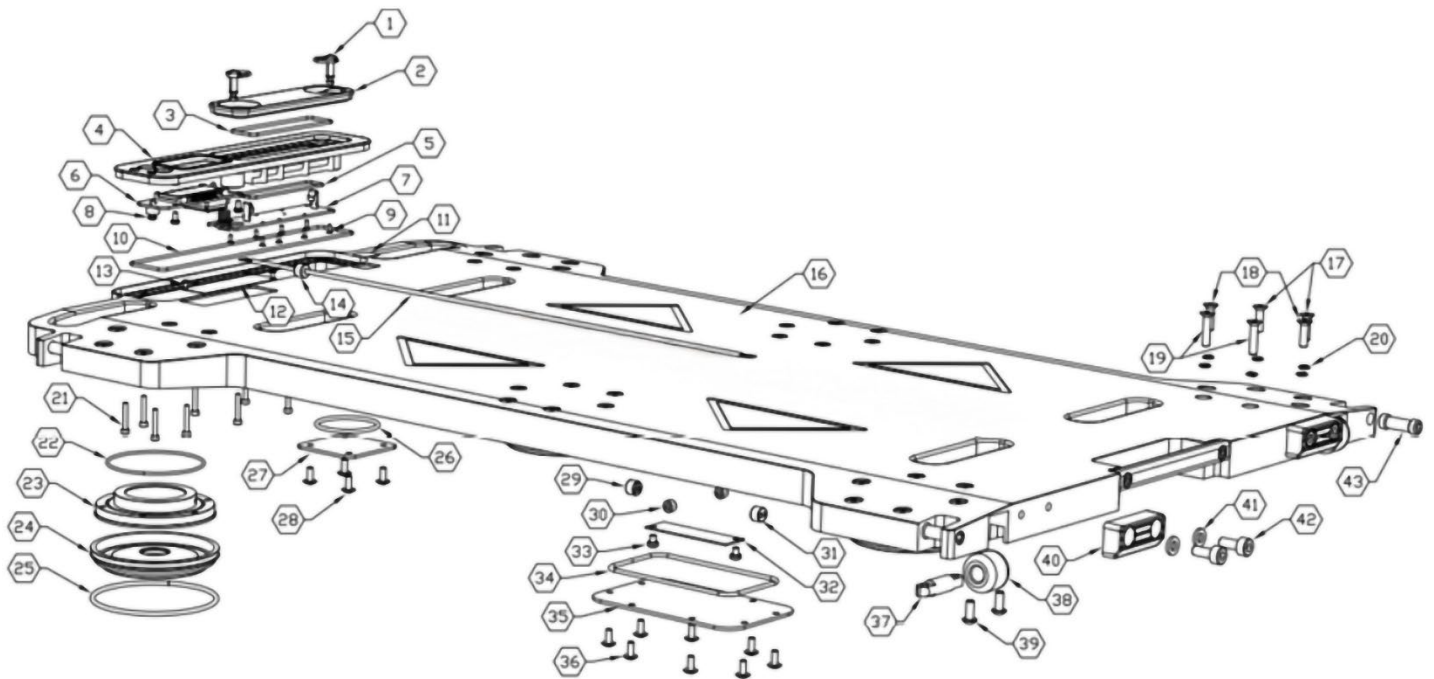
AXA-5



| No | Part Name | Specifications | Q'ty | Code |
|----|----------------|------------------------------|------|----------------------------|
| 1 | FASTENER ASS'Y | STUD. SPRING, RETAINER | 2 | A00078 A00080 A00081 |
| 2 | BATTERY CASE | For AXA | 1 | A00251 |
| 3 | SILICON O-RING | For AXA BATTERY CASE | 1 | A00253 |
| 4 | FRONT CASE | For AXA-5/8 | 1 | A00247 |
| 5 | SILICON O-RING | For AXA BATTERY PCB | 1 | A00254 |
| 6 | PCB ASS'Y | AXA MAIN PCB ASS'Y | 1 | A00255 |
| 7 | PCB ASS'Y | AXA BATTERY PCB ASS'Y | 1 | A00256 |
| 8 | TAPPING SCREW | PH-M3x6 TYPE B | 4 | A00193 |
| 9 | MACHINE SCREW | FH-M2x6 | 8 | A00171 |
| 10 | SILICON O-RING | For AXA FRONT CASE | 1 | A00295 |
| 11 | NUMBER DECAL | NUMBER 1-2 SHEET | 1 | A00092 |
| 12 | SPEC PLATE | 78x24x0.5T (LASER ENGRAVING) | 1 | A00257 |
| 13 | RIVET | 2.4x6 | 2 | A00042 |
| 14 | PACKING RUBBER | 10.1PI 1HOLE | 1 | A00220 |
| 15 | CABLE | For AXA-5 JB PCB (3PI/4P) | 1 | A00259 |
| 16 | PAD | For AXA-5 | 1 | A00271 |

| | | | | |
|----|----------------------|----------------------------|----|--------|
| 17 | MACHINE WRENCH SCREW | SH-M3x20 | 10 | A00233 |
| 18 | MACHINE WRENCH SCREW | FH-M3x12 | 2 | A00174 |
| 19 | PCB ASS'Y | AP0005A | 1 | A00150 |
| 20 | MACHINE SCREW | PH-M4x5 | 2 | A00110 |
| 21 | PACKING RUBBER | 10.1PI 3HOLE | 1 | A00222 |
| 22 | PACKING RUBBER | 10.1PI 2HOLE | 1 | A00221 |
| 23 | SILICON O-RING | For NEW JB COVER | 1 | A00283 |
| 24 | JB COVER | 132x80x2T | 1 | A00285 |
| 25 | MACHINE SCREW | TH-M4x10 | 8 | A00162 |
| 26 | SILICON O-RING | For HOLE COVER | 2 | A00280 |
| 27 | HOLE COVER | 54x54x2T | 2 | A00105 |
| 28 | MACHINE SCREW | TH-M4x10 | 8 | A00162 |
| 29 | MACHINE WRENCH SCREW | FH-M5x18 CUSTOM (LOCKTITE) | 8 | A00296 |
| 30 | MACHINE WRENCH SCREW | FH-M5x20 (LOCKTITE) | 8 | A00118 |
| 31 | MACHINE WRENCH SCREW | FH-M5x23 CUSTOM (LOCKTITE) | 8 | A00297 |
| 32 | SILICON O-RING | S05 | 24 | A00119 |
| 33 | SILICON O-RING | For ACPA/ACPA2 | 4 | A00260 |
| 34 | LOAD CELL | ACPA-2T (V3) | 4 | A00263 |
| 35 | LOAD CELL FOOT | For ACPA | 4 | A00266 |
| 36 | FIX RING GUIDE | For ACPA | 4 | A00116 |
| 37 | RAMP | For AXA-5 | 2 | A00147 |
| 38 | RAMP LINK | For AXA-5 | 4 | A00109 |
| 39 | RAMP PIN | For AXA-5 | 8 | A00108 |
| 40 | ROLLER | For AXA-5/8 | 2 | A00106 |
| 41 | ROLLER PIN | For AXA-5/8 | 2 | A00107 |
| 42 | MACHINE WRENCH SCREW | RH-M5x12 | 4 | A00111 |
| 43 | STAND RUBBER | For AXA-5/8 | 2 | A00076 |
| 44 | WASHER | M6 | 4 | A00113 |
| 45 | MACHINE WRENCH SCREW | SH-M6x15 | 4 | A00112 |

AXA-8



| No | Part Name | Specifications | Q'ty | Code |
|----|----------------------|------------------------------|------|----------------------------|
| 1 | FASTENER ASS'Y | STUD, SPRING, RETAINER | 2 | A00078 A00080 A00081 |
| 2 | BATTERY CASE | For AXA | 1 | A00251 |
| 3 | SILICON O-RING | For AXA BATTERY CASE | 1 | A00253 |
| 4 | FRONT CASE | For AXA-5/8 | 1 | A00247 |
| 5 | SILICON O-RING | For AXA BATTERY PCB | 1 | A00254 |
| 6 | PCB ASS'Y | AXA MAIN PCB ASS'Y | 1 | A00255 |
| 7 | PCB ASS'Y | AXA BATTERY PCB ASS'Y | 1 | A00256 |
| 8 | TAPPING SCREW | PH-M3x6 TYPE B | 4 | A00193 |
| 9 | MACHINE SCREW | FH-M2x6 | 8 | A00171 |
| 10 | SILICON O-RING | For AXA FRONT CASE | 1 | A00295 |
| 11 | NUMBER DECAL | NUMBER 1-2 SHEET | 1 | A00092 |
| 12 | SPEC PLATE | 78x24x0.5T (LASER ENGRAVING) | 1 | A00257 |
| 13 | RIVET | 2.4x6 | 2 | A00042 |
| 14 | PACKING RUBBER | 10.1PI 1HOLE | 1 | A00220 |
| 15 | CABLE | For AXA-8 JB PCB (3PI/4P) | 1 | A00259 |
| 16 | PAD | For AXA-8 | 1 | A00273 |
| 17 | MACHINE WRENCH SCREW | FH-M5x18 CUSTOM (LOCKTITE) | 12 | A00296 |
| 18 | MACHINE WRENCH SCREW | FH-M5x20 (LOCKTITE) | 12 | A00118 |
| 19 | MACHINE WRENCH SCREW | FH-M5x23 CUSTOM (LOCKTITE) | 12 | A00297 |
| 20 | SILICON O-RING | S05 | 36 | A00119 |

| | | | | |
|----|----------------------|------------------|----|--------|
| 21 | MACHINE WRENCH SCREW | SH-M3x20 | 12 | A00233 |
| 22 | SILICON O-RING | For ACPA/ACPA2 | 6 | A00260 |
| 23 | LOAD CELL | ACPA-3T (V3) | 6 | A00263 |
| 24 | LOAD CELL FOOT | For ACPA | 6 | A00266 |
| 25 | FIX RING GUIDE | For ACPA 3T | 6 | A00116 |
| 26 | SILICON O-RING | For HOLE COVER | 2 | A00280 |
| 27 | HOLE COVER | 54x54x2T | 2 | A00105 |
| 28 | MACHINE SCREW | TH-M4x10 | 8 | A00162 |
| 29 | PACKAGING RUBBER | 10.PI 3HOLE | 1 | A00222 |
| 30 | PACKAGING RUBBER | 8.1PI 1HOLE | 2 | A00219 |
| 31 | PACKAGING RUBBER | 10.1PI 2HOLE | 1 | A00221 |
| 32 | PCB ASS'Y | AP0005A | 1 | A00150 |
| 33 | MACHINE SCREW | PH-M4x5 | 2 | A00110 |
| 34 | SILICON O-RING | For NEW JB COVER | 1 | A00283 |
| 35 | JB COVER | 132x80x2T | 1 | A00285 |
| 36 | MACHINE SCREW | TH-M4x10 | 8 | A00162 |
| 37 | ROLLER PIN | For AXA-5/8 | 2 | A00107 |
| 38 | ROLLER | For AXA-5/8 | 2 | A00106 |
| 39 | MACHINE WRENCH SCREW | RH-M5x12 | 4 | A00111 |
| 40 | STAND RUBBER | For AXA-5/8 | 2 | A00076 |
| 41 | WASHER | M6 | 4 | A00113 |
| 42 | MACHINE WRENCH SCREW | SH-M6x15 | 4 | A00112 |
| 43 | MACHINE SET SCREW | M10x30 CUSTOM | 2 | A00310 |

Please Contact Our Authorized Dealer for Technical Assistance:

Notes:

V1.0.0
PN-260101

1-855-269-5623
www.anyload.com



© 2026 Anyload Weigh & Measure Inc.
Specifications subject to change without notice.

ANYLOAD®