

ANYLOAD[®]

AXA

Axle Weigh Pads



IP68

Ingress Protection

600 hrs

Continuous Use

WIM

Weigh in Motion (AXA-8)

1-855-269-5623
www.anyload.com

PN-250601-F

AXA Features

Powder-Coated

Powder-coated aluminum chassis is portable and heavy duty. Hammertone finish provides additional tire traction.

Polymer Ramps

Honeycomb/ribbed design for wheel traction and maximal strength-to-weight performance. Durable industrial polyurethane. Swivel folds for compact stowage and easy deployment and servicing. Swappable to dummy pads during weigh-in-motion use (AXA-8).

IP68 Waterproof

Industry-leading ingress protection rating of IP68 (NEMA 6P) enables outdoor use in harsh outdoor conditions.

Integrated Handles

Integrated handles on both sides of the scale pad for convenient handling and positioning.

600 Hour Battery

Standard 18650 li-ion battery housed in waterproof cover delivers 600 hours continuous use battery life. Rechargeable by USB-C, replaceable without tools, and upgradeable to low-temperature cells (down to -40C°/-40F°).

Ease of Alignment

Hi-Vis safety orange paint for visibility with engraved arrow markings for precise wheel alignment.

LCD Screen

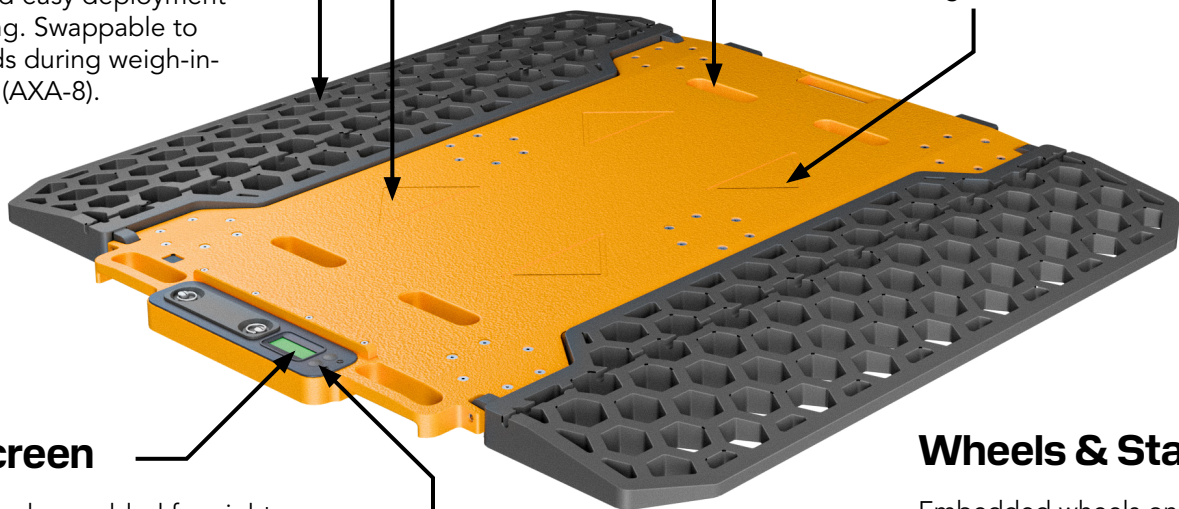
Backlight can be enabled for night-time use with adjustable brightness. Screen is recessed to protect from wheel rollover damage. Displays measured values, stability, unit of measure, wireless connection, battery life.

Capacitive Switches

Raised capacitive touch switches allow power on/off, zeroing, and backlight functionality without compromising water resistance.

Wheels & Stands

Embedded wheels on the bottom of the scale allow for easier transport. Rubber stands provide protection and convenience when the scale is handled vertically.

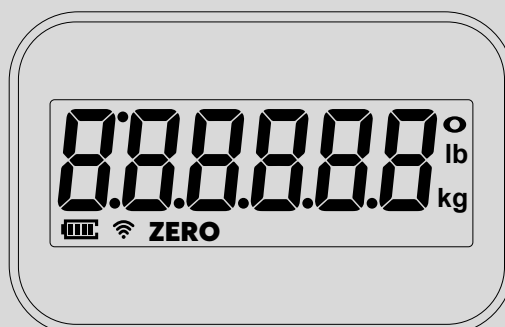


Onboard Interface

Indications for battery life, connection strength to indicator, measurement value 0, WIM activation, unit of measure.

Two capacitance switches for:

- Power (ON/OFF) & Firmware Version
- ZERO & Backlight Adjustment
- Feature settings including brightness, automatic zero condition, unit switching, peak mode, wireless connection



AXA Selection



AXA-3

0.5 - 2 ton / 1,000 - 4,000lb (Per Axle)

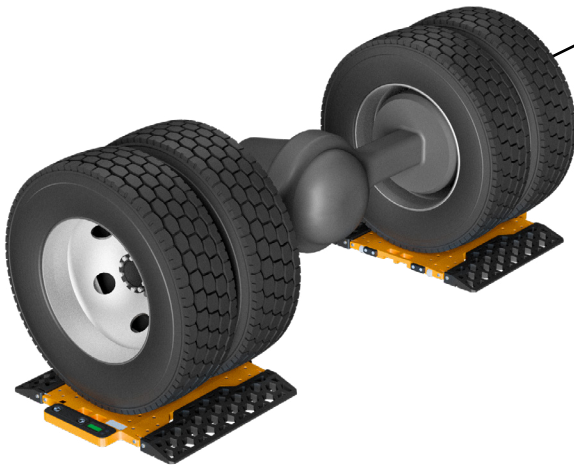
Vehicle Types: Passenger cars, minivans, compact pickups

Trailer Types: Utility trailers, single-axle caravans/campers, small boat trailers

Aircraft Types: Light aircraft, training planes, flight school fleets, piston twins

Static Weighing Accuracy: $\pm 0.1\% \sim \pm 0.3\%$

**Single Axle or up to 8 Axles at once*



AXA-5

3 - 5 ton / 6,000 - 11,000lb (Per Axle)

Vehicle Types: 1-ton pickups, service trucks, race cars, light-duty commercial vans

Trailer Types: Race trailers, fifth-wheel campers, dual-axle caravans

Aircraft Types: Regional aircraft tugs, light business jets, small helicopters

Static Weighing Accuracy: $\pm 0.1\% \sim \pm 0.3\%$

**Single Axle or up to 8 Axles at once*



AXA-8

10 - 20 ton / 22,000 - 44,000lb (Per Axle)

Weigh-In-Motion (WIM)

Enabling dynamic weight measurement for enforcement screening, fleet logistics, and in-motion compliance applications.

W-I-M Accuracy: $\pm 0.2\% \sim \pm 0.6\%$ (WIM is Single Axle)

** Paired with AN560 indicator & dummy pads*

Vehicle Types: Dump trucks, concrete mixers, semi-trucks, off-road & construction vehicles

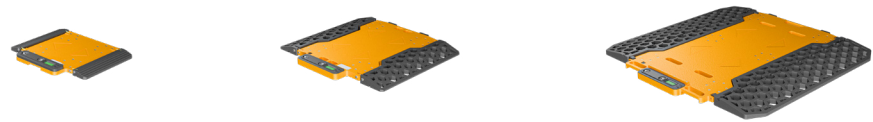
Trailer Types: Flatbeds, enclosed cargo trailers, gooseneck equipment haulers

Aircraft Types: Regional jets, commuter airliners, cargo loaders, fuel trucks

Static Weighing Accuracy: $\pm 0.1\% \sim \pm 0.3\%$

**Static is Single Axle or up to 8 Axles at once*

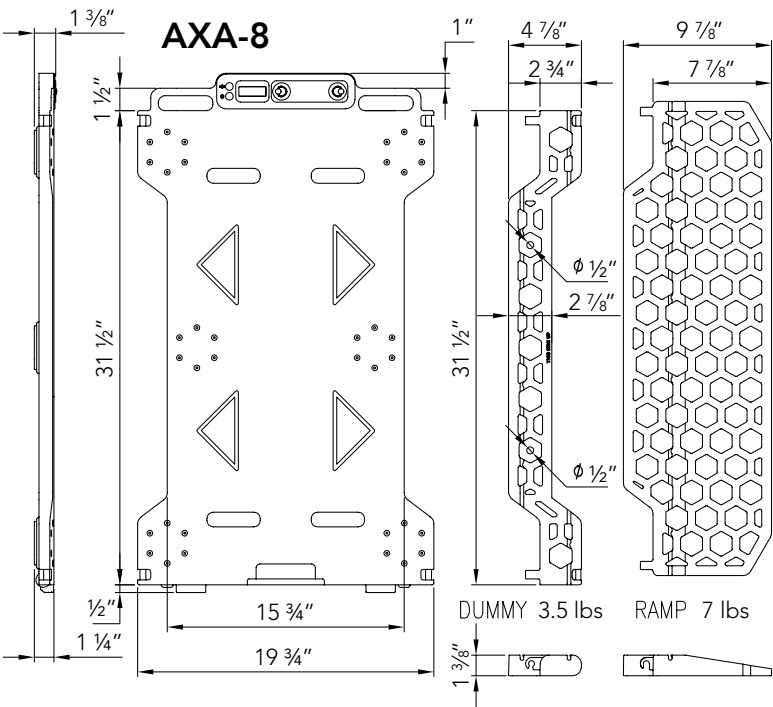
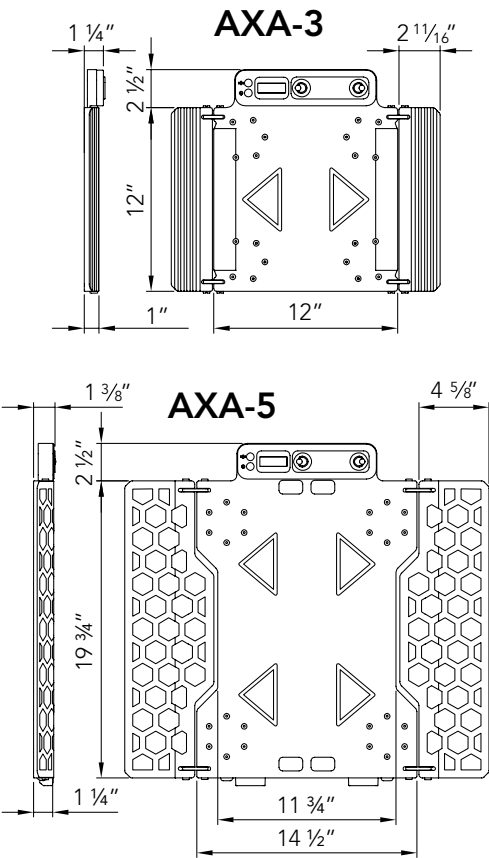
Specifications Table



Specifications	AXA-3			AXA-5		AXA-8		
Capacity (ton/lb)	0.5t	1t	2t	3t	5t	10t	15t	20t
	1Klb	2Klb	4Klb	6Klb	11Klb	22Klb	33Klb	44Klb
Division (kg/lb)	0.2kg	0.5kg	1kg	1kg	2kg	10kg	10kg	10kg
	0.5lb	1lb	2lb	2lb	5lb	20lb	20lb	20lb
Product Weight (Approx.)	6kg / 13lb			16kg / 35lb		19kg / 42lb		
	Including Ramp Weight					Excluding Ramp Weight		
Platform Size (mm/in)	305 x 305 / 12" x 12"			500 x 370 / 19 ^{3/4} " x 14 ^{1/2} "		800 x 500 / 31 ^{1/2} " x 19 ^{3/4} "		
Platform Height (mm/in)	24.5 / 1"			33 / 1 ^{3/8} "				
WIM Speed	n/a			n/a		10kph / 6mph or less		
WIM Accuracy	n/a			n/a		±0.2%~±0.6%		
Shared Specifications								
Static Accuracy	±0.1%~±0.3%							
Transmission Range	Indoor: 30m / 100ft Outdoor: 300m / 1000 ft							
Ramp (Dummy) Material	Urethane							
Ramp Cover Material	Polycarbonate							
Body Material	Aluminum, Hammer-Tone Powder Coating							
Ingress Protection	IP68 (NEMA 6P)							
Operating Temperature	-20°C~60°C / -4°F~140°F							
Operating Humidity	85% R.H. (No Condensation)							
Wireless Transmission	Zigbee with 128-bit AES Encryption							
Operating Time	600 hrs (Continuous Usage)							
Battery & Charger	Rechargeable 18650 Li-Ion + PCM with Standard Battery Charger							
Display	6 Digit FSTN LCD (Height 11mm / 1/2in) & LED Backlight							
Operating Switch	2 Capacitance Touch Switches							
Safe Overload	150% FS							

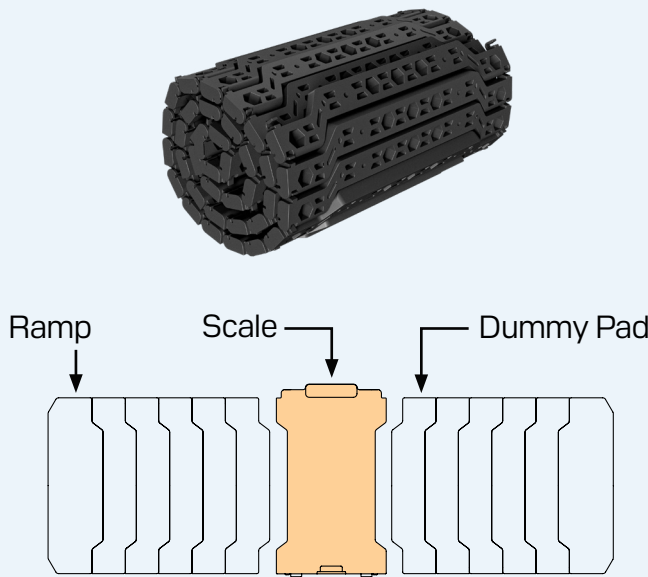
Disclaimer: Imperial (lb/in) measurements are rounded to the nearest practical value when converted from metric (kg/mm).

Dimensions



Accessories

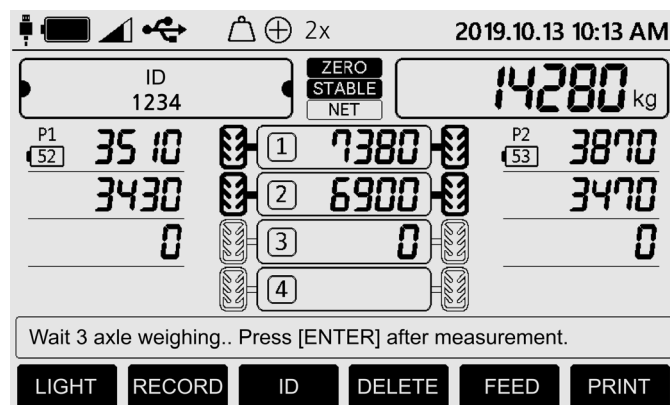
Roll Up Dummy Pad (AXA-8 Only)



Transport Case



AN560 Wireless Indicator



Specifications	AN560
Data Export	USB Flash, USB Virtual COM
Number of Scales	Up to 8
Memory	99,999 Axles / 1000 Trucks
Ingress Protection	IP67
Battery Type	USB Rechargeable
Battery Life	600hrs Continuous Usage
Size (mm/inch)	292 x 248 x 121 / 11½" x 9¾" x 4¾"
Product Weight	3kg / 6lb
Display	E-Ink 4.2"
Rugged Hard-Shell Case <div data-bbox="128 1742 409 2009" data-label="Image"> </div> <p>Built for portable use in harsh environments including roadside sites, construction zones, and aviation ramps.</p>	

Key Features

- E-Ink Display with Backlight**
 Ultra-readable in direct sunlight and at night. The non-backlit panel minimizes glare and eye strain during extended outdoor use.
- Built-in Thermal Printer**
 Generate instant records and receipts of axle weights, overload alerts, and vehicle summaries.
- 24 Key Tactile Keypad**
 Includes navigation, numeric entry, and hotkeys for zeroing, printing, and vehicle ID input.
- Balancing Mode for Multi-Pad Systems**
 Use with up to eight pads to evaluate weight distribution. Ideal for race teams, transport safety checks, and mobile inspections.
- Vehicle Classification & Record Management**
 Define and recall preset axle layouts. Search stored weighments by date, vehicle ID, serial number, or overload status.
- Ultra-Portable (3 kg)**
 Can be held by one hand while the other operates the indicator.

Additional Options

We support a range of additional configurations and custom solutions beyond the standard options listed.

For qualified government and fleet customers, we can assist with certification support, transportation-specific adaptations (e.g., MIL-STD or aviation compatibility), transportation cases, and specialized capacities for higher precision or extended load ranges.

Wired Weigh Pad & Indicator

Direct wired connection between up to 8 axle scale pads per AN650 indicator.

Wireless-Only Weigh Pad System

Enhanced battery life and reduced risk of accidental damage to the weigh pad by eliminating display and keypad on the weigh pad.

Extended Battery Version

Achieve up to 1000 hours of continuous operation with the extended battery option. Note: this version must be recharged wirelessly with a special charger.

Please note that such requests may be subject to varying minimum order quantities, lead times, and pricing depending on the scope and requirements. We are committed to working closely with institutional buyers to ensure a solution that meets both operational demands and regulatory standards.

Notes:

Sold By:

ANYLOAD®

1-855-269-5623
www.anyload.com



1-855-269-5623
www.anyload.com

