

GENERAL INFORMATION

CONTACT DETAILS

Company:	<input type="text"/>	Industry:	<input type="text"/>
Full Name:	<input type="text"/>	Email:	<input type="text"/>
Phone:	<input type="text"/>		

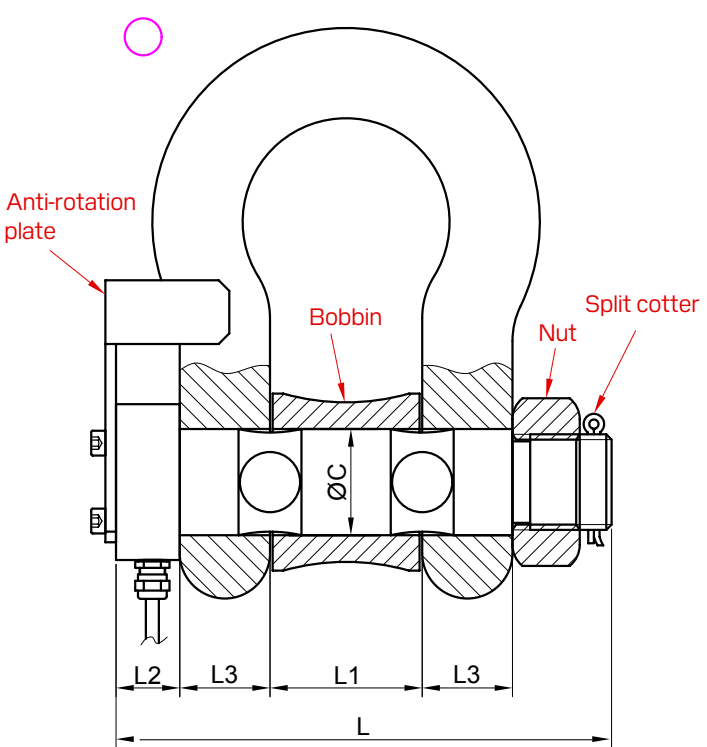
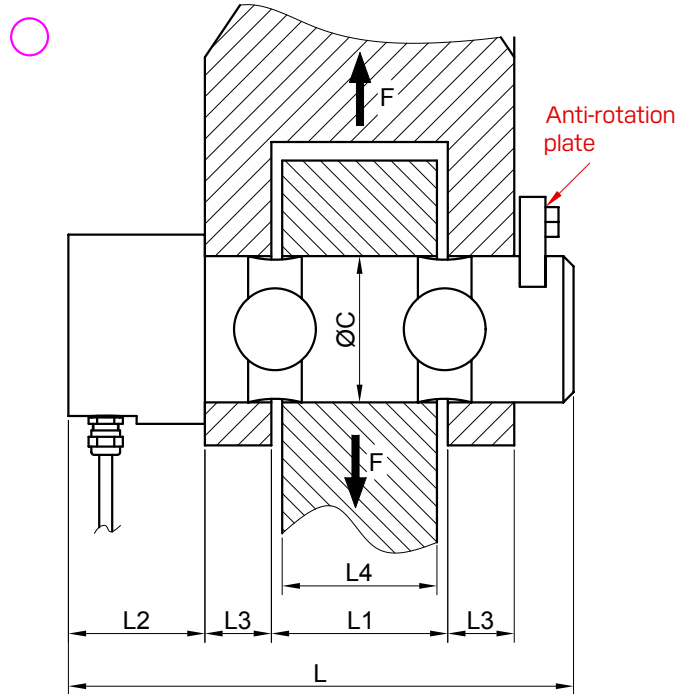
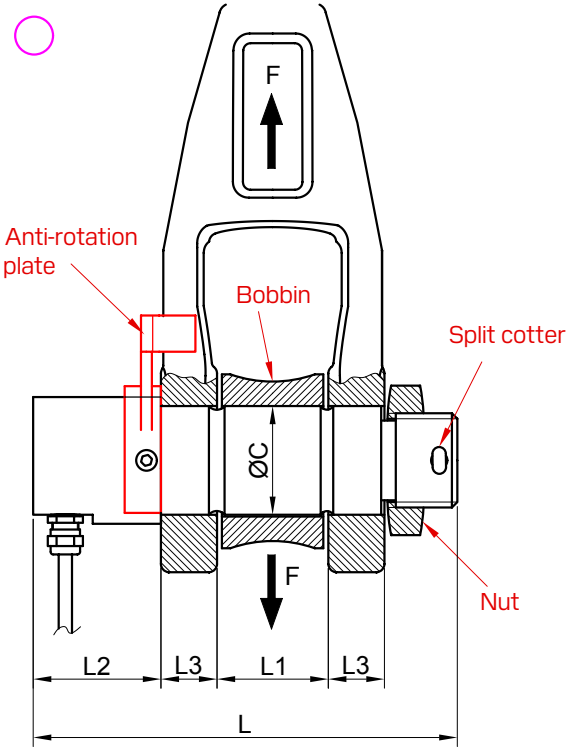
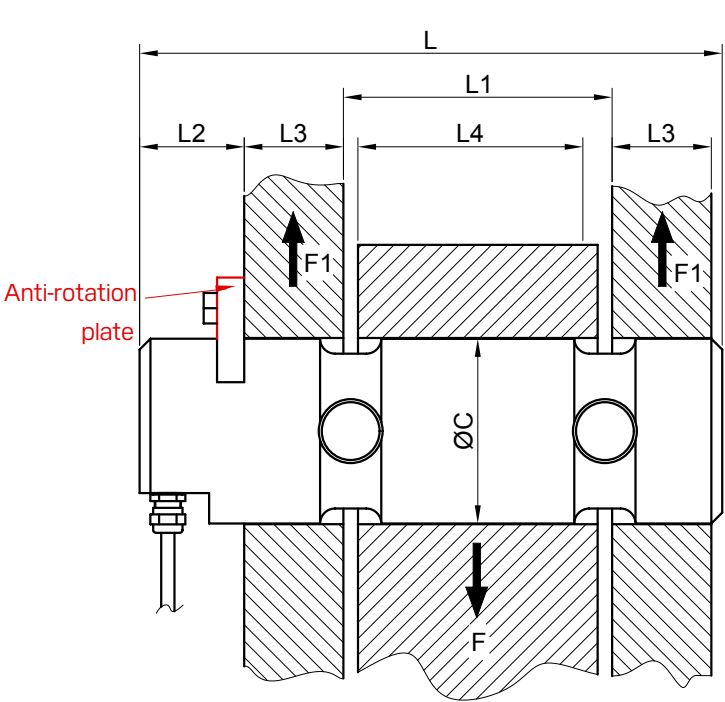
LOCATION DETAILS

Address:	<input type="text"/>	City:	<input type="text"/>
State:	<input type="text"/>	Postal/ZIP Code:	<input type="text"/>
Country:	<input type="text"/>		

ORDER INFORMATION

Quantity:	<input type="text"/>
-----------	----------------------

LOAD PIN TYPE

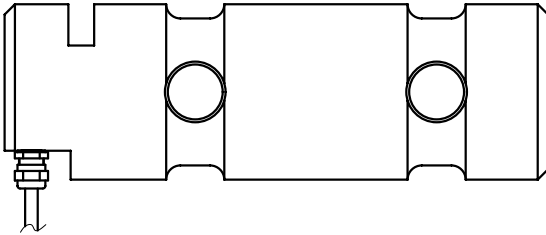


Dimensions (mm/inch)

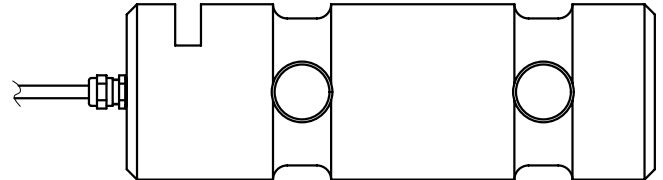
	C	L	L1	L2	L3	L4
mm						
inch						

CABLE & CONNECTOR TYPE

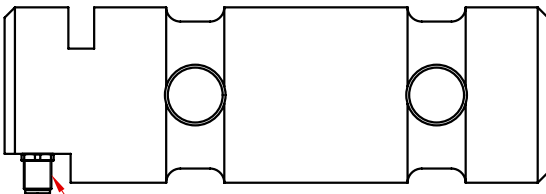
☐ Radial Cable Exit



☐ Axial Cable Exit

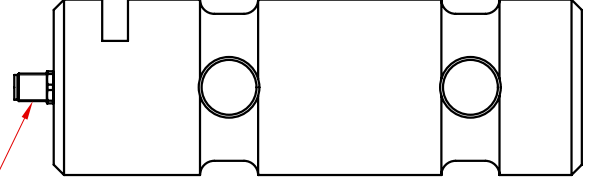


☐ Radial Connector Exit



Male M12X1

☐ Axial Connector Exit



Male M12X1

INSTRUMENTATION

INSTRUMENTATION REQUIRED: YES NO

SELECT TYPE IF NEEDED:



Handheld



Desktop



DIN Rail



Amplifier



Panel Mount

SPECIFICATIONS

Rated Capacity:

Safe Overload: % FS (default)

Breaking Overload: % FS (default)

Total Error: ☐ Standard $\leq 1\%FS$

Operation Temp: Standard -20°C ~ 50°C (-4°F ~ 122°F)

Material:

IP Rating: ☐ IP64 ☐ IP66 ☐ IP67 ☐ IP68 ☐ IP69K

Explosion Protection: FM IECEx ATEX Not Required

**For the class explosion protection, please visit <https://www.anyload.com/approvals/fm/>*

Cable Length:

Output Signal (Digital or Analog):

Digital
RS232 (Modbus RTU)
RS485 (Modbus RTU)
CANBus (CAN Open)
CAN J1939

Analog
mV/V (default)
4~20mA
0~10VDC
0~5VDC
-5~5VDC

**If the pin is bi-directional output please send the info to our team*

COMMENTS

(Describe the application and any other special requirements)