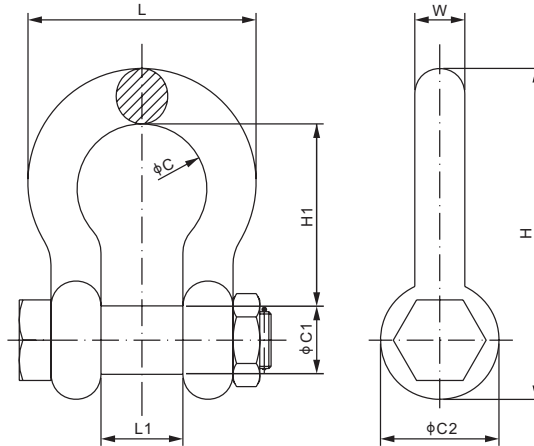


Shackle, Alloy Steel



Features:

- ASME B30.26-2015(R2020) approval by the American Society of Mechanical Engineers
- Work capacity from 2t to 1250t
- Test load: 200% rated capacity
- Breaking load: 400% rated capacity



DIMENSIONS

PART NUMBER	C	C1	C2	H	H1	L	L1	W	Safe Working Load	Shipping Weight
mm										
SBX-2t	33	16	30	84	48	59	20.5	13	2t	0.32kg
SBX-3.25t	42.9	19.1	38.1	106	60.5	74.5	26.9	16	3.25t	0.65kg
SBX-4.75t	51	22.4	46	126	71.5	89	31.8	19.1	4.75t	1.02kg
SBX-6.5t	58	25.4	53	148	84	102	36.6	22.4	6.5t	1.62kg
SBX-9.5t	74	31.8	68.5	190	108	131	46	28.7	9.5t	3.75kg
SBX-12t	82.6	35.1	76.2	210	119	146	52	31.8	12t	4.62kg
SBX-13.5t	92	38.1	84	233	133	162	57	35.1	13.5t	6.38kg
SBX-17t	98.5	41.4	92	254	146	175	60.5	38.1	17t	9.43kg
SBX-25t	127	51	106	313	178	225	73	44.5	25t	13.16kg
SBX-35t	146	57	122	348	197	253	82.5	51	35t	23.70kg
SBX-55t	184	70	145	453	267	327	105	66.5	55t	44.57kg
SBX-85t	200	82.5	165	546	330	365	127	76	85t	69.85kg
SBX-120t	229	95.5	203	626	372	419	133	92	120t	120.2kg
SBX-150t	254	108	229	653	368	468	140	104	150t	153.32kg
SBX-200t	280	130	270	837	396	520	184	115	200t	237kg
SBX-300t	300	150	320	958	450	573	200	130	300t	363kg
SBX-500t	360	185	390	1192	557.5	706	240	165	500t	684kg
SBX-800t	440	240	493	1462	660	874	300	207	800t	1313kg
SBX-1000t	560	270	556	1698	780.5	1064	390	240	1000t	2024kg
SBX-1250t	560	300	620	1856	850	1106	400	260	1250t	2511kg
inches (conversion of above dimensions)										
SBX-2t	1.30	0.63	1.18	3.31	1.89	2.32	0.81	0.51	4.4Klb	0.71lb
SBX-3.25t	1.69	0.75	1.5	4.17	2.38	2.93	1.06	0.63	7.17Klb	1.43lb
SBX-4.75t	2.01	0.88	1.81	4.96	2.81	3.5	1.5	0.75	10.47Klb	2.25lb
SBX-6.5t	2.28	1	2.09	5.83	3.31	4.02	1.44	0.88	14.33Klb	3.57lb
SBX-9.5t	2.91	1.25	2.7	7.48	4.25	5.16	1.8	1.13	20.94Klb	8.27lb
SBX-12t	3.25	1.38	3.0	8.27	4.69	5.75	2.05	1.25	26.46Klb	10.19lb
SBX-13.5t	3.62	1.5	3.31	9.17	5.24	6.38	2.24	1.38	29.76Klb	14.07lb
SBX-17t	3.88	1.63	3.62	10	5.75	6.89	2.38	1.5	37.48Klb	20.79lb
SBX-25t	5	2.01	4.17	12.32	7.01	8.86	2.87	1.75	55.12Klb	29.01lb
SBX-35t	5.75	2.24	4.8	13.7	7.76	9.96	3.25	2.01	77.16Klb	52.25lb
SBX-55t	7.24	2.76	5.71	17.83	10.51	12.87	4.13	2.62	121.25Klb	98.26lb
SBX-85t	7.87	3.25	6.5	21.5	12.99	14.37	5	2.99	187.39Klb	153.99lb
SBX-120t	9.02	3.76	7.99	24.65	14.65	16.5	5.24	3.62	264.55Klb	265.0lb
SBX-150t	10	4.25	9.02	25.71	14.49	18.43	5.51	4.09	330.69Klb	338.01lb
SBX-200t	11.02	5.12	10.63	32.95	15.60	20.47	7.24	4.53	440.9Klb	522.5lb
SBX-300t	11.81	5.91	12.60	37.72	17.72	22.56	7.87	5.12	661.4Klb	800.3lb
SBX-500t	14.71	7.28	15.35	46.93	21.95	28.93	9.45	6.50	1102.3Klb	1508lb
SBX-800t	17.32	9.45	19.41	57.55	25.98	34.41	11.81	8.15	1763.7Klb	2894.7lb
SBX-1000t	22.05	10.63	21.89	65.85	30.73	41.89	15.35	9.45	2204.6Klb	4462.2lb
SBX-1250t	22.05	11.81	24.41	73.07	33.46	43.54	15.75	10.23	2755.8Klb	5535.8lb

Remark: L1 has a tolerance of +/-2mm for L1≤43mm, +/-3mm for 46mm≤L1≤60.5mm, +/-4mm for 73mm≤L1≤82.5mm, and +/-5mm for 105mm≤L1≤140mm

Product Datasheet Disclaimer

Information Changes:

All product specifications, statements, information, and data (collectively, the "Information") in this catalog or made available elsewhere by ANYLOAD are subject to change. Customers must verify the applicability of the Information at the time of order placement.

Accuracy and Reliability:

While all Information is believed to be accurate and reliable, it is presented without guarantee, warranty, or responsibility of any kind, expressed or implied.

Laboratory Conditions:

Data listed in the datasheet is produced within controlled laboratory settings and may not be reproducible without exact replication of all metrological conditions. Users must validate that a product with the described properties is suitable for their applications.

Interchangeability:

Statements of interchangeability with other manufacturers are based on ANYLOAD's knowledge at the time of publication and are not intended to constitute any warranty concerning the substitutability of an ANYLOAD product with one made by another Manufacturer.

Warranty Voidance:

Any use of the product outside of specifications or any storage or installation inconsistent with product guidance voids any warranty.

Intended Use:

The information is intended for use only by customers who have the requisite experience and capability to determine the correct products for their application. ANYLOAD provides technical advice without obligation or liability for the advice given or results obtained.

Component Failures:

Although ANYLOAD designs and manufactures its products to stringent quality and safety standards, isolated component failures may still occur. Applications requiring high reliability or safety should employ suitable designs or safeguards to ensure that component failure does not result in personal injury or property damage.

High-Risk Applications:

Unless specifically agreed to in writing, ANYLOAD has not tested or certified its products, services, or deliverables for use in high-risk applications (e.g., medical life support, nuclear facilities, weapon systems). ANYLOAD makes no assurances that the products are suitable for high-risk uses. Under no circumstances does ANYLOAD warrant or guarantee suitability for any customer design or manufacturing process.

Contact authorized ANYLOAD personnel for special terms and conditions regarding products designed for specific safety requirements.

Safety Measures:

All product-related warnings, cautions, and notes must be observed. Customers should not assume that all safety measures are indicated or that other measures may not be required.

California Proposition 65:

 **WARNING:** Some products manufactured or distributed by ANYLOAD may contain trace amounts of chemicals known to the State of California to cause cancer, birth defects, or other reproductive harm. These substances are present in minimal quantities and are typically encapsulated within our products. This warning is provided to enable you to make informed decisions as a consumer.