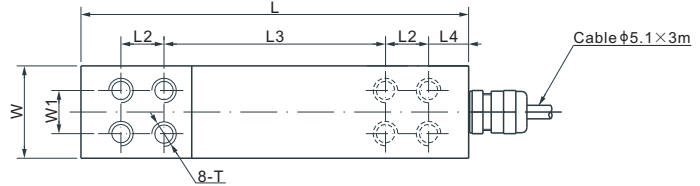
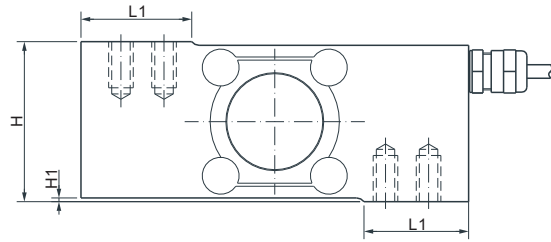


651KS66

Stainless Steel



DIMENSIONS

RATED CAPACITY	H	H1	L	L1	L2	L3	L4	W	W1	T
kg/mm										
LE10-LE200	48.0	1.2	122.0	36.0	15.2	67.8	16.3	30.0	15.2	M6 Depth15
lb/inches (conversion of above dimensions)										
LE22.05-LE440.92	1.89	0.05	4.80	1.42	0.60	2.67	0.64	1.18	0.60	M6 Depth0.59

SPECIFICATIONS

Full Scale Output	2.0 mV/V ± 5%	Recommended Excitation	10V (15V Maximum)
Zero Balance	± 0.02 mV/V	Reference Max. Platform Size	610×700 mm
Non-linearity	< ± 0.03%	Insulation Resistance	>2 [50V DC] GΩ
Repeatability	< ± 0.02%	Compensated Temperature Range	-10°C to 50°C / 14°F to 122°F
Hysteresis Error	< ± 0.03%	Safe Overload	150% of full scale
Creep in 30 min.	< ± 0.02%	Breaking Overload	300% of full scale
Input Resistance	1100Ω ± 50	Seal Type / IP Rating	Welded Seal / IP68/IP69K
Output Resistance	960Ω ± 50	Cable Color Code	Exc+ Red Exc- Black Sig+ Green Sig- White Shield Bare
Element Material	17-4PH Stainless Steel		

PART NUMBER*

Rated Capacity	Part No.	Weight Approx. (kg)
LE10kg.....	651KS66-LE10kg.....	1.32
LE20kg.....	651KS66-LE20kg.....	1.32
LE50kg.....	651KS66-LE50kg.....	1.32
LE100kg.....	651KS66-LE100kg.....	1.32
LE200kg.....	651KS66-LE200kg.....	1.32

* ATEX, FM, IECEx approved versions carry the "-Ex" suffix.

10kg - 50kg: NTEP 1:10 000 Class III, Single Cell;
100kg - 200kg: NTEP 1:5 000 Class III, Single Cell;

10kg - 100kg: OIML MAA C9, Y=18 000;
200kg: OIML MAA C4, Y=26 000

For further available P/N's & specifications per NTEP/OIML classes, please contact us.

INTERCHANGEABLE REFERENCE

Brand	Model
Flintec.....	PC6

AVAILABLE OPTIONS

- Imperial thread 1/4-20 UNC available