

# 563YSMT



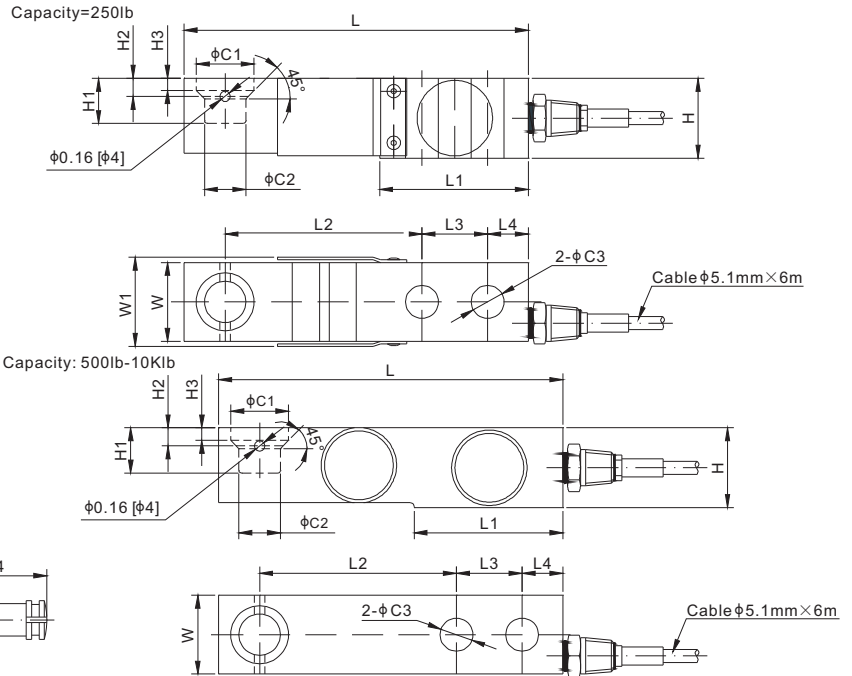
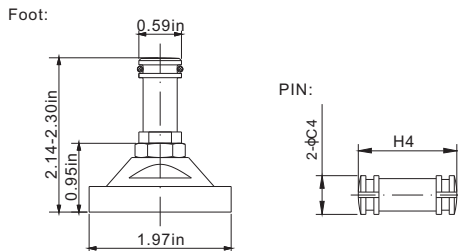
## Stainless Steel



SINGLE ENDED BEAMS



Foot or PIN to be ordered separately.



### DIMENSIONS

RATED CAPACITY	C1	C2	C3	C4	H	H1	H2	H3	H4	L	L1	L2	L3	L4	W	W1
<b>lb/inches</b>																
250	0.88	0.63	0.50	0.59	1.22	0.69	0.28	0.19	1.5	5.25	2.27	3.00	1.00	0.62	1.20	1.38
500-4,000	0.88	0.63	0.50	0.59	1.22	0.69	0.28	0.19	1.5	5.25	2.27	3.00	1.00	0.62	1.20	-
5,000	0.88	0.63	0.50	0.59	1.40	0.92	0.47	0.38	1.5	5.38	2.28	3.00	1.00	0.62	1.46	-
10,000	1.38	0.88	0.75	-	1.68	1.17	0.59	0.46	-	6.87	3.34	3.75	1.50	0.75	1.68	-
<b>kg/mm</b> (conversion of above dimensions)																
113.4	22.4	16.0	12.7	15.0	30.9	17.5	7.0	4.8	38.1	133.3	57.6	76.2	25.4	15.8	30.5	35.0
226.8-1,814.4	22.4	16.0	12.7	15.0	30.9	17.5	7.0	4.8	38.1	133.3	57.6	76.2	25.4	15.8	30.5	-
2,268.0	22.4	16.0	12.7	15.0	35.5	23.4	11.9	9.7	38.1	136.7	57.9	76.2	25.4	15.8	37.1	-
4,535.9	35.1	22.4	19.1	-	42.6	29.7	15.0	11.8	-	174.5	84.8	95.3	38.1	19.1	42.7	-

### SPECIFICATIONS

<b>Full Scale Output</b>	2.0 mV/V ± 0.25%	<b>Recommended Excitation</b>	10V (15V Maximum)
<b>Zero Balance</b>	± 0.02 mV/V	<b>Insulation Resistance</b>	>2 [ 50V DC ] GΩ
<b>Non-linearity</b>	< ± 0.023%	<b>Compensated Temperature Range</b>	-10°C to 50°C / 14°F to 122°F
<b>Repeatability</b>	< ± 0.017%	<b>Safe Overload</b>	150% of full scale
<b>Hysteresis Error</b>	< ± 0.023%	<b>Breaking Overload</b>	300% of full scale
<b>Creep in 30 min.</b>	< ± 0.023%	<b>Seal Type / IP Rating</b>	Cap. = 250lb: Environmentally Sealed / IP66 Cap. ≥ 500lb: Welded Seal / IP68
<b>Input Resistance</b>	350Ω ± 7	<b>Cable Color Code</b>	Exc+ Red    Exc- Black Sig+ Green    Sig- White    Shield Bare
<b>Output Resistance</b>	350Ω ± 3		
<b>Element Material</b>	17-4PH Stainless Steel		

### PART NUMBER\*

Load Cell	Rated Capacity	Part No.	Weight Approx. (kg)
250lb	563YSMT-250lb	1.0	
500lb	563YSMT-500lb	1.0	
1.25Klb	563YSMT-1.25Klb	1.0	
2.5Klb	563YSMT-2.5Klb	1.0	
4Klb	563YSMT-4Klb	1.0	
5Klb	563YSMT-5Klb	1.3	
10Klb	563YSMT-10Klb	2.0	

Hardware	Load Cell Capacity	Part No.	Shipping Weight (kg)
Pin	500lb-5Klb	563YSMT-(0.5-5)Klb-PIN	0.1
Foot	250lb-5Klb	AMFS4-H-50	0.2

\* ATEX, FM, IECEx approved versions carry the "-Ex" suffix.

### INTERCHANGEABLE REFERENCE

Brand	Model
Coti Global	CG-745
HBM	THC
Mettler-Toledo	MT0744*
Mettler-Toledo	MT0745A
Rice Lake	RL30745

\* MT0744 is environmentally sealed and interchangeable with ANYLOAD 563YSMT-250lb

250lb-2.5Klb: NTEP 1:5 000 Class III, Single Cell;  
NTEP 1:9 500 Class III, Multiple Cell  
4Klb-10Klb: NTEP 1:6 000 Class III, Single Cell;  
NTEP 1:10 000 Class III, Multiple Cell

1.25Klb-5Klb: OIML MAA C5, Y=26 000;  
10Klb: OIML MAA C6, Y=8 500

For further available P/N's & specifications per NTEP/OIML classes, please contact us.

www.anyload.com

© 2024 ANYLOAD V2 dimensions and specifications subject to change without notice