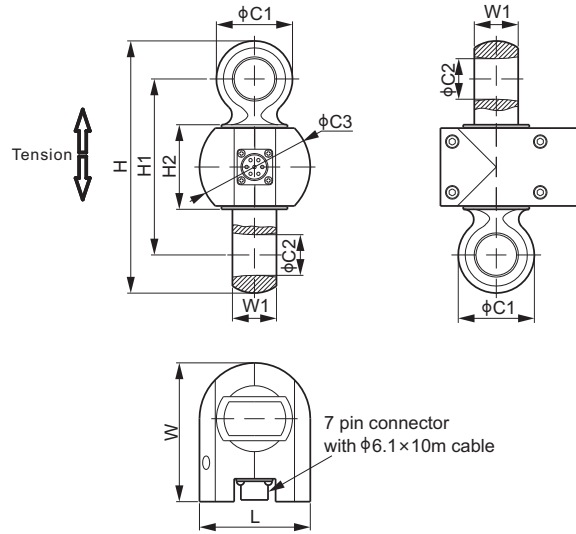


110RH; 110RH-ST



Alloy Steel; Patent Design



TENSION LINKS



DIMENSIONS

RATED CAPACITY	C1	C2	C3	H	H1	H2	L	W	W1	SUGGESTED SHACKLE
110RH:										
t/mm										
0.5; 1; 2	30.0	14.0	43.0	102.0	68.0	38.0	43.0	63.0	15.0	TBX-2t
3	32.0	18.0	55.0	119.0	80.0	39.0	55.0	83.0	18.0	TBX-3.25t
5	45.0	24.0	66.0	153.0	104.0	50.0	66.0	82.0	26.0	TBX-5t
10	60.0	33.0	73.0	195.0	125.0	50.0	73.0	90.5	40.0	TBX-12.5t
20	75.0	41.0	82.0	225.0	145.0	53.0	82.0	110.0	53.0	TBX-21t
30	87.0	44.0	92.0	248.0	150.0	50.0	92.0	125.0	58.0	Crosby G-2140-30t or TBX-30t
50	115.0	62.0	130.0	331.0	206.0	74.0	130.0	159.5	79.0	Crosby G-2140-55t or TBX-50t
100	170.0	88.0	-	442.0	260.0	65.0	176.0	213.0	122.0	Crosby G-2140-120t or TBX-110t
lb/inches (conversion of above dimensions)										
1,102.3; 2,205.1; 4,409.2	1.18	0.55	1.69	4.02	2.68	1.50	1.69	2.48	0.59	TBX-2t
6,613.9	1.26	0.71	2.17	4.69	3.15	1.54	2.17	3.27	0.71	TBX-3.25t
11,023.1	1.77	0.94	2.60	6.02	4.09	1.97	2.60	3.23	1.02	TBX-5t
22,046.2	2.36	1.30	2.87	7.68	4.92	1.97	2.87	3.56	1.57	TBX-12.5t
44,092.5	2.95	1.61	3.23	8.86	5.71	2.09	3.23	4.33	2.09	TBX-21t
66,138.7	3.43	1.73	3.62	9.76	5.91	1.97	3.62	4.92	2.28	Crosby G-2140-30t or TBX-30t
110,231.1	4.53	2.44	5.12	13.03	8.11	2.91	5.12	6.28	3.11	Crosby G-2140-55t or TBX-50t
220,462.3	6.69	3.46	-	17.4	10.24	2.56	6.93	8.39	4.80	Crosby G-2140-120t or TBX-110t
110RH-ST:										
t/mm										
0.5; 1; 2	33.0	18.0	43.0	110.0	74.0	38.0	43.0	63.0	18.0	Crosby G-2130-2t or SBX-2t or TBX-2.5t
3	35.0	21.0	55.0	129.0	88.0	39.0	55.0	83.0	25.0	Crosby G-2130-3.25t or SBX-3.25t
5	50.0	27.0	66.0	164.6	110.6	50.0	66.0	82.0	33.0	Crosby G-2130-6.5t or SBX-6.5t
10	63.0	37.0	73.0	205.0	135.0	50.0	73.0	90.5	41.0	Crosby G-2130-12t or SBX-12t
20	90.0	53.0	82.0	249.0	153.0	53.0	82.0	110.0	66.0	Crosby G-2130-25t or SBX-25t
lb/inches (conversion of above dimensions)										
1,102.3; 2,205.1; 4,409.2	1.30	0.71	1.69	4.33	2.91	1.50	1.69	2.48	0.71	Crosby G-2130-2t or SBX-2t or TBX-2.5t
6,613.9	1.38	0.83	2.17	5.08	3.46	1.54	2.17	3.27	0.98	Crosby G-2130-3.25t or SBX-3.25t
11,023.1	1.97	1.06	2.60	6.48	4.35	1.97	2.60	3.23	1.30	Crosby G-2130-6.5t or SBX-6.5t
22,046.2	2.48	1.46	2.87	8.07	5.31	1.97	2.87	3.56	1.61	Crosby G-2130-12t or SBX-12t
44,092.5	3.54	2.09	3.23	9.80	6.02	2.09	3.23	4.33	2.60	Crosby G-2130-25t or SBX-25t

SPECIFICATIONS			
Full Scale Output	2.0 mV/V \pm 0.25%	Recommended Excitation	10V (15V Maximum)
Zero Balance	\pm 0.02 mV/V	Insulation Resistance	>2 [50V DC] G Ω
Non-linearity	< \pm 0.03%	Compensated Temperature Range	-10°C to 50°C / 14°F to 122°F
Repeatability	< \pm 0.03%	Safe Overload	200% of full scale
Hysteresis Error	< \pm 0.03%	Breaking Overload	500% of full scale
Creep in 30 min.	< \pm 0.03%	Seal Type / IP Rating	Environmentally Sealed / IP67
Input Resistance	1100 Ω \pm 50	Cable Color Code	Exc+ Red Exc- Black
Output Resistance	1000 Ω \pm 10		Sig+ Green Sig- White
Element Material	Alloy Steel, Powder Coating		Sen+ Blue Sen- Yellow
			Shield Bare

PART NUMBER

110RH		
Rated Capacity	Part No.	Self Weight with Cable Approx. (kg)
500kg	110RH-T2-500kg	0.8
1t	110RH-T2-1t	0.8
2t	110RH-T2-2t	0.8
3t	110RH-T2-3t	1.2
5t	110RH-T2-5t	2.1
10t	110RH-T2-10t	2.4
20t	110RH-T2-20t	4.4
30t	110RH-T2-30t	6.4
50t	110RH-T2-50t	13.9
100t	110RH-T2-100t	32.7


PART NUMBER


110RH-ST		
Rated Capacity	Part No.*	Self Weight with Cable Approx. (kg)
500kg	110RH-ST-T2-500kg	1.1
1t	110RH-ST-T2-1t	1.1
2t	110RH-ST-T2-2t	1.1
3t	110RH-ST-T2-3t	1.3
5t	110RH-ST-T2-5t	2.0
10t	110RH-ST-T2-10t	2.5
20t	110RH-ST-T2-20t	4.0

* 110RH-ST-XX match standard Crosby shackles

AVAILABLE OPTIONS

- Input Resistance 400 Ω , Output Resistance 350 Ω , IP65, part number is named as 110RH-xxt or 110RH-ST-xxt
- Input Resistance 1100 Ω , Output Resistance 1000 Ω , IP65, part number is named as 110RH-xxt-T1 or 110RH-ST-xxt-T1

 0.5t-3t: NTEP 1:3 000 Class III, Single Cell;
NTEP 1:5 000 Class III, Multiple Cell;
5t-50t: NTEP 1:3 000, up to 1:6 000 Class III, Single Cell and Multiple Cell

 1t-10t: OIML MAA C3, Y=15 000
10t-50t: OIML MAA C3, up to C6, Y=13 500

For further available P/N's & specifications per NTEP/OIML classes, please contact us.

TENSION LINKS

All product specifications, statements, information and data (collectively, the "Information") in this catalog or made available elsewhere by ANYLOAD are subject to change. The customer is responsible for checking and verifying the extent to which the Information contained in this publication is applicable to an order at the time the order is placed. All Information given herein is believed to be accurate and reliable, but it is presented without guarantee, warranty, or responsibility of any kind, expressed or implied.

Data listed in the datasheet is produced within controlled laboratory settings and may not be reproducible without exact replication of all conditions. It is the customer's responsibility to validate that a particular product with the properties described in the product specifications is suitable for use in their applications. Statements of interchangeability with other manufacturers are based on ANYLOAD's knowledge of product information at the time a publication was made, but are not intended to constitute any warranty concerning the substitutability of an ANYLOAD product with one made by another manufacturer.

Any use of product outside of specifications or any storage or installation inconsistent with product guidance voids and warranty.

The information is intended for use only by customers who have the requisite experience and capability to determine the correct products for their application. Any technical advice inferred from this Information or otherwise provided by ANYLOAD with reference to the use of ANYLOAD's products produces no obligation or liability for the advice given or results obtained.

Although ANYLOAD designs and manufactures its products to the most stringent quality and safety standards, isolated component failures may still occur. Accordingly, customer applications which require a high degree of reliability or safety should employ suitable designs or other safeguards in order to ensure that the failure of an electrical component does not result in a risk of personal injury or property damage.

Unless specifically agreed to in writing, ANYLOAD has not tested or certified its products, services or deliverables for use in high risk applications including medical life support, medical device, direct physical patient contact, water treatment, nuclear facilities, weapon systems, mass and air transportation control, flammable environments, or any other potentially life critical uses. Customer understands and agrees that ANYLOAD makes no assurances that the products, services or deliverables are suitable for any high-risk uses. Under no circumstances does ANYLOAD warrant or guarantee suitability for any customer design or manufacturing process. Although all product - related warnings, cautions and notes must be observed, the customer should not assume that all safety measures are indicated or that other measures may not be required. Please contact authorized ANYLOAD personnel to obtain special terms and conditions regarding products designed for such applications or otherwise satisfy specific safety requirements.