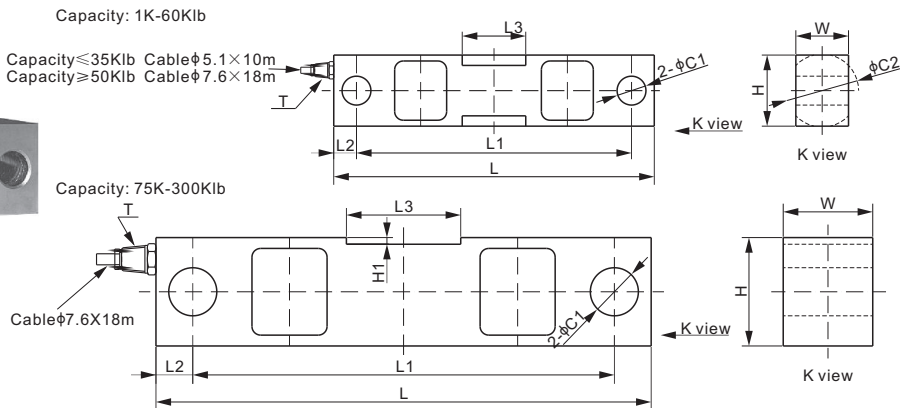


102EH



Alloy Steel



DOUBLE ENDED BEAMS

DIMENSIONS

RATED CAPACITY	C1	C2	H	H1	L	L1	L2	L3	W	T
Klb/inches										
1-5	0.50	1.26	1.26	-	7.50	6.25	0.62	1.22	1.26	1/4-18 NPT
10-25	0.79	1.99	1.94	-	8.74	7.50	0.62	1.73	1.44	1/4-18 NPT
35	0.79	2.50	2.50	-	8.74	7.50	0.62	1.73	1.50	1/4-18 NPT
50-60	1.31	2.99	2.95	-	13.50	11.50	1.00	3.15	2.44	1/2-14 NPT
75	1.31	-	2.95	0.18	13.50	11.50	1.00	3.11	2.44	1/2-14 NPT
100-125	1.63	-	3.94	0.25	18.50	15.00	1.75	3.25	2.94	1/2-14 NPT
200	2.13	-	5.79	0.50	20.50	17.00	1.75	4.13	3.80	1/2-14 NPT
300	2.63	-	5.79	0.50	23.50	18.74	2.38	5.13	3.80	1/2-14 NPT
kg/mm (conversion of above dimensions)										
453.6-2,268	12.7	32.0	32.0	-	190.5	158.8	15.9	31.0	32.0	1/4-18 NPT
4,535.9-11,339.8	20.0	50.5	49.2	-	222.0	190.5	15.8	44.0	36.5	1/4-18 NPT
15,875.7	20.0	63.5	63.5	-	222.0	190.5	15.8	44.0	38.1	1/4-18 NPT
22,679.6-27,215.5	33.3	76.0	75.0	-	343.0	292.0	25.5	80.0	62.0	1/2-14 NPT
34,019.4	33.3	-	75.0	4.6	343.0	292.0	25.5	79.2	62.0	1/2-14 NPT
45,359.2-56,699	41.4	-	100.0	6.4	470.0	381.0	44.5	82.6	74.7	1/2-14 NPT
90,718.5	54.0	-	147.0	12.7	520.7	431.7	44.5	105.0	96.5	1/2-14 NPT
136,077.7	66.8	-	147.0	12.7	597.0	476.0	60.5	130.3	96.5	1/2-14 NPT

SPECIFICATIONS

Full Scale Output	3.0 mV/V ± 0.25%	Recommended Excitation	10V (15V Maximum)
Zero Balance	± 0.02 mV/V	Insulation Resistance	> 2 [50V DC] GΩ
Non-linearity	Cap. ≤ 125Klb: < ± 0.050%; Cap. ≥ 200Klb: < ± 0.1%	Compensated Temperature Range	-10°C to 50°C / 14°F to 122°F
Repeatability	< ± 0.030%	Safe Overload	150% of full scale
Hysteresis Error	Cap. ≤ 125Klb: < ± 0.030%; Cap. ≥ 200Klb: < ± 0.1%	Breaking Overload	300% of full scale
Creep in 30 min.	< ± 0.030%	Seal Type / IP Rating	Environmentally Sealed / IP67
Input Resistance	700Ω ± 10	Cable Color Code	Exc+ Red Exc- Black Sig+ Green Sig- White Shield Bare
Output Resistance	700Ω ± 5		
Element Material	Alloy Steel, Nickel Plated		

PART NUMBER*

Rated Capacity	Part No.	Weight Approx. (kg)
1Klb	102EH-1Klb	1.7
1.5Klb	102EH-1.5Klb	1.7
2.5Klb	102EH-2.5Klb	1.7
5Klb	102EH-5Klb	1.7
10Klb	102EH-10Klb	2.9
15Klb	102EH-15Klb	2.9
20Klb	102EH-20Klb	2.9
25Klb	102EH-25Klb	2.9
35Klb	102EH-35Klb	3.9
50Klb	102EH-50Klb	11.3
60Klb	102EH-60Klb	11.3
75Klb	102EH-75Klb	11.3
100Klb	102EH-100Klb	23.0
125Klb	102EH-125Klb	23.0
200Klb	102EH-200Klb	48.0
300Klb	102EH-300Klb	50.0

WEIGH MODULE

Model	Page
102EHM2	148

INTERCHANGEABLE REFERENCE

Brand	Model
Coti Global	CG-16
Rice Lake	RL75016
Mettler Toledo	SLD425
Vishay Celtron	DSR
Vishay Revere Transducers	5203
Vishay Sensortronics	65016

* ATEX, FM, IECEx approved versions carry the "-Ex" suffix.

All product specifications, statements, information and data (collectively, the "Information") in this catalog or made available elsewhere by ANYLOAD are subject to change. The customer is responsible for checking and verifying the extent to which the Information contained in this publication is applicable to an order at the time the order is placed. All Information given herein is believed to be accurate and reliable, but it is presented without guarantee, warranty, or responsibility of any kind, expressed or implied.

Data listed in the datasheet is produced within controlled laboratory settings and may not be reproduceable without exact replication of all conditions. It is the customer's responsibility to validate that a particular product with the properties described in the product specifications is suitable for use in their applications. Statements of interchangeability with other manufacturers are based on ANYLOAD's knowledge of product information at the time a publication was made, but are not intended to constitute any warranty concerning the substitutability of an ANYLOAD product with one made by another manufacturer.

Any use of product outside of specifications or any storage or installation inconsistent with product guidance voids and warranty.

The information is intended for use only by customers who have the requisite experience and capability to determine the correct products for their application. Any technical advice inferred from this Information or otherwise provided by ANYLOAD with reference to the use of ANYLOAD's products produces no obligation or liability for the advice given or results obtained.

Although ANYLOAD designs and manufactures its products to the most stringent quality and safety standards, isolated component failures may still occur. Accordingly, customer applications which require a high degree of reliability or safety should employ suitable designs or other safeguards in order to ensure that the failure of an electrical component does not result in a risk of personal injury or property damage.

Unless specifically agreed to in writing, ANYLOAD has not tested or certified its products, services or deliverables for use in high risk applications including medical life support, medical device, direct physical patient contact, water treatment, nuclear facilities, weapon systems, mass and air transportation control, flammable environments, or any other potentially life critical uses. Customer understands and agrees that ANYLOAD makes no assurances that the products, services or deliverables are suitable for any high-risk uses. Under no circumstances does ANYLOAD warrant or guarantee suitability for any customer design or manufacturing process. Although all product - related warnings, cautions and notes must be observed, the customer should not assume that all safety measures are indicated or that other measures may not be required. Please contact authorized ANYLOAD personnel to obtain special terms and conditions regarding products designed for such applications or otherwise satisfy specific safety requirements.