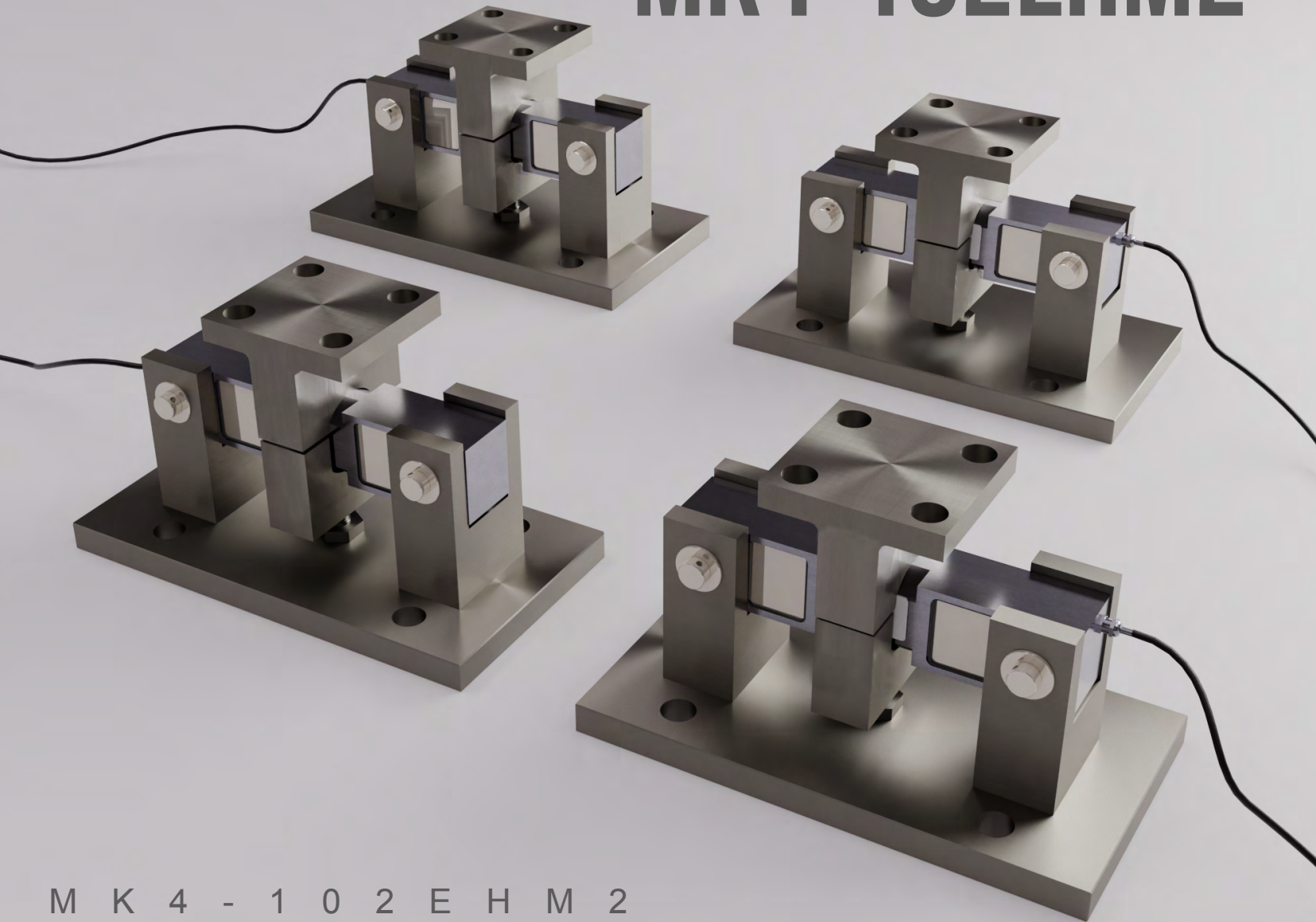


MODEL MK4-102EHM2



M K 4 - 1 0 2 E H M 2

FEATURES:

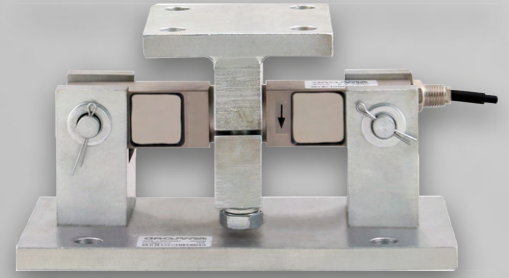
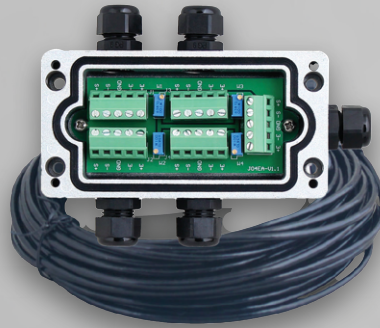
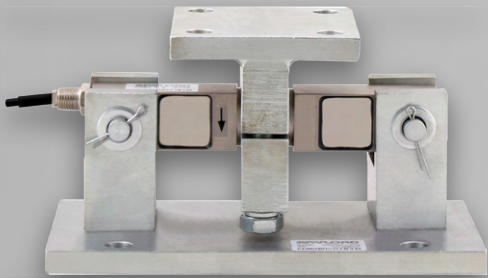
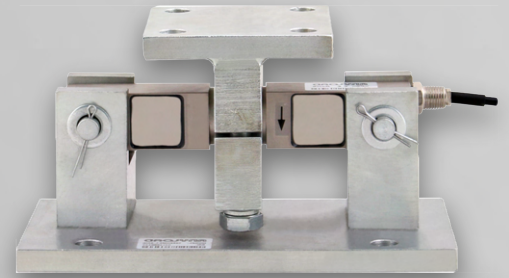
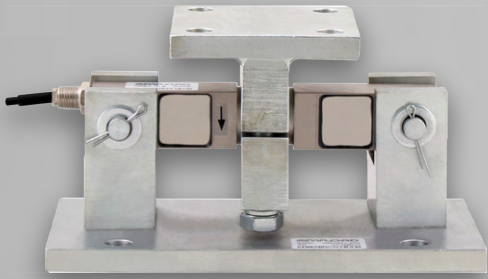
- FM, ATEX, IECEx certified version available
- 50% rated load anti-lifting and side force protection
- Load cell with 150% overload protection
- Stainless and alloy steel versions
- Allowance for thermal expansion
- Junction box equipped with corner trim pots
- Conventional wiring and color code



J04SA-16

MK4-102EHM2

Weigh Module Kit

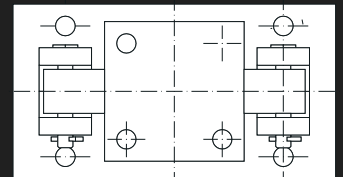
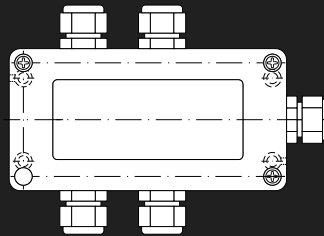
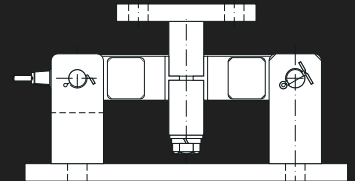
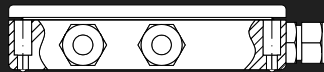


DESCRIPTION:

The MK4-102EHM2 weigh module kit uses four double-ended beam load cells to provide a high degree of durability for your hopper and tank weighing applications. Common applications include medium-to-heavy-capacity bins, hopper, and tank weighing, and other bulk material measurement needs. The kit is a stable weighing solution for medium-to high-capacity ranges. Each kit comes with an IP67 water-resistant junction box and 65ft of cable.

J04EA-16 (INCLUDE IN KIT)

102EHM2



PART NUMBER

Part No.	Load Cell Capacity
MK4-102EHM2-2.5Klb-S.....	2.5Klb.....
MK4-102EHM2-10Klb-S.....	10Klb.....
MK4-102EHM2-35Klb-S.....	35Klb.....
MK4-102EHM2-60Klb-S.....	60Klb.....