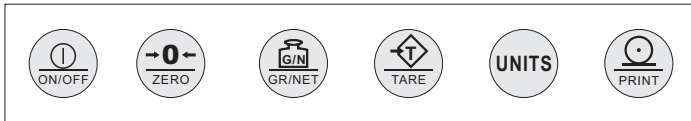


LCD Industrial Weight Indicator



Keyboard Configuration



Features:

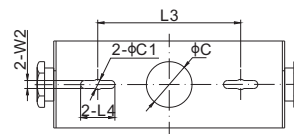
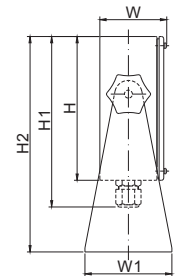
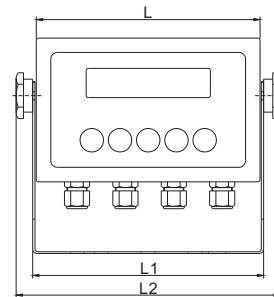
- 6 digits, 7 segments, 1.0", LCD display
- Tri color backlight: green, red and amber
- Indication of up to four units of measurements: kg, lb, oz and g
- Indication of gross, net and tare
- Indication of stability and centre of zero
- Easy wiring plug in screw terminals
- Peak mode, set point, piece counting
- Password protected setup and calibration menu
- Physical and electronic sealing with audit trail function
- Advance analogue, average and digital filtering
- Two independent RS232 communication ports
- UL approved external wall adapter
- Built in lithium battery with internal charger
- Weatherproof stainless steel enclosure, NEMA4X / IP66
- Breather vent to avoid condensation inside

Specifications

Power Supply	AC adaptor, 100VAC to 240VAC, 50-60Hz
	Built-in 10,000mAH internal rechargeable lithium battery
	Max. Power consumption: 5W
Excitation Voltage	5V DC \pm 5%
Number of load cells	Max.: 4x350 Ω ; 8x700 Ω
Input Range	Up to 39mV
Sample Rate	12.5ms or 80Hz
Resolution	1,000,000 internal count, with 24bits resolution
Division	1; 2; 5; 10; 20; 50; 100
Tare range	100% Full Scale
Communicate interface	2 x RS-232C
Working Humidity	20% RH to 90% RH
Working Temperature	-10°C to 50°C / 14°F to 122°F
Dimensions (W x H x D)	9.1" x 7.4" x 3.0" (231 x 188 x 76mm) base included

PART NUMBER

Part No.	Power Supply	Weight (kg) Approx.
815BS-B-21E.....	External.....	2.4



DIMENSIONS

L	7.7in (196mm)	H	4.9in (125mm)	W	2.3in (58mm)
L1	8.0in (202mm)	H1	5.9in (149mm)	W1	3.0in (76mm)
L2	9.1in (231mm)	H2	7.4in (188mm)	W2	0.3in (7mm)
L3	4.9in (125mm)	C	1.6in (40mm)		
L4	1.2in (30mm)	C1	0.4in (9mm)		