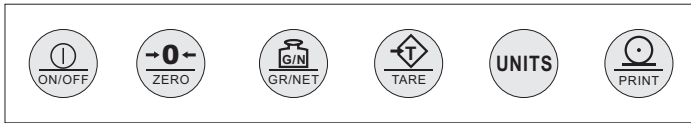


## LCD Industrial Weight Indicator



### Keyboard Configuration



Specifications	
<b>Power Supply</b>	AC adaptor, 100VAC to 240VAC, 50-60Hz Built-in 10,000mAH internal rechargeable lithium battery
<b>Power Consumption</b>	120VAC @ 0.1A / 12VDC @ 0.5A (10W AC / 5W DC) typical
<b>Excitation Voltage</b>	5V DC ± 5%
<b>Number of load cells</b>	Up to 4x350Ω; 8x700Ω
<b>Input Range</b>	Up to 19mV/4mV/V
<b>Sample Rate</b>	80samples/second
<b>Resolution</b>	1,000,000 internal count, with 24bits resolution
<b>Division</b>	legal for trade 10,000d/20,000d
<b>Tare range</b>	100% Full Scale NTEP/MC/OIML
<b>Communicate interface</b>	2 x RS-232C
<b>Working Humidity</b>	20% RH to 90% RH
<b>Working Temperature</b>	-10°C to 50°C / 15°F to 120°F
<b>Dimensions (W x H x D)</b>	9.1" x 7.4" x 3.0" (231 x 196 x 76mm) base included

### PART NUMBER

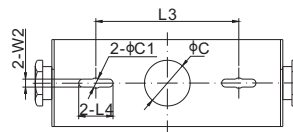
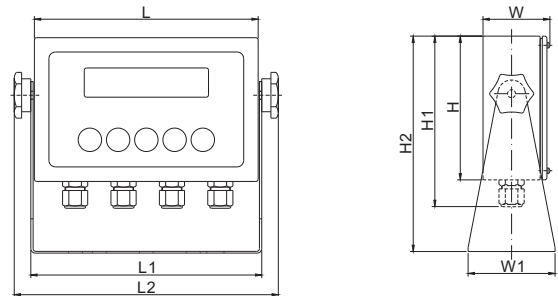
Part No.	Power Supply	Weight (kg) Approx.
815BS-B-21E.....	External.....	2.5

### Features:

- 1.0", 6 digits, 7 segments, LCD display
- Tri color backlight: green, red and amber
- Indication of up to four units of measurements: kg, lb, oz and g
- Indication of gross, net and tare
- Indication of stability and centre of zero
- Easy wiring screw terminals
- Weight, peak, set point, and piece counting
- Password protected setup and calibration menu
- Physical and electronic sealing with audit trail function
- Advance analogue, average and digital filtering
- Two independent RS232 communication ports
- UL approved external wall adapter
- Built in lithium battery with internal charger
- Weatherproof stainless steel enclosure, NEMA4X / IP66
- Breather vent to avoid condensation inside

### Approvals:

- NTEP: Class III/IIIL 10,000d
- Measurement Canada: Class III / IIIHD 10,000d / 20,000d



### DIMENSIONS

L	7.7in (196mm)	H	4.9in (125mm)	W	2.3in (58mm)
L1	8.0in (202mm)	H1	5.9in (149mm)	W1	3.0in (76mm)
L2	9.1in (231mm)	H2	7.4in (188mm)	W2	0.3in (7mm)
L3	4.9in (125mm)	C	1.6in (40mm)		
L4	1.2in (30mm)	C1	0.4in (9mm)		