

# J08SP-E

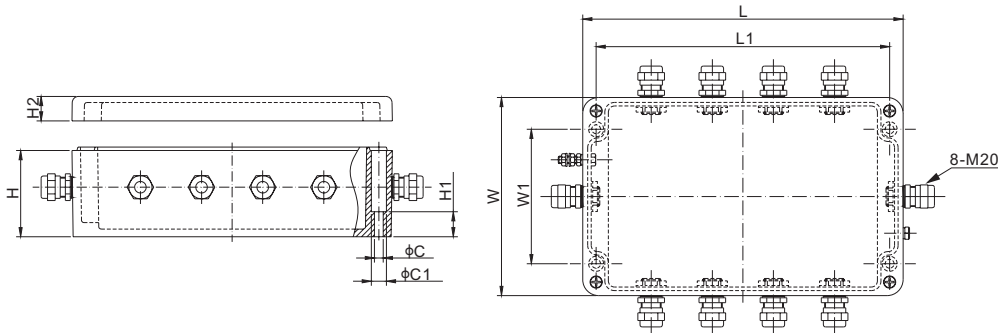


## Fiberglass Reinforced Polyester



### Features:

- Fiberglass reinforced polyester housing
- Quick removable load cell connectors
- Switchable On/Off power per channel
- Section and individual load cell trim pots
- Lightning/Over voltage protection
- Preinstalled GORE breather vent
- Conformal coated circuit board
- Number of load cells: 2-8 single cells
- Expansion port to/for additional J-Box
- IP rating: IP67



### DIMENSIONS

	C	C1	H	H1	H2	L	L1	W	W1
mm	7.2	12.3	70.5	20.5	20	262	240	162	110
inches	0.3	0.5	2.8	0.8	0.8	10.3	9.4	6.4	4.3

### SPECIFICATIONS

Number of Cells	2 - 8 single cells	Trimming	Section or individual cell trim, with signal trim
Input Cable Fittings	M20: 6mm - 12mm diameter cable	Enclosure Material	Fiberglass Reinforced Polyester
Output Cable Fittings	M20: 6mm - 12mm diameter cable	IP Rating	IP67

### TRIMMING RANGE

Load Cell Resistance	Signal Trim
350 Ω	.....3.6% of output
700 Ω	.....6.3% of output
1000 Ω	.....7.0% of output

### PART NUMBER

Trimming	Section Trim	Lightning Protection	Part No.	Weight (kg) Approx.
Signal	.....Yes	.....Yes	J08SP-E-03B	..... 2.5

### MOTHERBOARD LAYOUT

