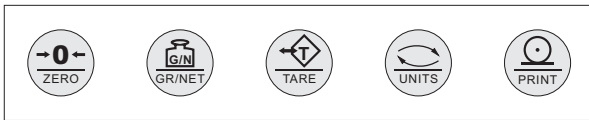


LED Industrial Weight Indicator



Keyboard Configuration



Features:

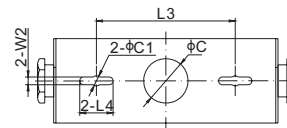
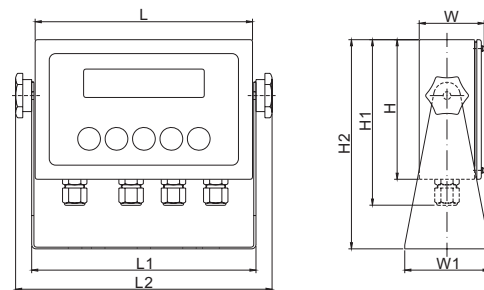
- 6 digits, 7 segments, 0.8", LED weight indicator.
- Indication of four units of kg, lb, oz and g.
- Indication of gross, net and tare.
- Indication of stability and centre of zero.
- Two independent RS232 serial ports for streaming and printing.
- One independent RS485 serial communication port.
- Easy wiring screw terminals.
- Breather vent to avoid condensation inside.
- Password protected calibration menu
- Electronic sealing via audit trail function.
- Weight, peak and piece modes.
- Two set point relays
- Advance analogue, digital and average filtering.
- Main enclosure: Stainless steel NEMA4 / IP65 weather proof

General Specifications	
Enclosure Material	Stainless Steel SS304
Units of Measurement	kg, lb, oz, gr
Working Humidity	20% RH to 90% RH
Working Temperature	-10°C to 40°C / 14°F to 104°F
Dimensions	223 × 76 × 181 (mm)
	8.8 × 3.0 × 7.13 (inch)
Display Type	LED
Display Digits	6 digits
Digit Height	20mm / 0.8in
Display Dimensions	143 × 41 (mm) / 5.6 × 1.6 (inch)
Power Supply	UL approved internal, 110VAC+10%/-15%
	or 220VAC+10%/-15%, 50-60Hz
IP Rating	IP65

Technical Specifications	
Division	1; 2; 5; 10; 20; 50; 100
Tare range	100% Full Scale
Max. Number of load cells	4 × 350Ω; 8 × 700Ω
Max. power consumption	10W
Excitation Voltage	5V DC ± 5%
Internal Counts	1,000,000
Communicate interface	2 × RS-232C, RS-485
Input Range	Up to 39mV
Update Rate	12.5ms or 80Hz
Output	2 x form C Relays

PART NUMBER

Part No.	Transformer	Weight (kg) Approx.
815TS-B-21B.....	Internal.....	2.3



DIMENSIONS

	C	C1	H	H1	H2	L	L1	L2	L3	L4	W	W1	W2
inches	1.6	0.4	4.9	5.9	7.4	7.7	8.0	9.1	4.9	1.2	2.3	3.0	0.3
mm	40	9	126	149	188	196	202	231	125	30	58	76	7