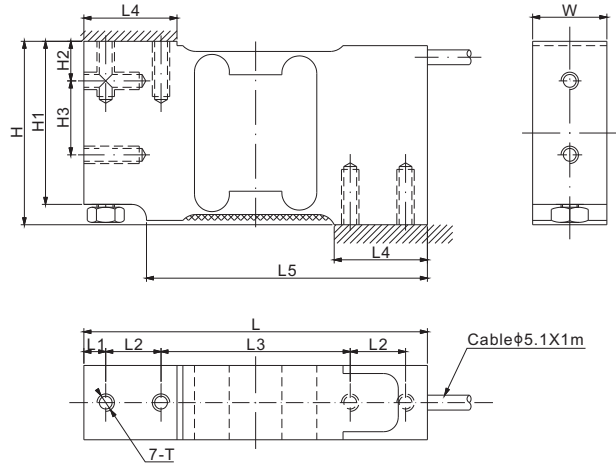
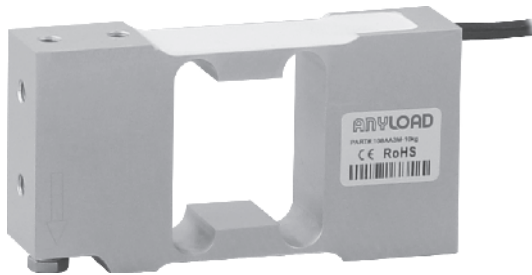


# 108AA3MUN



Aluminum



CE RoHS

## DIMENSIONS

RATED CAPACITY	H	H1	H2	H3	L	L1	L2	L3	L4	L5	W	T
<b>kg/mm</b>												
3-90	63.0	56.0	13.6	25.4	118.0	7.5	19.1	65.0	32.0	96.5	25.5	1/4-20UNC Depth19
<b>lb/inches</b> (conversion of above dimensions)												
6.61-198.42	2.48	2.20	0.54	1.00	4.65	0.30	0.75	2.56	1.26	3.80	1.00	1/4-20UNC Depth19

## SPECIFICATIONS

<b>Full Scale Output</b>	2.0 mV/V ± 0.25%	<b>Recommended Torque</b>	3 to 30kg: 7Nm(62in-lb) 50 and 90kg: 10Nm(90in-lb)
<b>Zero Balance</b>	± 0.02 mV/V	<b>Reference Max. Platform Size</b>	350 × 350 mm
<b>Non-linearity</b>	< ± 0.03%	<b>Insulation Resistance</b>	> 2 [ 50V DC ] GΩ
<b>Repeatability</b>	< ± 0.03%	<b>Nominal Temperature Range</b>	-10°C to 40°C / 14°F to 104°F
<b>Hysteresis Error</b>	< ± 0.03%	<b>Safe Overload</b>	150% of full scale
<b>Creep in 30 min.</b>	< ± 0.03%	<b>Breaking Overload</b>	300% of full scale
<b>Input Resistance</b>	415Ω ± 15	<b>Seal Type / IP Rating</b>	Environmentally Sealed / IP66
<b>Output Resistance</b>	350Ω ± 3	<b>Cable Color Code</b>	Exc+ Green    Exc- Black Sig+ Red      Sig- White    Shield Bare
<b>Element Material</b>	Aluminum		
<b>Recommended Excitation</b>	10V (15V Maximum)		

## PART NUMBER

Rated Capacity	Part No.	Weight (kg) Approx.
3kg.....	108AA3MUN-3kg.....	0.5
5kg.....	108AA3MUN-5kg.....	0.5
10kg.....	108AA3MUN-10kg.....	0.5
15kg.....	108AA3MUN-15kg.....	0.5
20kg.....	108AA3MUN-20kg.....	0.5
30kg.....	108AA3MUN-30kg.....	0.5
50kg.....	108AA3MUN-50kg.....	0.5
90kg.....	108AA3MUN-90kg.....	0.5

## INTERCHANGEABLE REFERENCE

Manufacturer	Model
Vishay Tedeo-Huntleigh.....	1010
Vishay Tedeo-Huntleigh.....	1015

SINGLE POINTS