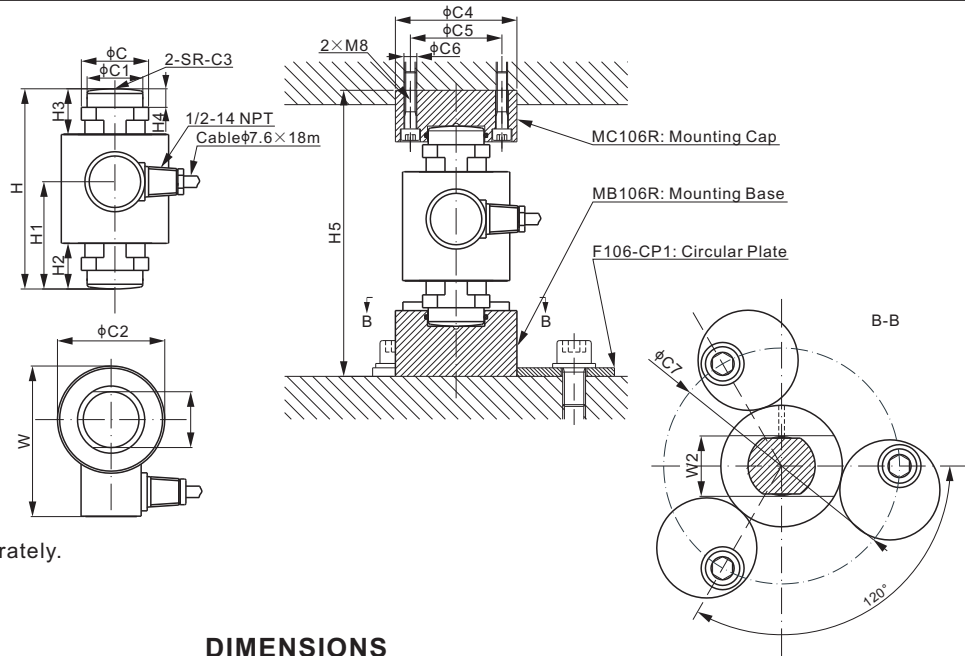


106RS

Stainless Steel



Mounting hardware to be ordered separately.

DIMENSIONS

RATED CAPACITY	C	C1	C2	C3	C4	C5	C6	C7	H	H1	H2	H3	H4	H5	W	W1	W2
t/mm																	
30	45.8	39.0	75.0	120.0	85.0	64.0	9.0	165.0	140.0	75.0	32.0	32.0	13.0	200.0	105.3	39.0	42.4
40	45.8	39.0	75.0	180.0	85.0	64.0	9.0	165.0	150.0	80.0	37.0	37.0	13.0	200.0	106.0	39.0	42.4
50	56.5	44.0	99.0	280.0	90.0	70.0	9.0	170.0	178.0	94.0	34.0	34.0	17.0	240.0	129.0	44.0	47.5
lb/inches (conversion of above dimensions)																	
66,138.7	1.80	1.54	2.99	4.72	3.35	2.52	0.35	6.50	5.51	2.95	1.26	1.26	0.51	7.87	4.15	1.54	1.67
88,184.9	1.80	1.54	2.99	7.09	3.35	2.52	0.35	6.50	5.91	3.15	1.46	1.46	0.51	7.87	4.17	1.54	1.67
110,231.1	2.22	1.73	3.90	11.02	3.55	2.76	0.35	7.70	7.01	3.70	1.34	1.34	0.67	9.46	5.08	1.73	1.87

SPECIFICATIONS

Full Scale Output	2.0 mV/V ± 0.1%	Recommended Excitation	10V (15V Maximum)
Zero Balance	± 0.02 mV/V	Insulation Resistance	> 2 [50V DC] GΩ
Non-linearity	< ± 0.023%	Compensated Temperature Range	-10°C to 50°C / 14°F to 122°F
Repeatability	< ± 0.017%	Safe Overload	150% of full scale
Hysteresis Error	< ± 0.020%	Breaking Overload	300% of full scale
Creep in 30 min.	< ± 0.020%	Seal Type / IP Rating	Welded Seal / IP68
Input Resistance	1150Ω ± 50	Cable Color Code	Exc+ Red Exc- Black Sig+ Green Sig- White Shield Bare
Output Resistance	1000Ω ± 2		
Element Material	2Cr13 Stainless Steel		

PART NUMBER

Load Cell	Rated Capacity	Part No.	Weight (kg) Approx.
	30t.....	106RS-30t-YZ.....	4.2
	40t.....	106RS-40t-YZ.....	3.9
	50t.....	106RS-50t-YZ.....	5.2

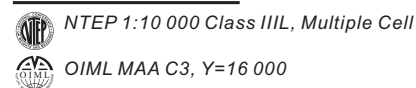
Alloy Steel	Load Cell Capacity	Part No.	Weight (kg) Approx.
Mounting Cap.....	(30-40)t.....	MC106RH-(30-40)t.....	1.4
	50t.....	MC106RH-50t.....	2.0
Mounting Base.....	30t.....	MB106RH-30t.....	2.1
	40t.....	MB106RH-40t.....	1.6
	50t.....	MB106RH-50t.....	2.2
Circular Plate*.....	(30-50)t.....	F106-CP1-H.....	1.2

* When ordering mounting hardware, each load cell needs 1 x cap, 1 x base, 3 x circular plates.

INTERCHANGEABLE REFERENCE

Manufacturer	Model
Coti Global.....	CG-26S6
FAIRBANKS.....	LCF HR4020-2A(30t), part number 70510
FLINTEC.....	RC3

Stainless Steel(2Cr13)	Load Cell Capacity	Part No.	Weight (kg) Approx.
Mounting Cap.....	(30-40)t.....	MC106RS-(30-40)t-YZ..	1.4
	50t.....	MC106RS-50t-YZ.....	2.0
Mounting Base.....	30t.....	MB106RS-30t-YZ.....	2.1
	40t.....	MB106RS-40t-YZ.....	1.6
	50t.....	MB106RS-50t-YZ.....	2.2
Circular Plate*.....	(30-50)t.....	F106-CP1-YZ.....	1.2



www.anyload.com

© 2021 ANYLOAD V3 dimensions and specifications subject to change without notice