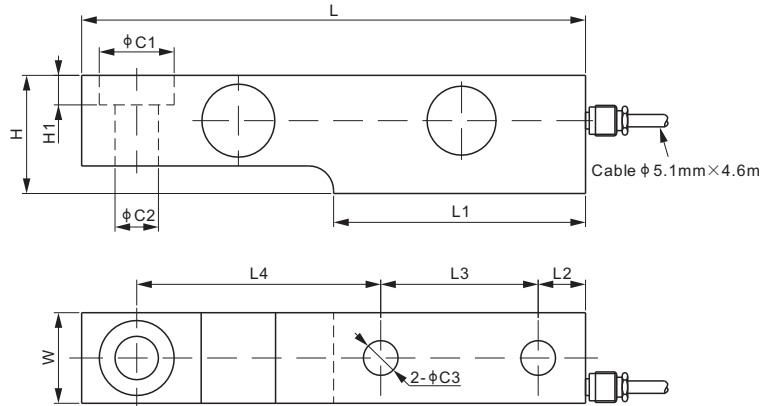


563YSRS



Stainless Steel



SINGLE ENDED BEAMS



DIMENSIONS

RATED CAPACITY	C1	C2	C3	H	H1	L	L1	L2	L3	L4	W
Klb/inches											
1-5	1.19	0.69	0.55	1.87	0.47	8.00	4.00	0.75	2.50	3.87	1.44
kg/mm (conversion of above dimensions)											
454-2,268	30.2	17.5	14.0	47.6	11.9	203.2	101.6	19.1	63.5	98.4	36.5

SPECIFICATIONS

Full Scale Output	2.0 mV/V \pm 1%	Recommended Excitation	10V (15V Maximum)
Zero Balance	\pm 0.02 mV/V	Insulation Resistance	>2 [50V DC] G Ω
Non-linearity	< \pm 0.023%	Compensated Temperature Range	-10°C to 50°C / 14°F to 122°F
Repeatability	< \pm 0.023%	Safe Overload	150% of full scale
Hysteresis Error	< \pm 0.023%	Breaking Overload	300% of full scale
Creep in 30 min.	< \pm 0.030%	Seal Type / IP Rating	Welded Seal / IP68
Input Resistance	350 Ω \pm 7	Cable Color Code	Exc+ Red Exc- Black Sig+ Green Sig- White Shield Bare
Output Resistance	350 Ω \pm 3		
Element Material	17-4PH Stainless Steel		

PART NUMBER

Rated Capacity	Part No.	Weight (kg) Approx.
1Klb	563YSRS-1Klb.....	2.0
2Klb	563YSRS-2Klb.....	2.0
5Klb.....	563YSRS-5Klb.....	2.0

INTERCHANGEABLE PRODUCTS

Manufacturer	Model
Coti Global.....	CG-SB3
HBM.....	SB3
Rice Lake.....	RLSSB
Vishay Revere Transducers.....	SSB

1Klb-2Klb: NTEP 1:5 000 Class III, Single Cell;
 NTEP 1:9 500 Class III, Multiple Cell
 5Klb: NTEP 1:6 000 Class III, Single Cell;
 NTEP 1:10 000 Class III, Multiple Cell
 OIML MAA C5, Y=26 000