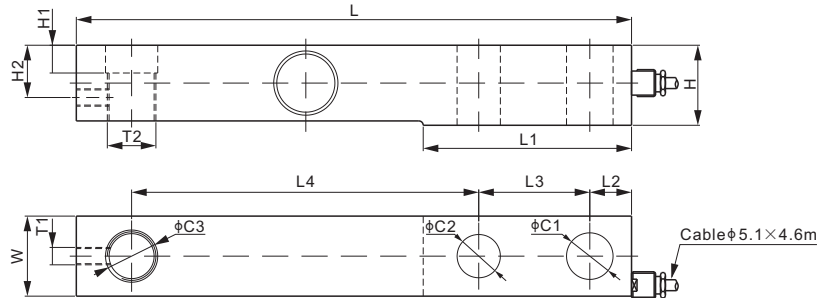


563YSLF

Stainless Steel



SINGLE ENDED BEAMS

CE RoHS

DIMENSIONS

RATED CAPACITY	C1	C2	C3	H	H1	H2	L	L1	L2	L3	L4	W	T1	T2
Klb/inches														
1.5-2.5	0.59	0.53	0.69	1.13	0.56	0.82	9.00	-	0.62	1.75	6.00	1.19	#10-32	5/8-18 UNF
5	0.84	0.78	0.94	1.44	0.50	0.94	10.00	3.75	0.75	2.00	6.25	1.44	#10-32	7/8-14 UNF
kg/mm (conversion of above dimensions)														
680.4-1,134	15.0	13.5	17.5	28.7	14.2	20.8	228.6	-	15.8	44.5	152.4	30.2	#10-32	5/8-18 UNF
2,268	21.3	19.8	23.9	36.6	12.7	23.9	254.0	95.3	19.1	50.8	158.8	36.6	#10-32	7/8-14 UNF

SPECIFICATIONS

Full Scale Output	2.0 mV/V \pm 0.25%	Recommended Excitation	10V (15V Maximum)
Zero Balance	\pm 0.02 mV/V	Insulation Resistance	>2 [50V DC] G Ω
Non-linearity	\leq \pm 0.030%	Compensated Temperature Range	-10°C to 50°C / 14°F to 122°F
Repeatability	\leq \pm 0.023%	Safe Overload	150% of full scale
Hysteresis Error	\leq \pm 0.020%	Breaking Overload	300% of full scale
Creep in 30 min.	\leq \pm 0.030%	Seal Type / IP Rating	Environmentally Sealed / IP67
Input Resistance	1000 Ω \pm 15	Cable Color Code	Exc+ Red Exc- Black
Output Resistance	1000 Ω \pm 5		Sig+ Green Sig- White
Element Material	2Cr13 Stainless Steel		Shield Bare

PART NUMBER

Rated Capacity	Part No.	Weight (kg) Approx.
1.5Klb	563YSLF-1.5Klb-YZ	-
2.5Klb	563YSLF-2.5Klb-YZ	1.7
5Klb	563YSLF-5Klb-YZ	2.5

INTERCHANGEABLE PRODUCTS

Manufacturer	Model
Coti Global	CG-BLF
HBM	BLF
Fairbanks	3-53581-X
Fairbanks	3-52921-1