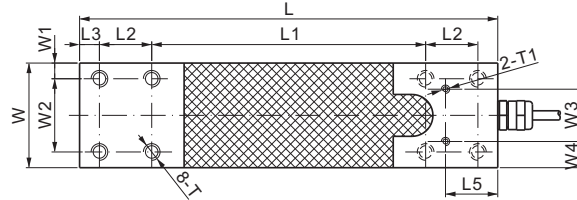
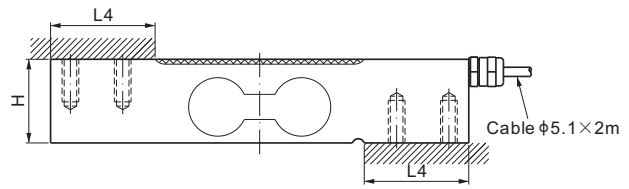
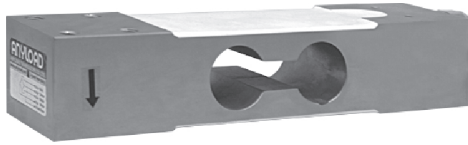


# 108WH



## Alloy Steel



CE RoHS

### DIMENSIONS

RATED CAPACITY	H	L	L1	L2	L3	L4	L5	W	W1	W2	W3	W4	T	T1
<b>kg/mm</b>														
300-1,000	40.0	200.0	131.0	25.0	9.5	50.0	25.0	50.0	7.5	35.0	25.0	12.5	M8 Depth20	M4 Depth5
<b>lb/inches</b> (conversion of above dimensions)														
661.4-2,204.6	1.57	7.87	5.16	0.98	0.37	1.97	0.98	1.97	0.30	1.38	0.98	0.49	M8 Depth0.79	M4 Depth0.20

### SPECIFICATIONS

<b>Full Scale Output</b>	2.0 mV/V $\pm$ 10%	<b>Recommended Excitation</b>	10V (15V Maximum)
<b>Zero Balance</b>	$\pm$ 0.02 mV/V	<b>Reference Max. Platform Size</b>	600 $\times$ 700 mm
<b>Non-linearity</b>	$< \pm$ 0.017%	<b>Insulation Resistance</b>	$> 2 [50V DC] G \Omega$
<b>Repeatability</b>	$< \pm$ 0.017%	<b>Compensated Temperature Range</b>	-10°C to 50°C / 14°F to 122°F
<b>Hysteresis Error</b>	$< \pm$ 0.017%	<b>Safe Overload</b>	150% of full scale
<b>Creep in 30 min.</b>	$< \pm$ 0.023%	<b>Breaking Overload</b>	300% of full scale
<b>Input Resistance</b>	400 $\Omega \pm$ 15	<b>Seal Type / IP Rating</b>	Environmentally Sealed / IP66
<b>Output Resistance</b>	350 $\Omega \pm$ 3	<b>Cable Color Code</b>	Exc+ Red    Exc- Black Sig+ Green    Sig- White    Shield Bare
<b>Element Material</b>	Alloy Steel, Nickel Plated		

### PART NUMBER

Rated Capacity	Part No.	Weight (kg) Approx.
300kg.....	108WH-300kg.....	2.7
400kg.....	108WH-400kg.....	2.7
500kg.....	108WH-500kg.....	2.7
750kg.....	108WH-750kg.....	2.7
1t.....	108WH-1t.....	2.7

SINGLE POINTS