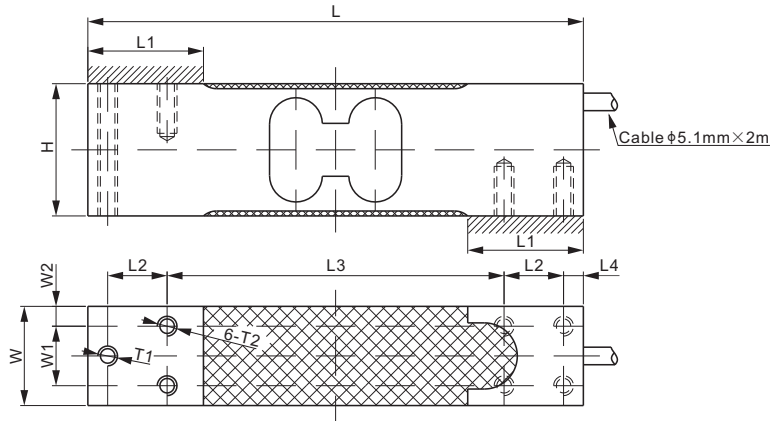
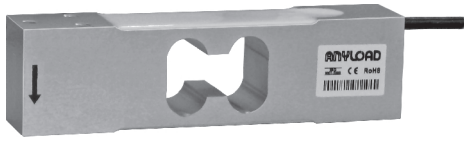


# 108TAAD



## Aluminum



OIML CE RoHS

### DIMENSIONS

RATED CAPACITY	H	L	L1	L2	L3	L4	W	W1	W2	T1	T2
<b>kg/mm</b>											
30-150	40.0	150.0	35.0	18.0	102.0	6.0	30.0	18.0	6.0	M6	M6 Depth 15
<b>lb/inches</b> (conversion of above dimensions)											
66-330	1.57	5.91	1.38	0.71	4.02	0.24	1.18	0.71	0.24	M6	M6 Depth 0.6

### SPECIFICATIONS

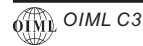
Type	YZ108	Recommended Excitation	10V (15V Maximum)
Full Scale Output	1.0 mV/V $\pm$ 10%	Reference Max. Platform Size	400 $\times$ 400 mm
Zero Balance	$\pm$ 0.02 mV/V	Insulation Resistance	>2 [ 50V DC ] G $\Omega$
Non-linearity	< $\pm$ 0.017%	Nominal Temperature Range	-10°C to 40°C / 14°F to 104°F
Repeatability	< $\pm$ 0.017%	Safe Overload	150% of full scale
Hysteresis Error	< $\pm$ 0.017%	Breaking Overload	300% of full scale
Creep in 30 min.	< $\pm$ 0.023%	Seal Type / IP Rating	Environmentally Sealed / IP66
Input Resistance	415 $\Omega$ $\pm$ 15	Cable Color Code	Exc+ Red    Exc- Black
Output Resistance	350 $\Omega$ $\pm$ 3		Sig+ Green    Sig- White
Element Material	Aluminum		Shield Bare

### PART NUMBER

Rated Capacity	Part No.	Weight (kg) Approx.
30kg.....	108TAAD-30kg.....	0.5
60kg.....	108TAAD-60kg.....	0.5
150kg.....	108TAAD-150kg.....	0.5

### INTERCHANGEABLE PRODUCTS

Manufacturer	Model
A&D.....	LC-4102



SINGLE POINTS