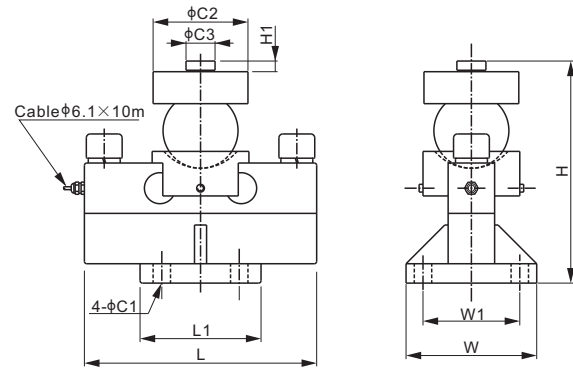


102AH

Alloy Steel



CE RoHS 

Mounting hardware shown in the picture included.

DOUBLE ENDED BEAMS

DIMENSIONS

RATED CAPACITY	C1	C2	C3	H	H1	L	L1	W	W1
t/mm									
5-15	18.0	88.0	30.0	195.0	11.0	240.0	125.0	135.0	100.0
20-30	18.0	88.0	30.0	225.0	11.0	240.0	125.0	135.0	100.0
50	22.0	98.0	40.0	267.0	11.0	340.0	160.0	160.0	124.0
lb/inches (conversion of above dimensions)									
11,023.1-33,069.3	0.71	3.46	1.18	7.68	0.43	9.45	4.92	5.31	3.94
44,092.5-66,138.7	0.71	3.46	1.18	8.87	0.43	9.45	4.92	5.31	3.94
110,231.1	0.87	3.86	1.57	10.52	0.43	13.39	6.30	6.30	4.88

SPECIFICATIONS

Full Scale Output	2.0 mV/V \pm 0.25%	Recommended Excitation	10V (15V Maximum)
Zero Balance	\pm 0.02 mV/V	Insulation Resistance	>2 [50V DC] G Ω
Non-linearity	< \pm 0.023%	Compensated Temperature Range	-10°C to 50°C / 14°F to 122°F
Repeatability	< \pm 0.017%	Safe Overload	150% of full scale
Hysteresis Error	< \pm 0.023%	Breaking Overload	300% of full scale
Creep in 30 min.	< \pm 0.023%	Seal Type / IP Rating	Environmentally Sealed / IP67
Input Resistance	770 Ω \pm 30	Cable Color Code	Exc+ Red Exc- Black
Output Resistance	700 Ω \pm 5		Sig+ Green Sig- White
Element Material	Alloy Steel, Nickel Plated		Shield Bare

PART NUMBER

Rated Capacity	Part No.	Weight (kg) Approx.
5t.....	102AH-5t.....	16.4
10t.....	102AH-10t.....	16.4
15t.....	102AH-15t.....	16.4
20t.....	102AH-20t.....	16.7
25t.....	102AH-25t.....	16.7
30t.....	102AH-30t.....	16.7
50t.....	102AH-50t.....	30.7