

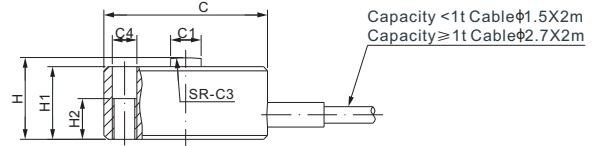
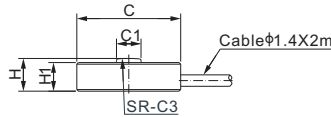
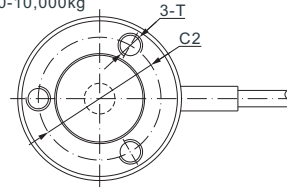
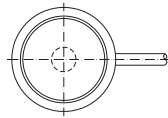
# 247ASLH;247ASLHUN



## Stainless Steel

Capacity: 10-100kg

Capacity: 250-10,000kg



CE RoHS

### DIMENSIONS

RATED CAPACITY	C	C1	C2	C3	C4	H	H1	H2	T
<b>247ASLH:</b>									
<b>kg/mm</b>									
10	9.7	2.3	-	12.7	-	3.6	3.2	-	-
25-100	12.7	3.0	-	19.1	-	4.5	4.0	-	-
250-500	20.0	3.8	15.0	15.0	3.0	10.0	8.9	5.0	M3
1,000-2,000	37.6	10.9	31.8	76.2	3.5	16.0	14.0	6.4	M3
5,000-10,000	50.3	15.2	41.4	200	-	25.4	22.4	-	M4
<b>247ASLHUN:</b>									
<b>kg/mm</b>									
250-500	20.0	3.8	15.0	15.0	3.0	10.0	8.9	5.0	#6-32 UNC-2B
1,000-2,000	37.6	10.9	31.8	76.2	3.5	16.0	14.0	6.4	#6-32 UNC-2B
5,000-10,000	50.3	15.2	41.4	200	-	25.4	22.4	-	#6-32 UNC-2B

### SPECIFICATIONS

<b>Full Scale Output</b>	Cap. ≤10kg: 1.0 mV/V ± 20%; Cap. >10kg: 2.0 mV/V ± 20%	<b>Recommended Excitation</b>	Cap. ≤10kg: 5V (7V Maximum) Cap. >10kg: 10V (15V Maximum)
<b>Zero Balance</b>	Cap. ≤10kg: ± 0.03 mV/V Cap. >10kg: ± 0.04 mV/V	<b>Insulation Resistance</b>	>2 [ 50V DC ] GΩ
<b>Non-linearity</b>	< ± 0.5%	<b>Nominal Temperature Range</b>	-10°C to 40°C / 14°F to 104°F
<b>Repeatability</b>	< ± 0.5%	<b>Safe Overload</b>	150% of full scale
<b>Hysteresis Error</b>	< ± 0.5%	<b>Breaking Overload</b>	300% of full scale
<b>Creep in 30 min.</b>	< ± 0.5%	<b>Seal Type / IP Rating</b>	Environmentally Sealed / IP66
<b>Input Resistance</b>	Cap. ≤500kg: 375Ω ± 25; Cap. >500kg: 700Ω ± 25	<b>Cable Color Code</b>	Cap. ≤500kg: Exc+ Red Exc- Black Sig+ Green Sig- Yellow Shield Bare Cap. >500kg: Exc+ Red Exc- Black Sig+ Green Sig- White Shield Bare
<b>Output Resistance</b>	Cap. ≤500kg: 350Ω ± 3; Cap. >500kg: 700Ω ± 3		
<b>Element Material</b>	17-4PH Stainless Steel		

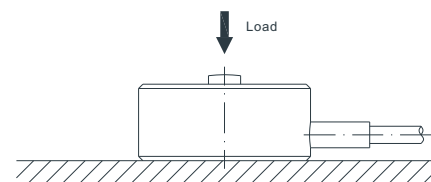
### PART NUMBER

Rated Capacity	Part No.	Weight (kg) Approx.
<b>10-100kg, No thread</b>		
10kg.....	247ASLH-10kg.....	0.09
25kg.....	247ASLH-25kg.....	0.09
50kg.....	247ASLH-50kg.....	0.09
100kg.....	247ASLH-100kg.....	0.09
<b>250kg to 2t, Metric thread</b>		
250kg.....	247ASLH-250kg.....	0.11
500kg.....	247ASLH-500kg.....	0.11
1t.....	247ASLH-1t.....	0.19
2t.....	247ASLH-2t.....	0.19
5t.....	247ASLH-5t.....	0.42
10t.....	247ASLH-10t.....	0.42

### PART NUMBER

Rated Capacity	Part No.	Weight (kg) Approx.
<b>250kg to 2t, Imperial thread</b>		
250kg.....	247ASLHUN-250kg.....	0.11
500kg.....	247ASLHUN-500kg.....	0.11
1t.....	247ASLHUN-1t.....	0.19
2t.....	247ASLHUN-2t.....	0.19
5t.....	247ASLHUN-5t.....	0.42
10t.....	247ASLHUN-10t.....	0.42

### APPLICATION EXAMPLES



LOAD BUTTONS