

Alloy Steel, Load Bar (LB100) with Handheld Indicator (805HP)



Complete Set Includes:

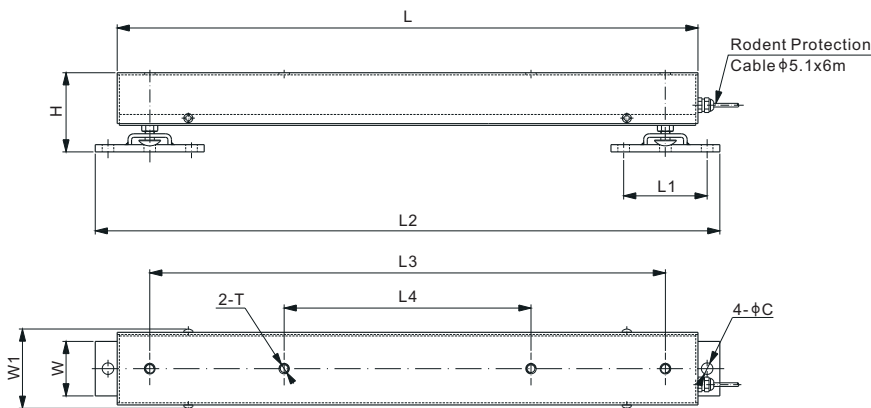
One set of load bar consists of:

- 2 pieces of load bars
- 1 unit of 805HP-03 (with two female connectors for connecting to the cables from the two bars)

Each bar includes:

- 2 units load cells (563YH-2.5Klb for LB100-5Klb)
- 1 junction box (J02EP-17 built-in inside of the bar)
- 1 roll of cable (rodent protection, 6m long, with a male connector for connecting to the hand-held indicator)
- 2 units active mounting feet (special made)

Factory pre-calibrated, ready to use out of box



DIMENSIONS

MODEL NAME(one set)	RATED CAPACITY	H	L	L1	L2	L3	L4	W	W1	C	T
<b>lb/inches</b>											
1,000-10,000	500lb-4,000lb	4.17-4.57	31.50	4.53	33.86	27.95	13.39	2.95	4.33	0.63	1/2-20 Depth0.87
<b>kg/mm</b>											
100-2,000	200kg-4,000kg	106.0-116.0	800.0	115.0	860.0	710.0	340.0	75.0	110	16.0	1/2-20 Depth22

PART NUMBER			
One Set Capacity	Load Cell Capacity	Part No.	Shipping Weight (kg) Approx.
5Klb.....2.5Klb.....		LB100-5Klb-01-FP1.....	35.7

Note: for detailed information about 805HP-03, check the date sheet of 805HP