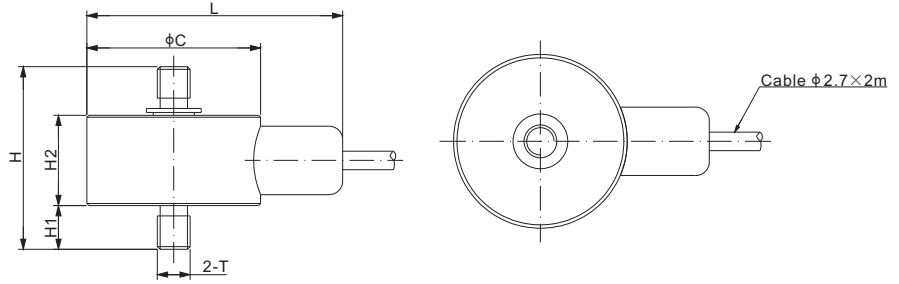
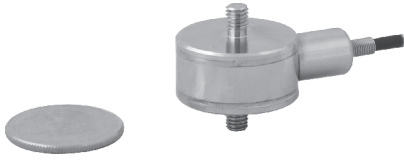


# 247BSWM



## Stainless Steel



CE RoHS

### DIMENSIONS

RATED CAPACITY	C	L	H	H1	H2	T
<b>lb/inches</b>						
10	0.75	1.22	1.01	0.25	0.45	#6-32 UNC-2A
25-100	1.00	1.47	1.05	0.25	0.52	#10-32 UNF-2A
250-1,000	1.00	1.77	1.32	0.38	0.53	1/4-28 UNF-2A
2,000-3,000	1.00	1.77	1.75	0.50	0.72	3/8-24 UNF-2A
5,000	1.25	2.02	2.23	0.63	0.94	1/2-20 UNF-2A
7,500-10,000	1.38	2.15	2.88	0.88	1.09	3/4-16 UNF-2A
<b>kg/mm</b> (conversion of above dimensions)						
4.54	19.1	31.1	25.7	6.4	11.4	#6-32 UNC-2A
11.34-45.36	25.4	37.4	26.7	6.4	13.2	#10-32 UNF-2A
113.40-453.6	25.4	44.9	33.5	9.7	13.4	1/4-28 UNF-2A
907.18-1,360.78	25.4	44.9	44.5	12.7	18.3	3/8-24 UNF-2A
2,267.96	31.8	51.3	56.6	16.0	23.9	1/2-20 UNF-2A
3,401.94-4,535.92	34.9	54.0	73.2	22.4	27.7	3/4-16 UNF-2A

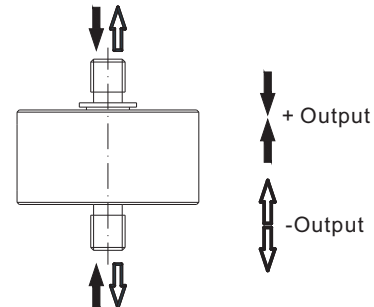
### SPECIFICATIONS

<b>Full Scale Output</b>	2.0 mV/V $\pm$ 20%	<b>Recommended Excitation</b>	5V (10V Maximum)
<b>Zero Balance</b>	$\pm$ 0.02 mV/V	<b>Insulation Resistance</b>	>2 [ 50V DC ] G $\Omega$
<b>Non-linearity</b>	< $\pm$ 0.2%	<b>Nominal Temperature Range</b>	-10°C to 40°C / 14°F to 104°F
<b>Repeatability</b>	< $\pm$ 0.1%	<b>Safe Overload</b>	150% of full scale
<b>Hysteresis Error</b>	< $\pm$ 0.2%	<b>Breaking Overload</b>	300% of full scale
<b>Creep in 30 min.</b>	< $\pm$ 0.2%	<b>Seal Type / IP Rating</b>	Environmentally Sealed / IP66
<b>Input Resistance</b>	375 $\Omega$ $\pm$ 25	<b>Cable Color Code</b>	Exc+ Red    Exc- Black Sig+ Green    Sig- White
<b>Output Resistance</b>	350 $\Omega$ $\pm$ 3		Shield Bare
<b>Material</b>	Stainless Steel		

### PART NUMBER

Rated Capacity	Part No.	Weight (kg) Approx.
10lb.....	247BSWM-10lb.....	0.10
25lb.....	247BSWM-25lb.....	0.12
50lb.....	247BSWM-50lb.....	0.12
100lb.....	247BSWM-100lb.....	0.12
250lb.....	247BSWM-250lb.....	0.12
500lb.....	247BSWM-500lb.....	0.12
1Klb.....	247BSWM-1Klb.....	0.12
2Klb.....	247BSWM-2Klb.....	0.20
3Klb.....	247BSWM-3Klb.....	0.20
5Klb.....	247BSWM-5Klb.....	0.20
7.5Klb.....	247BSWM-7.5Klb.....	0.40
10Klb.....	247BSWM-10Klb.....	0.40

### APPLICATION EXAMPLES



LOAD BUTTONS