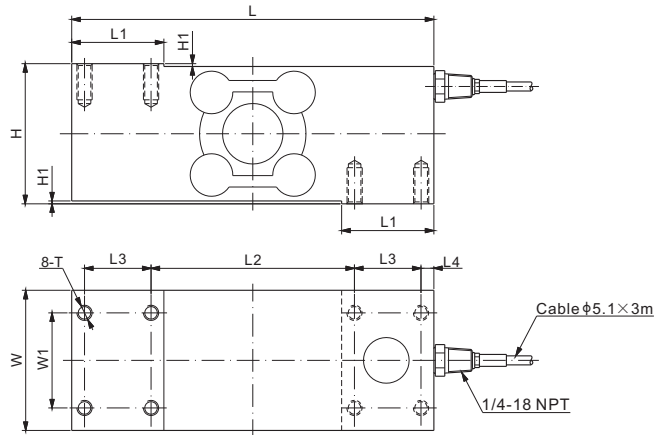


# 651KSBC; 651KSBCUN



## Stainless Steel



### DIMENSIONS

RATED CAPACITY	H	H1	L	L1	L2	L3	L4	W	W1	T
<b>651KSBC:</b> kg/mm 100-250	73.7	1.50	190.5	48.5	107.0	35.0	6.75	73.7	50.0	M8 Depth19.0
<b>lb/inches</b> (conversion of above dimensions) 220.2-551.2	2.90	0.06	7.50	1.91	4.21	1.38	0.27	2.90	1.97	M8 Depth0.75
<b>651KSBCUN:</b> kg/mm 100-250	73.7	1.50	190.5	48.5	107.0	35.0	6.75	73.7	50.0	5/16-18 UNC Depth19.0
<b>lb/inches</b> (conversion of above dimensions) 220.5-551.2	2.90	0.06	7.50	1.91	4.21	1.38	0.27	2.90	1.97	5/16-18 UNC Depth0.75

### SPECIFICATIONS

<b>Full Scale Output</b>	2.0 mV/V ± 0.25%	<b>Recommended Excitation</b>	10V (15V Maximum)
<b>Zero Balance</b>	± 0.02 mV/V	<b>Reference Max. Platform Size</b>	800×800 mm
<b>Non-linearity</b>	< ± 0.03%	<b>Insulation Resistance</b>	>2 [ 50V DC ] GΩ
<b>Repeatability</b>	< ± 0.02%	<b>Compensated Temperature Range</b>	-10°C to 50°C / 14°F to 122°F
<b>Hysteresis Error</b>	< ± 0.03%	<b>Safe Overload</b>	150% of full scale
<b>Creep in 30 min.</b>	< ± 0.03%	<b>Breaking Overload</b>	300% of full scale
<b>Input Resistance</b>	1100 Ω ± 50	<b>Seal Type / IP Rating</b>	Welded Seal / IP68/IP69K
<b>Output Resistance</b>	960 Ω ± 50	<b>Cable Color Code</b>	Exc+ Red    Exc- Black Sig+ Green    Sig- White    Shield Bare
<b>Element Material</b>	17-4PH Stainless Steel		

### PART NUMBER

Rated Capacity	Part No.	Shipping Weight (kg) Approx.
100kg.....	651KSBC-100kg.....	6.2
	651KSBCUN-100kg.....	6.2
250kg.....	651KSBC-250kg.....	6.3
	651KSBCUN-250kg.....	6.3

NTEP 1:5 000 Class III, Single Cell

100kg: OIML MAA C9, Y=18 000;  
250kg: OIML MAA C4, Y=26 000

### INTERCHANGEABLE PRODUCTS

Manufacturer	Model
<b>651KSBC</b>	
Flintec.....	PCB*
<b>651KSBCUN</b>	
Flintec.....	PCB*
Rice Lake.....	RLPCBC-60

\* Flintec PCB has 3 versions: PCB, PCBB, PCBC.  
Anyload's 651KSBC is interchangeable with PCBC metric thread, 651KSBCUN PCBC imperial thread.