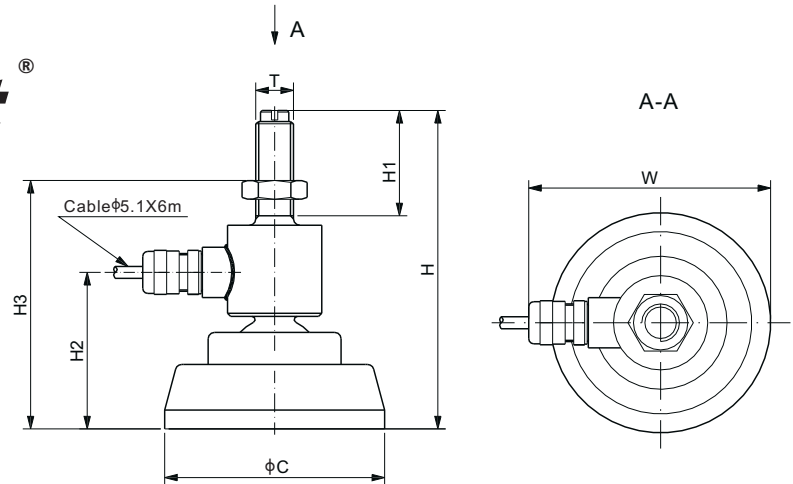


106MH-F

Alloy Steel



CE RoHS

DIMENSIONS

RATED CAPACITY	C	H	H1	H2	H3	W	T
t/mm							
0.5-1	70.0	101.3	33.5	51.8	76.0-99.0	77.0	M12
2	70.0	119.8	50.0	51.8	78.0-116.0	77.0	M16
Klb/inches							
1-2.5	2.76	3.99	1.32	1.96	2.99-3.90	3.03	1/2-20 UNF

SPECIFICATIONS			
Full Scale Output	2.0 mV/V \pm 0.25%	Element Material	Alloy Steel
Zero Balance	\pm 0.02 mV/V	Recommended Excitation	10V (15V Maximum)
Non-linearity	$<$ \pm 0.050%	Insulation Resistance	$>$ 2 [50V DC] G Ω
Repeatability Error with Fixed Installation	$<$ \pm 0.1%	Compensated Temperature Range	-10°C to 50°C / 14°F to 122°F
Repeatability Error without Fixed Installation	$<$ \pm 1%	Safe Overload	150% of full scale
Hysteresis Error	$<$ \pm 0.050%	Breaking Overload	300% of full scale
Creep in 30 min.	$<$ \pm 0.030%	Seal Type / IP Rating	Welded Seal / IP67
Input Resistance	380 Ω \pm 20	Cable Color Code	Exc+ Red Exc- Black Sig+ Green Sig- White Shield Bare
Output Resistance	350 Ω \pm 3		

PART NUMBER		
Rated Capacity	Part No.	Shipping Weight (kg) Approx.
500kg.....	106MH-F-500kg.....	1.0
1t.....	106MH-F-1t.....	1.0
2t.....	106MH-F-2t.....	1.0
1Klb.....	106MH-F-1Klb.....	1.0
2.5Klb.....	106MH-F-2.5Klb.....	1.0

WEIGH MODULE	
Model	Page
106MHM1.....	132

FORCE MEASUREMENT