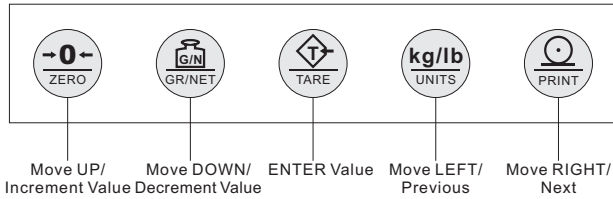


Stainless Steel SS304



Keyboard Configuration



Features:

- NTEP III/IIIL, 10 000 approved
- Measurement Canada III, 10 000; III HD 20 000
- Enclosure: Stainless steel SS304
- IP Rating: IP66
- LED 6-digit display
- Power Supply: External AC adaptor, 110VAC+10%/-15% or 220VAC+10%/-15%, 50-60Hz
- Front panel calibration and configuration
- Units of Measurement: kg, lb
- Indication of improper operation and fault
- Two way relay signal output
- Equipped with RS-232 and RS-485 connecting ports
- Print functions with programmable print format
- Built-in clock
- Functions: Auto zero scale, Auto zero tracking, PEAK, COUNT, Zero Scale, TARE, GROSS/NET

General Specifications

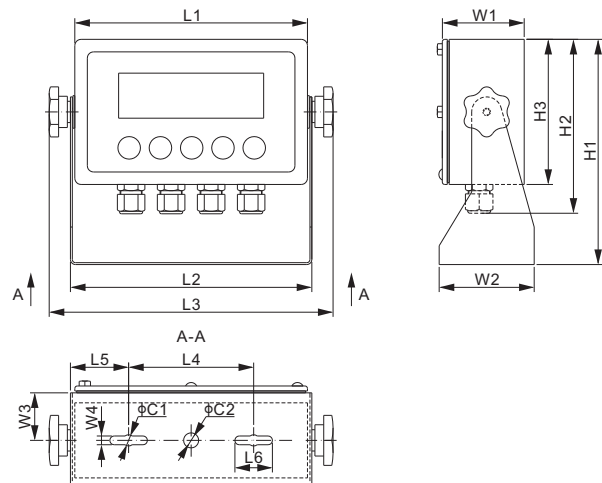
Enclosure Material	Stainless Steel SS304
Units of Measurement	kg, lb
Working Humidity	≤90% RH
Working Temperature	-10°C to 40°C / 14°F to 104°F
Dimensions	226mm × 76mm × 181mm 8.9in × 3.0in × 7.13in
Display Type	LED
Display Digits	6 digits
Digit Height	25.4mm / 1in
Display Dimensions	143mm × 41mm / 5.6in × 1.6in
Power Supply	AC adaptor, 110VAC+10%/-15% or 220VAC+10%/-15%, 50-60Hz
IP Rating	IP66

Technical Specifications

Division	1; 2; 5; 10
Tare range	100% Full Scale
Max. Number of load cells	8 × 350Ω; 16 × 700Ω
Max. power consumption	10W
Excitation Voltage	5V DC ± 5%
Resetable fuse	1.1A
Communicate interface	RS-232C, RS-485
Print interface	Serial interface, contact with printer

PART NUMBER

Part No.	Plug Type	Input Voltage	Shipping Weight (kg) Approx.
805TS-A2-17.....	Type A	110V.....	2.3
805TS-B-17.....	Type A	220V.....	2.3
805TS-CC-17.....	Type I	220V.....	2.3



DIMENSIONS

	C1	C2	H1	H2	H3	L1	L2	L3	L4	L5	L6	W1	W2	W3	W4
inches	0.4	0.5	7.1	5.5	4.6	7.3	7.6	8.9	3.9	1.8	1.2	2.6	3.0	1.5	0.3
mm	9	12	181	139	116	186	193	226	100	46.5	30	65	76	38	7