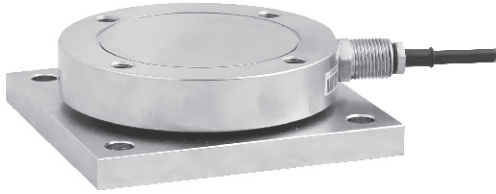
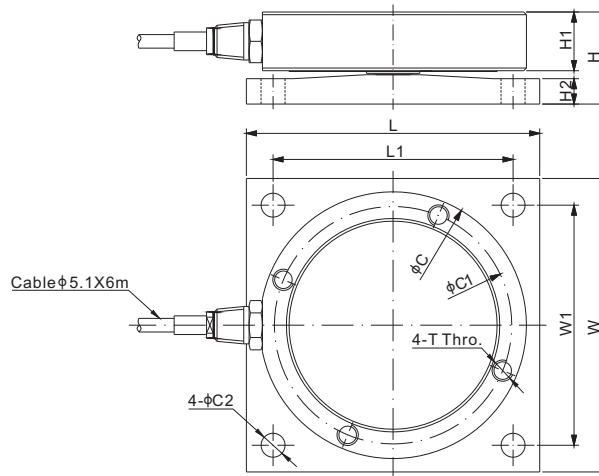


Stainless Steel, Patent Pending



Features:

- Unique design with super thin profile, suitable for tank & hopper weighing or other weighing application
- Hermetic sealed stainless steel construction
- Antibacterial design good for food & chemical industrial
- Allowed for thermal expansion, contraction or minor misalignment
- Withstand side load & lift at 50% of full scale
- Max. 3 degree on parallel loading



DIMENSIONS

RATED CAPACITY	C	C1	C2	H	H1	H2	L	L1	W	W1	T
Klb/inches											
1-2.5	3.94	3.50	0.35	1.02	0.65	0.26	4.33	3.54	4.33	3.54	3/8-16 UNC
5-10	4.72	4.21	0.35	1.26	0.81	0.33	4.33	3.54	4.33	3.54	3/8-16 UNC
25-50	5.75	4.96	0.53	1.89	1.18	0.55	6.22	4.92	6.22	4.92	1/2-13 UNC
t/mm											
0.5-1.2	100.0	89.0	9.0	26.0	16.5	6.5	110.0	90.0	110.0	90.0	M8×1.25
2.5-5	120.0	107.0	9.0	32.0	20.5	8.5	110.0	90.0	110.0	90.0	M8×1.25
12-25	146.0	126.0	13.5	48.0	30.0	14.0	158.0	125.0	158.0	125.0	M12×1.75

SPECIFICATIONS

Full Scale Output	3.0 mV/V ± 0.25%	Recommended Excitation	10V (15V Maximum)
Zero Balance	< ± 0.02 mV/V	Insulation Resistance	> 2 [50V DC] GΩ
Non-linearity	Cap. ≤ 1.2t/2.5Klb: < ± 0.05%; Cap.: 2.5t-12t/5K-25Klb: < ± 0.1% or < ± 0.3% Cap. = 25t/50Klb: < ± 0.3%	Thermal Expansion / Contraction or Minor Misalignment	500kg - 5t / 1K - 10Klb: 2mm 12t - 25t / 25K - 50Klb: 3mm
Repeatability	< ± 0.05%	Compensated Temperature Range	-10°C to 50°C / 14°F to 122°F
Hysteresis Error	Cap. ≤ 1.2t/2.5Klb: < ± 0.05%; Cap.: 2.5t-12t/5K-25Klb: < ± 0.1% or < ± 0.3% Cap. = 25t/50Klb: < ± 0.3%	Safe Overload	150% of full scale
Creep in 30 min.	< ± 0.05%	Breaking Overload	300% of full scale
Input Resistance	700Ω ± 10	Lift Protection	50% of full scale
Output Resistance	700Ω ± 5	Side Protection	50% of full scale
Element Material	17-4PH Stainless Steel	Seal Type / IP Rating	IP68 / IP69K
		Cable Color Code	Exc+ Red Exc- Black Sig+ Green Sig- White Shield Bare

PART NUMBER		
Rated Capacity	Part No.	Shipping Weight (kg) Approx.
1Klb.....	363TSM1-1Klb	-
2.5Klb.....	363TSM1-2.5Klb	2.0
5Klb.....	363TSM1-5Klb	2.7
10Klb.....	363TSM1-10Klb	2.7
25Klb.....	363TSM1-25Klb	6.5
50Klb.....	363TSM1-50Klb	-

PART NUMBER		
Rated Capacity	Part No.	Shipping Weight (kg) Approx.
500kg.....	363TSM1-500kg	-
1.2t.....	363TSM1-1.2t	2.0
2.5t.....	363TSM1-2.5t	2.7
5t.....	363TSM1-5t	2.7
12t.....	363TSM1-12t	6.5
25t.....	363TSM1-25t	-

AVAILABLE OPTIONS

- Alloy Steel: 363THM1