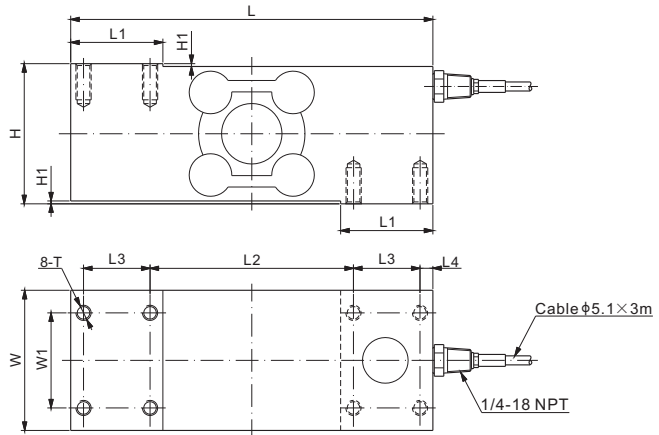


651KSBC; 651KSBCUN



Stainless Steel



DIMENSIONS

RATED CAPACITY	H	H1	L	L1	L2	L3	L4	W	W1	T
651KSBC: kg/mm 100-250	73.7	1.50	190.5	48.5	107.0	35.0	6.75	73.7	50.0	M8 Depth19.0
lb/inches (conversion of above dimensions) 220.2-551.2	2.90	0.06	7.50	1.91	4.21	1.38	0.27	2.90	1.97	M8 Depth0.75
651KSBCUN: kg/mm 100-500	73.7	1.50	190.5	48.5	107.0	35.0	6.75	73.7	50.0	5/16-18 UNC Depth19.0
lb/inches (conversion of above dimensions) 220.5-1102.3	2.90	0.06	7.50	1.91	4.21	1.38	0.27	2.90	1.97	5/16-18 UNC Depth0.75

SPECIFICATIONS

Full Scale Output	2.0 mV/V ± 0.25%	Recommended Excitation	10V (15V Maximum)
Zero Balance	± 0.02 mV/V	Reference Max. Platform Size	800×800 mm
Non-linearity	< ± 0.03%	Insulation Resistance	>2 [50V DC] GΩ
Repeatability	< ± 0.02%	Compensated Temperature Range	-10°C to 50°C / 14°F to 122°F
Hysteresis Error	< ± 0.03%	Safe Overload	150% of full scale
Creep in 30 min.	< ± 0.03%	Breaking Overload	300% of full scale
Input Resistance	1100 Ω ± 50	Seal Type / IP Rating	Welded Seal / IP68/IP69K
Output Resistance	960 Ω ± 50	Cable Color Code	Exc+ Red Exc- Black Sig+ Green Sig- White Shield Bare
Element Material	17-4PH Stainless Steel		

PART NUMBER*

Rated Capacity	Part No.	Weight (kg) Approx.
100kg.....	651KSBC-100kg.....	6.2
	651KSBCUN-100kg.....	6.2
250kg.....	651KSBC-250kg.....	6.3
	651KSBCUN-250kg.....	6.3
500kg.....	651KSBCUN-500kg.....	6.5

NTEP 1:5 000 Class III, Single Cell

100kg: OIML MAA C9, Y=18 000;
250kg-500kg: OIML MAA C4, Y=26 000

* ATEX, FM, IECEx approved versions carry the "-Ex" suffix.

INTERCHANGEABLE REFERENCE

Manufacturer	Model
651KSBC	
Flintec.....	PCB*
651KSBCUN	
Flintec.....	PCB*
Rice Lake.....	RLPCBC-60

* Flintec PCB has 3 versions: PCB, PCBB, PCBC.
Anyload's 651KSBC is interchangeable with PCBC metric thread, 651KSBCUN PCBC imperial thread.