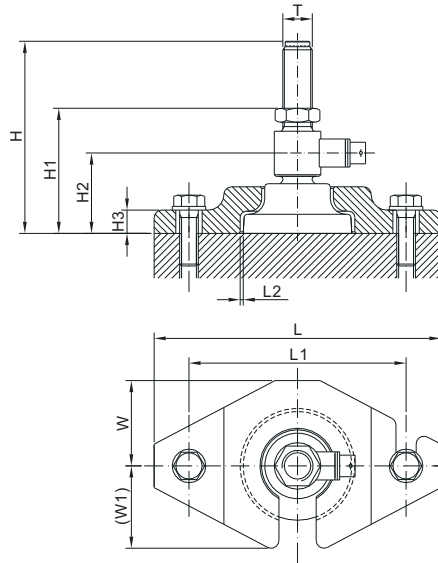




### Features:

- Assembles: 106MH-F Fatfoot™ load cell
- Capacities: 500kg, 1t, 2t, 5t, 10t, 1Klb, 2.5Klb, 5Klb, 10Klb, 20Klb
- Center pivoted and Self-checking with 50% rated load anti-lifting protection
- All direction for thermal expansion and contraction



### DIMENSIONS

LOAD CELL CAPACITY	H	H1	H2	H3	L	L1	L2	W	W1	T
<b>Klb/inches</b>										
1-2.5	3.75	2.67-3.58	1.72	0.55	6.89	5.51	0.08	1.97	1.95	1/2-20 UNF
5-10	4.87	3.07-4.64	1.99	0.59	7.28	5.51	0.08	2.17	2.13	3/4-16 UNF
20	6.90	3.86-6.62	2.73	0.91	8.86	7.09	0.12	2.66	2.66	1-14 UNS
<b>t/mm</b>										
0.5-1	95.3	68.0-91.0	43.8	14.0	175.0	140.0	2.0	50.0	49.5	M12
2	111.8	70.0-108.0	43.8	14.0	175.0	140.0	2.0	50.0	49.5	M16
5	123.8	78.0-118.0	50.8	15.0	185.0	140.0	2.0	55.0	54.1	M20
10	175.3	96.0-168.0	69.3	23.0	225.0	180.0	3.0	67.5	67.5	M24×2

### PART NUMBER

Load Cell Capacity	Part No.	Shipping Weight (kg) Approx.
1Klb-2.5Klb .....	106MHM1-(1-2.5)Klb .....	1.38
5Klb-10Klb .....	106MHM1-(5-10)Klb .....	1.83
20Klb .....	106MHM1-20Klb.....	4.30
0.5t-1t.....	106MHM1-(0.5-1)t .....	1.38
2t .....	106MHM1-2t .....	-
5t .....	106MHM1-5t.....	1.83
10t .....	106MHM1-10t .....	4.30