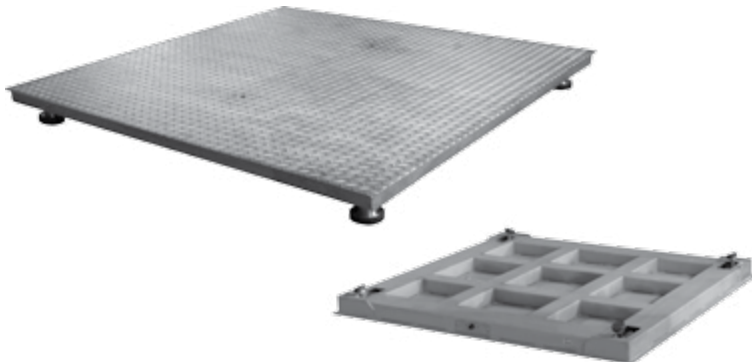


## FSP-SS Series

### FEATURES

- 17-4PH & 304 Stainless steel heavy-duty industrial design
- 4mm thick deck plate with checkered safety tread
- Rigid steel channel frame
- Pre-corner error adjustment
- Threaded eyebolt holes for easy lifting (eyebolts included)
- Installed with:
  - \* 4 high accuracy IP68 stainless steel shear beam load cells (563YS) (OIML MAA C6, Y=8,500 and NTEP 1:6000 Class III, Multiple Cell)
  - \* 4 swivel stainless steel feet with removable rubber base (AMFSS-S4)
  - \* 1 IP68 stainless steel 4-way junction box (J04ES-FS)
  - \* 2 eyebolts
  - \* Level bubble
- Measurement Canada approved



\*NTEP Approval for  
- FSP4'X4'-5Klb-SS-S4  
- FSP5'X5'-5Klb-SS-S4



\*Measurement Canada Approval for  
- FSP4'X4'-5Klb-SS-S4  
- FSP5'X5'-5Klb-SS-S4

Part#	FSP4X4-5Klb-SS-S4	FSP5X5-5Klb-SS-S4
<b>Capacity</b>	5000 lb	5000 lb
<b>Division</b>	1 lb	1 lb
<b>Platform Size</b>	48 in X 48 in / 121.9 cm X 121.9 cm	59 in X 59 in / 150 cm X 150 cm
<b>Platform Material</b>	Stainless Steel	Stainless Steel
<b>Net Weight</b>	265 lb / 120kg	441 lb / 200kg
<b>Operating Temp.</b>	0 - 40°C / 32 - 104 °F	0 - 40°C / 32 - 104 °F

\*Dimensions and specifications are subject to change without notice.