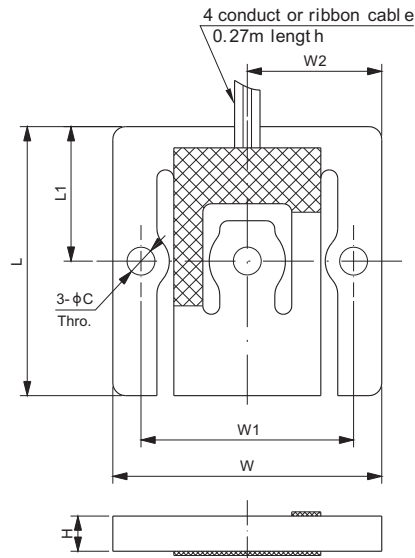
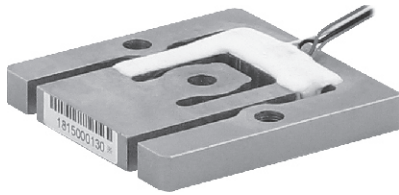


# 202WH

## Alloy Steel



PLANARS

**CE RoHS**

Designed & made for extreme high resolution balance.

### DIMENSIONS

RATED CAPACITY	C	H	L	L1	W	W1	W2
<b>kg/mm</b>							
250	6.6	8.3	63.5	31.8	63.5	50.2	31.8
<b>lb/inches</b> (conversion of above dimensions)							
551.2	0.26	0.33	2.50	1.25	2.50	1.98	1.25

### SPECIFICATIONS

<b>Full Scale Output</b>	0.9 mV/V ± 0.1%	<b>Recommended Excitation</b>	10V (15V Maximum)
<b>Calibration in mV/V/Ω</b>	± 0.05%	<b>Insulation Resistance</b>	>2 [ 50V DC ] GΩ
<b>Zero Balance</b>	± 0.02 mV/V	<b>Nominal Temperature Range</b>	-10°C to 50°C / 14°F to 122°F
<b>Non-linearity</b>	< ± 0.01%	<b>Safe Overload</b>	150% of full scale
<b>Repeatability</b>	< ± 0.01%	<b>Breaking Overload</b>	300% of full scale
<b>Hysteresis Error</b>	< ± 0.01%	<b>Seal Type / IP Rating</b>	Environmentally Sealed / IP65
<b>Creep in 30 min.</b>	< ± 0.01%	<b>Cable Color Code</b>	Exc+ Red      Exc- Black Sig+ Green    Sig- White
<b>Input Resistance</b>	1204 Ω ± 5		
<b>Output Resistance</b>	1000 Ω ± 10		
<b>Element Material</b>	Alloy Steel		

### PART NUMBER

Rated Capacity	Part No.	Shipping Weight (kg) Approx.
250kg.....	202WH-250kg.....	0.2