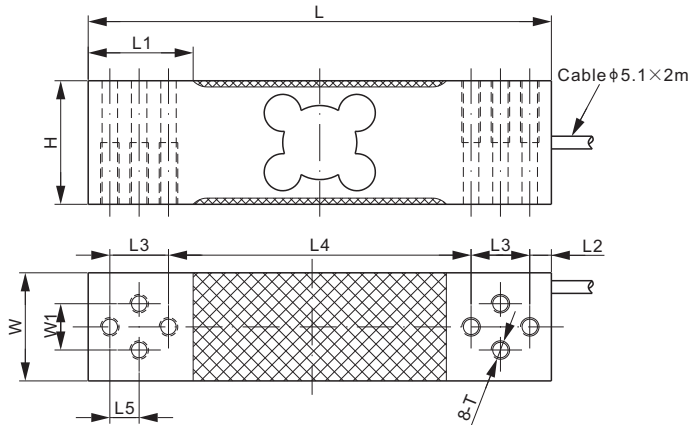
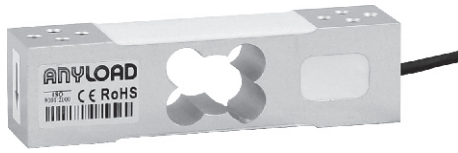


Aluminum



DIMENSIONS

RATED CAPACITY	H	L	L1	L2	L3	L4	L5	W	W1	T
kg/mm										
30; 60	40.0	150.0	34.0	7.0	19.0	98.0	9.5	35.0	15.0	M6 Depth20
lb/inches (conversion of above dimensions)										
66.1; 132.3	1.58	5.91	1.34	0.28	0.75	3.86	0.37	1.38	0.59	M6 Depth0.79

SPECIFICATIONS

Full Scale Output	2.0 ± 10% mV/V	Recommended Excitation	10V (15V Maximum)
Zero Balance	± 0.02 mV/V	Reference Max. Platform Size	450 × 450 mm
Total Error	< ± 0.020%	Insulation Resistance	> 2 [50V DC] G Ω
Repeatability	< ± 0.020%	Nominal Temperature Range	-10°C to 40°C / 14°F to 104°F
Hysteresis Error	< ± 0.020%	Safe Overload	150% of full scale
Creep in 30 min.	< ± 0.023%	Breaking Overload	300% of full scale
Input Resistance	415 Ω ± 15	Seal Type / IP Rating	Environmentally Sealed / IP66
Output Resistance	350 Ω ± 3	Cable Color Code	Exc+ Red Exc- Black Sig+ Green Sig- White Shield Bare
Element Material	Aluminum		

PART NUMBER

Rated Capacity	Part No.	Shipping Weight (kg) Approx.
30kg	108EASH-30kg	0.54
60kg	108EASH-60kg	0.54

NTEP 1:5 000 Class III, Single Cell

30kg: OIML MAA C4, Y=15 000;
60kg: OIML MAA C5, Y=12 300