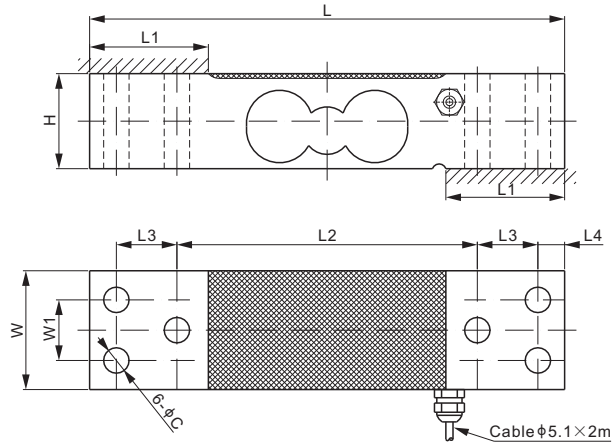
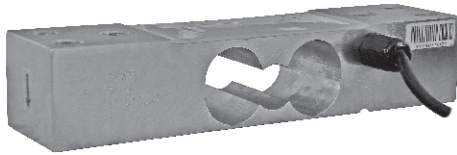


# 108WSLP



## Stainless Steel



CE RoHS

### DIMENSIONS

| RATED CAPACITY                             | C    | H    | L    | L1   | L2    | L3   | L4    | W    | W1   |
|--|------|------|------|------|-------|------|-------|------|------|
| kg/mm                                      |      |      |      |      |       |      |       |      |      |
| 150  | 10.7 | 40   | 200  | 50   | 126.5 | 25.5 | 11.25 | 50   | 25.5 |
| lb/inches (conversion of above dimensions) |      |      |      |      |       |      |       |      |      |
| 330.7                                      | 0.42 | 1.57 | 7.87 | 1.97 | 4.98  | 1.00 | 0.44  | 1.97 | 1.00 |

### SPECIFICATIONS

|                   |                       |                               |   |
|-------------------|-----------------------|-------------------------------|---|
| Full Scale Output | 2.0 ± 10% mV/V        | Recommended Excitation        | 10V (15V Maximum)   |
| Zero Balance      | ± 0.02 mV/V           | Reference Max. Platform Size  | 400 × 400 mm  |
| Non-linearity     | < ± 0.017%            | Insulation Resistance         | > 2 [ 50V DC ] GΩ   |
| Repeatability     | < ± 0.017%            | Compensated Temperature Range | -10°C to 50°C / 14°F to 122°F                                     |
| Hysteresis Error  | < ± 0.017%            | Safe Overload                 | 150% of full scale  |
| Creep in 30 min.  | < ± 0.023%            | Breaking Overload             | 300% of full scale  |
| Input Resistance  | 385Ω ± 15             | Seal Type / IP Rating         | Environmentally Sealed / IP66                                     |
| Output Resistance | 350Ω ± 3              | Cable Color Code              | Exc+ Red    Exc- Black<br>Sig+ Green    Sig- White    Shield Bare |
| Element Material  | 2Cr13 Stainless Steel |                               |   |

### PART NUMBER

| Rated Capacity | Part No.              | Shipping Weight (kg) Approx. |
|----------------|-----------------------|------------------------------|
| 150kg.....     | 108WSLP-150kg-YZ..... | 2.3                          |

### INTERCHANGEABLE PRODUCTS

| Manufacturer        | Model |
|---------------------|-------|
| Mettler-Toledo..... | 0756  |

SINGLE POINTS