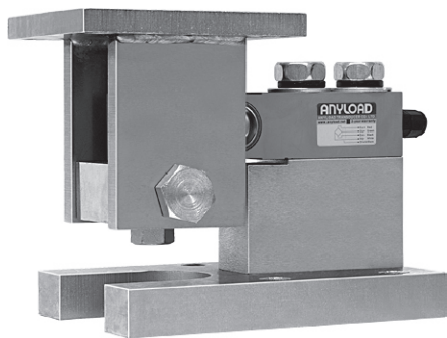


# 563YHM2

## Alloy Steel



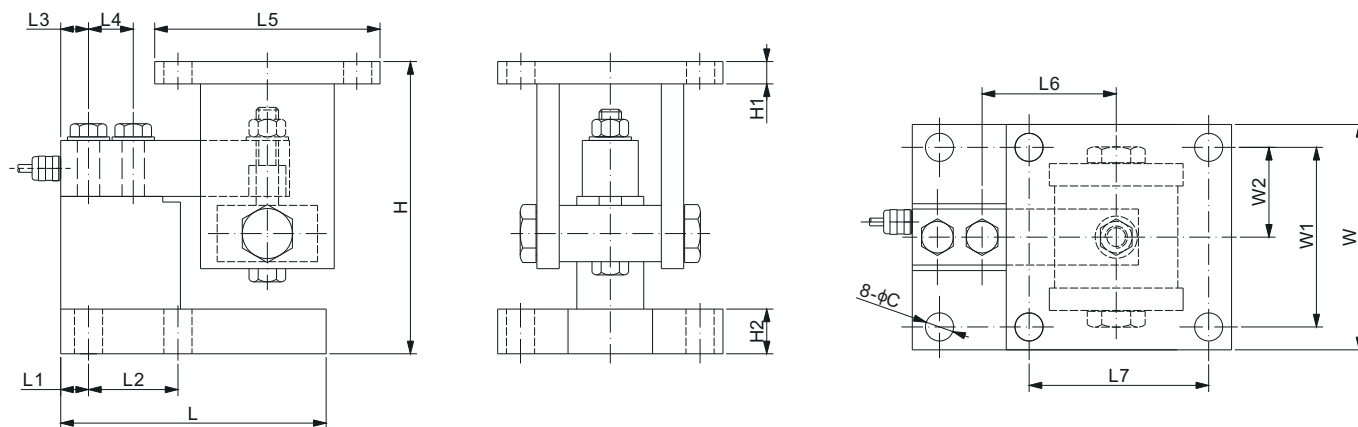
### Features:

- Assembles: 563YH single ended beam load cell
- Capacities: 100lb-10Klb/100kg-5t
- Center pivoted and self-checking
- Tension load applied to the load cell is converted to compression load application for the weigh module

Load Cell Certifications:



Load Cell Not Included.



### DIMENSIONS

LOAD CELL CAPACITY	C	H <sub>Min/Max</sub>	H1	H2	L	L1	L2	L3	L4	L5	L6	L7	W	W1	W2
<b>lb/inches</b>															
100-4,000;SE5,000	0.63	6.50/6.69	0.50	1.00	5.98	0.67	2.00	0.62	1.00	5.04	3.00	4.02	5.04	4.02	2.01
5,000-10,000	0.63	6.50/6.69	0.50	1.00	7.76	1.06	2.99	0.75	1.50	5.04	3.75	4.02	5.04	4.02	2.01
<b>kg/mm</b>															
100-2,000	16.0	165.0/170.0	12.7	25.4	152.0	17.0	50.8	15.80	25.4	128.0	76.2	102.1	128.0	102.1	51.1
3,000-5,000	16.0	165.0/170.0	12.7	25.4	197.0	27.0	75.9	19.10	38.1	128.0	95.3	102.1	128.0	102.1	51.1

SE refers to small envelope

### PART NUMBER

Load Cell Capacity	Part No.	Shipping Weight (kg) Approx.
100lb-SE5Klb.....	563YHM2-(0.1-SE5)Klb.....	9.1
5Klb-10Klb.....	563YHM2-(5-10)Klb.....	11.0
100kg-2t.....	563YHM2-(100kg-2t).....	9.1
3t-5t.....	563YHM2-(3-5)t.....	11.0

### INTERCHANGEABLE PRODUCTS

Manufacturer	Model
Rice Lake.....	RL1800*

\*H<sub>Min/Max</sub> of RL1800 is 5.25/5.56 inch for 100lb to SE5Klb;  
6.12/6.62 inch for 5Klb to 10Klb.

WEIGH MODULES