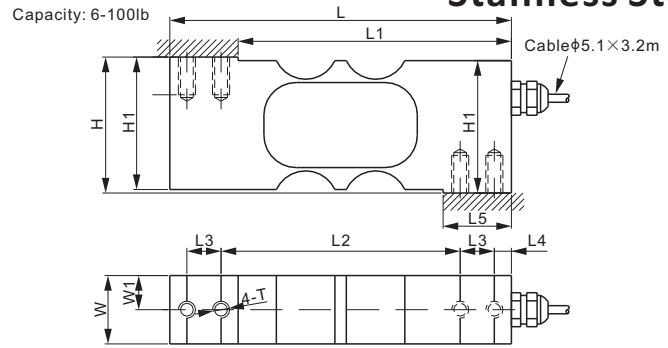
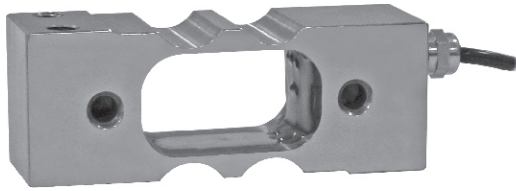
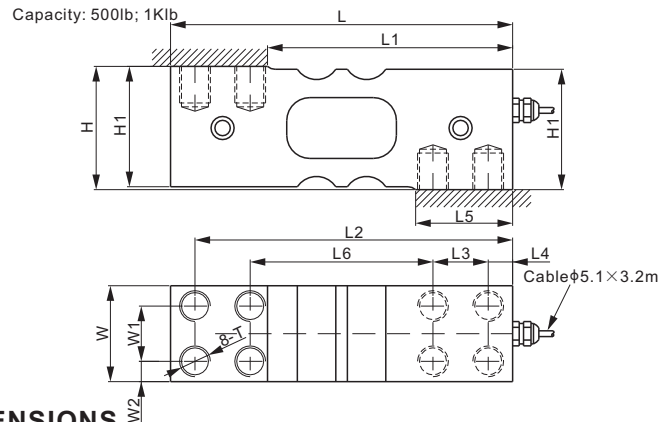
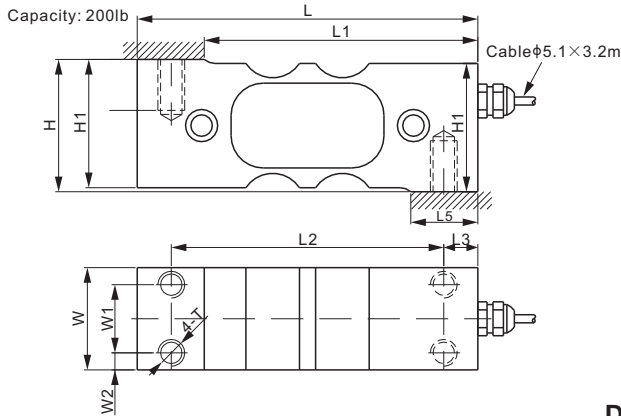


Stainless Steel



CE RoHS



DIMENSIONS

RATED CAPACITY	H	H1	L	L1	L2	L3	L4	L5	L6	W	W1	W2	T
lb/inches													
6	1.99	1.94	5.00	4.00	3.50	0.50	0.25	1.00	-	0.50	0.25	-	1/4-28 UNF
10-100	1.99	1.94	5.00	4.00	3.50	0.50	0.25	1.00	-	1.00	0.50	-	1/4-28 UNF
200	1.94	1.88	5.00	4.02	4.00	0.50	-	1.00	-	1.50	1.00	0.25	M10
500; 1,000	2.52	2.46	7.00	4.02	6.50	1.13	0.50	1.98	3.74	1.96	1.13	0.42	M16
kg/mm (conversion of above dimensions)													
2.72	50.5	49.2	127.0	101.6	88.9	12.7	6.4	25.4	-	12.7	6.4	-	1/4-28 UNF
4.54-45.36	50.5	49.2	127.0	101.6	88.9	12.7	6.4	25.4	-	25.4	12.7	-	1/4-28 UNF
90.72	49.3	47.8	127.0	102.0	101.6	12.7	-	25.4	-	38.1	25.4	6.4	M10
226.80; 453.59	64.0	62.5	177.8	127.4	165.1	28.7	12.7	50.4	95.0	49.8	28.7	10.6	M16

SPECIFICATIONS

Full Scale Output	2.0 ± 10% mV/V	Recommended Excitation	10V (15V Maximum)
Zero Balance	± 0.02 mV/V	Reference Max. Platform Size	Cap. ≤ 100lb: 400 × 450 mm
Non-linearity	< ± 0.017%		Cap. = 200lb: 500 × 550 mm
Repeatability	< ± 0.017%		Cap. ≥ 500lb: 650 × 700 mm
Hysteresis Error	< ± 0.017%	Insulation Resistance	> 2 [50V DC] GΩ
Creep in 30 min.	< ± 0.023%	Compensated Temperature Range	-10°C to 40°C / 14°F to 104°F
Input Resistance	385Ω ± 15	Safe Overload	150% of full scale
Output Resistance	350Ω ± 3	Breaking Overload	300% of full scale
Element Material	2Cr13 Stainless Steel	Seal Type / IP Rating	Environmentally Sealed / IP66
		Cable Color Code	Exc+ Red Exc- Black
			Sig+ Green Sig- White Shield Bare

PART NUMBER

Rated Capacity	Part No.	Shipping Weight (kg) Approx.
6lb.....	108QS-6lb-YZ.....	1.0
10lb.....	108QS-10lb-YZ.....	1.0
15lb.....	108QS-15lb-YZ.....	1.0
25lb.....	108QS-25lb-YZ.....	1.0
50lb.....	108QS-50lb-YZ.....	1.0
100lb.....	108QS-100lb-YZ.....	1.0
200lb.....	108QS-200lb-YZ.....	1.2
500lb.....	108QS-500lb-YZ.....	3.0
1Klb.....	108QS-1Klb-YZ.....	3.1

INTERCHANGEABLE PRODUCTS

Manufacturer	Model
Cardinal.....	SP 6-100lb*
Cardinal.....	SP 200, 500, 1000lb
Coti Global.....	CG-SPL/CG-SPLM

* SP 6-100lb is of aluminum construction