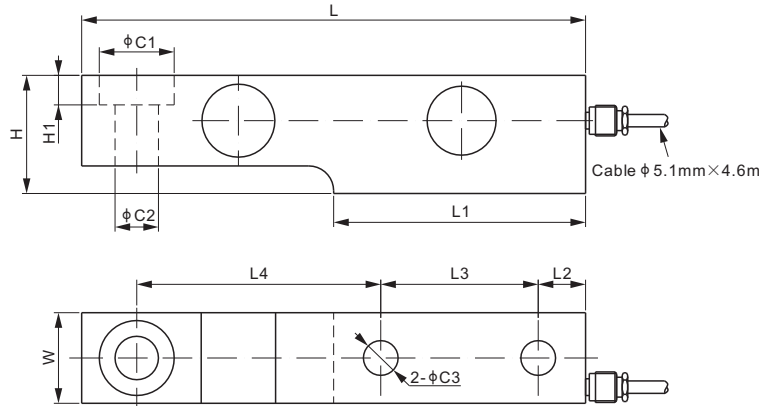
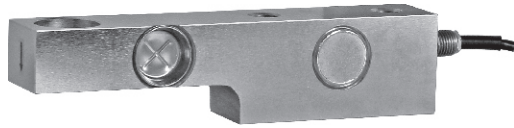


563YSRS



Stainless Steel



SINGLE ENDED BEAMS



CE RoHS



Pending Pending

DIMENSIONS

RATED CAPACITY	C1	C2	C3	H	H1	L	L1	L2	L3	L4	W
Klb/inches											
1-5	1.19	0.69	0.55	1.87	0.47	8.00	4.00	0.75	2.50	3.87	1.44
kg/mm (conversion of above dimensions)											
454-2,268	30.2	17.5	14.0	47.6	11.9	203.2	101.6	19.1	63.5	98.4	36.5

SPECIFICATIONS

Full Scale Output	2.0 ± 1% mV/V	Recommended Excitation	10V (15V Maximum)
Zero Balance	± 0.02 mV/V	Insulation Resistance	>2 [50V DC] GΩ
Non-linearity	< ± 0.023%	Compensated Temperature Range	-10°C to 50°C / 14°F to 122°F
Repeatability	< ± 0.023%	Safe Overload	150% of full scale
Hysteresis Error	< ± 0.023%	Breaking Overload	300% of full scale
Creep in 30 min.	< ± 0.030%	Seal Type / IP Rating	Welded Seal / IP68
Input Resistance	350Ω ± 7	Cable Color Code	Exc+ Red Exc- Black
Output Resistance	350Ω ± 3		Sig+ Green Sig- White
Element Material	17-4PH Stainless Steel		Shield Bare

PART NUMBER

Rated Capacity	Part No.	Shipping Weight (kg) Approx.
1Klb	563YSRS-1Klb.....	2.0
2Klb	563YSRS-2Klb.....	2.0
5Klb.....	563YSRS-5Klb.....	2.0

INTERCHANGEABLE PRODUCTS

Manufacturer	Model
Coti Global.....	CG-SB3
HBM.....	SB3
Rice Lake.....	RLSSB
Vishay Revere Transducers.....	SSB