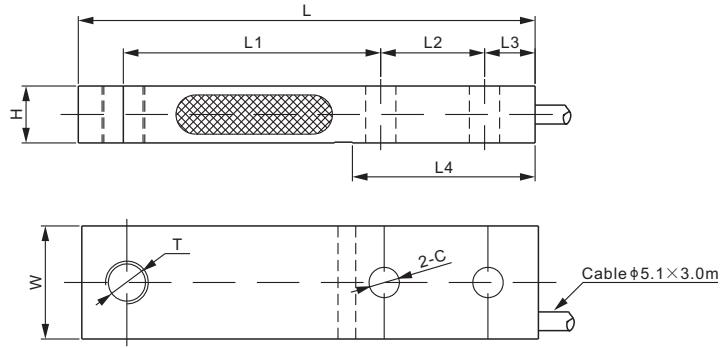


563YSBK; 563YSBKUN

Stainless Steel



SINGLE ENDED BEAMS



CE RoHS



Pending Pending

DIMENSIONS

RATED CAPACITY	C	H	L	L1	L2	L3	L4	W	T
563YSBK:									
kg/mm									
200	13.0	12.7	128.5	76.2	25.4	14.2	54.0	31.8	M12
500	13.0	15.9	128.5	76.2	25.4	14.2	54.0	31.8	M12
1,000	13.0	19.1	128.5	76.2	25.4	14.2	54.0	31.8	M12
2,000	13.0	25.4	128.5	76.2	25.4	14.2	54.0	31.8	M12
lb/inches (conversion of above dimensions)									
441	0.51	0.50	5.06	3.00	1.00	0.56	2.12	1.25	M12
1,102	0.51	0.63	5.06	3.00	1.00	0.56	2.12	1.25	M12
2,205	0.51	0.75	5.06	3.00	1.00	0.56	2.12	1.25	M12
4,409	0.51	1.00	5.06	3.00	1.00	0.56	2.12	1.25	M12
563YSBKUN:									
kg/mm									
200	13.0	12.7	128.5	76.2	25.4	14.2	54.0	31.8	1/2-20 UNF
500	13.0	15.9	128.5	76.2	25.4	14.2	54.0	31.8	1/2-20 UNF
1,000	13.0	19.1	128.5	76.2	25.4	14.2	54.0	31.8	1/2-20 UNF
2,000	13.0	25.4	128.5	76.2	25.4	14.2	54.0	31.8	1/2-20 UNF
lb/inches (conversion of above dimensions)									
441	0.51	0.50	5.06	3.00	1.00	0.56	2.12	1.25	1/2-20 UNF
1,102	0.51	0.63	5.06	3.00	1.00	0.56	2.12	1.25	1/2-20 UNF
2,205	0.51	0.75	5.06	3.00	1.00	0.56	2.12	1.25	1/2-20 UNF
4,409	0.51	1.00	5.06	3.00	1.00	0.56	2.12	1.25	1/2-20 UNF

SPECIFICATIONS

Full Scale Output	2.0 ± 0.1% mV/V	Recommended Excitation	10V (15V Maximum)
Zero Balance	± 0.02 mV/V	Insulation Resistance	>2 [50V DC] GΩ
Non-linearity	< ± 0.023%	Compensated Temperature Range	-10°C to 50°C / 14°F to 122°F
Repeatability	< ± 0.017%	Safe Overload	150% of full scale
Hysteresis Error	< ± 0.023%	Breaking Overload	300% of full scale
Creep in 30 min.	< ± 0.023%	Seal Type / IP Rating	Environmentally Sealed / IP67
Input Resistance	1100 Ω ± 50	Cable Color Code	Exc+ Red Exc- Black
Output Resistance	1000 Ω ± 5		Sig+ Green Sig- White
Element Material	2Cr13 Stainless Steel		Shield Bare

PART NUMBER

Rated Capacity	Part No.	Shipping Weight (kg) Approx.
200kg	563YSBK-200kg-YZ	0.4
	563YSBKUN-200kg-YZ	0.4
500kg	563YSBK-500kg-YZ	0.4
	563YSBKUN-500kg-YZ	0.4
1t	563YSBK-1t-YZ	0.6
	563YSBKUN-1t-YZ	0.6
2t	563YSBK-2t-YZ	0.8
	563YSBKUN-2t-YZ	0.8

INTERCHANGEABLE PRODUCTS

Manufacturer	Model
Flintec	BK2