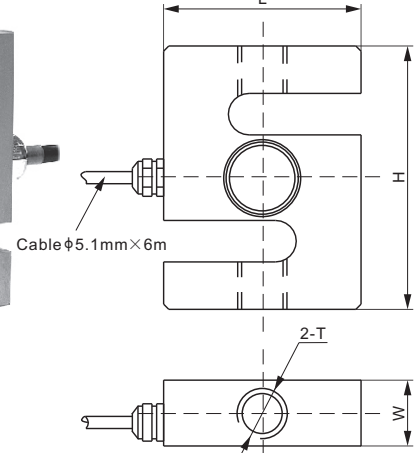
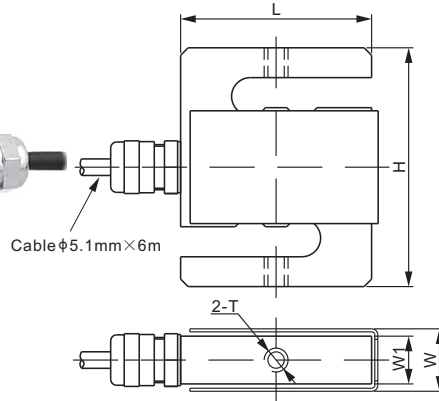
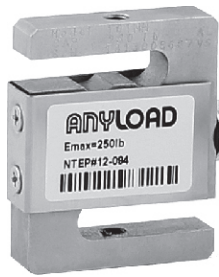


Capacity: 50-250lb

Capacity: 500lb-20Klb



### DIMENSIONS

RATED CAPACITY	H	L	W	W1	T
<b>lb/inches</b>					
50-250	2.50	2.00	0.65	0.50	1/4-28 UNF-2B
500	3.00	2.00	0.75	-	1/2-20 UNF-2B
1,000-3,000	3.00	2.00	1.11	-	1/2-20 UNF-2B
5,000; 10,000	4.00	3.00	1.00	-	3/4-16 UNF-2B
15,000	5.50	4.00	1.25	-	1-14 UNS-2B
20,000	7.00	4.92	2.00	-	1 1/4-12 UNF-2B
<b>kg/mm</b> (conversion of above dimensions)					
22.68-113.4	63.5	50.8	16.6	12.7	1/4-28 UNF-2B
226.8	76.2	50.8	19.1	-	1/2-20 UNF-2B
453.6-1,360.8	76.2	50.8	28.2	-	1/2-20 UNF-2B
2,268; 4,535.9	101.6	76.2	25.4	-	3/4-16 UNF-2B
6,803.9	139.7	101.6	31.8	-	1-14 UNS-2B
9,071.8	177.8	125.0	50.8	-	1 1/4-12 UNF-2B

### SPECIFICATIONS

<b>Full Scale Output</b>	3.0 ± 1% mV/V	<b>Recommended Excitation</b>	10V (15V Maximum)
<b>Zero Balance</b>	± 0.02 mV/V	<b>Insulation Resistance</b>	> 2 [ 50V DC ] GΩ
<b>Non-linearity</b>	< ± 0.017%	<b>Compensated Temperature Range</b>	-10°C to 50°C / 14°F to 122°F
<b>Repeatability</b>	< ± 0.017%	<b>Safe Overload</b>	150% of full scale
<b>Hysteresis Error</b>	< ± 0.017%	<b>Breaking Overload</b>	300% of full scale
<b>Creep in 30 min.</b>	< ± 0.023%	<b>Seal Type / IP Rating</b>	Environmentally Sealed / IP67
<b>Input Resistance</b>	350Ω ± 7	<b>Cable Color Code</b>	Exc+ Red      Exc- Black
<b>Output Resistance</b>	350Ω ± 3		Sig+ Green    Sig- White
<b>Element Material</b>	Alloy Steel, Nickel Plated		Shield Bare

### PART NUMBER

Rated Capacity	Part No.	Shipping Weight (kg) Approx.
50lb	101NH-50lb	0.6
100lb	101NH-100lb	0.6
200lb	101NH-200lb	0.6
250lb	101NH-250lb	0.6
500lb	101NH-500lb	0.7
1Klb	101NH-1Klb	1.0
1.5Klb	101NH-1.5Klb	1.0
2Klb	101NH-2Klb	1.0
2.5Klb	101NH-2.5Klb	1.0
3Klb	101NH-3Klb	1.0
5Klb	101NH-5Klb	1.5
10Klb	101NH-10Klb	1.5
15Klb	101NH-15Klb	3.0
20Klb	101NH-20Klb	6.8

### WEIGH MODULE

Model	Page
101NHM2	108

### INTERCHANGEABLE PRODUCTS

Manufacturer	Model
Coti Global	CGSB
Rice Lake	RL20000
Rice Lake	RL20001
Vishay Celtron	STC
Vishay Revere Transducers	363
Vishay Sensortronics	60001

100lb-3Klb: NTEP 1:3 000 Class III, Single Cell;  
 5Klb-20Klb: NTEP 1:4 500 Class III, Single Cell  
 200kg-1.5t: OIML MAA C3, Y=17 000;  
 2t-10t: OIML MAA C4.5, Y=14 000

S-BEAMS