

# 101BHM2

## Alloy Steel



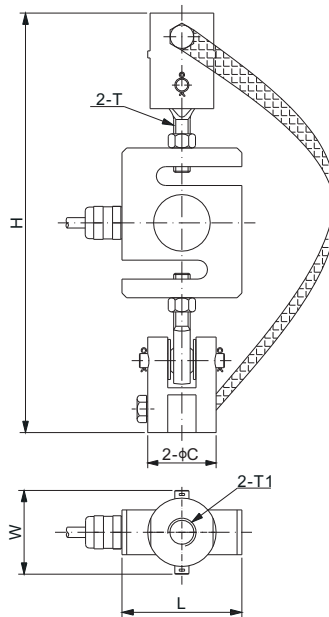
### Features:

- Assembles: 101BH S-beam load cell
- Capacities: 50kg-2t
- Allows for high accuracy tension loading

Load Cell Certifications:



Load Cell Not Included.



### DIMENSIONS

LOAD CELL CAPACITY	C	H <sub>Min/Max</sub>	L	W	T	T1
<b>kg/mm</b>						
50-1,500	41	235/243	50.8	51.0	M12×1.75	M12 Depth22
2,000	61	324/330	76.2	73.0	M18×1.50	M20 Depth32
<b>lb/inches</b> (conversion of above dimensions)						
110.23-3,306.93	1.61	9.25/9.57	2.00	2.01	M12×1.75	M12 Depth0.87
4,409.25	2.40	12.76/12.99	3.00	2.87	M18×1.50	M20 Depth1.26

### PART NUMBER

Load Cell Capacity	Part No.	Weight (kg) Approx.
50kg-1.5t.....	101BHM2-(50-1500)kg.....	1.3
2t.....	101BHM2-2t.....	3.2