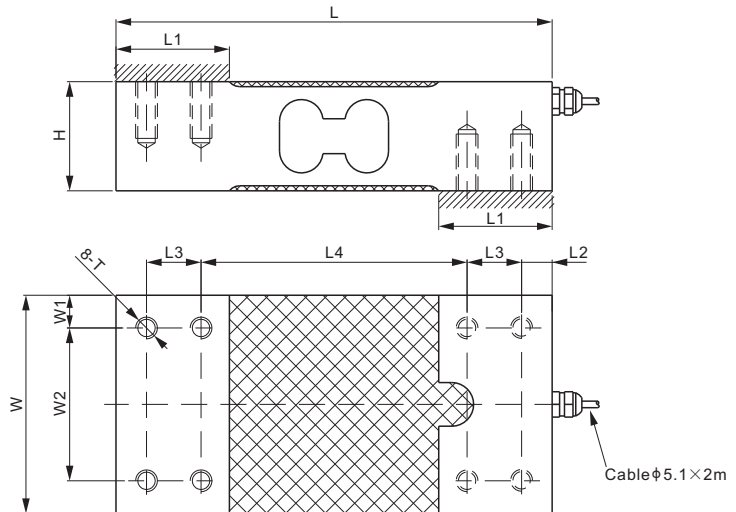
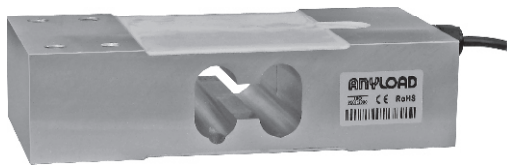


108JA



Aluminum



DIMENSIONS

RATED CAPACITY	H	L	L1	L2	L3	L4	W	W1	W2	T
kg/mm										
20-100	25.0	150.0	32.5	6.0	19.0	100.0	45.0	7.5	30.0	M8 Depth15
150-400	40.0	150.0	38.5	6.0	25.0	88.0	75.0	12.5	50.0	M8 Depth20
500-2,000	50.0	200.0	52.0	14.0	25.0	122.0	100.0	15.0	70.0	M10 Depth23
lb/inches (conversion of above dimensions)										
44.1-220.5	0.98	5.91	1.28	0.24	0.75	3.94	1.77	0.30	1.18	M8 Depth0.59
330.7-881.8	1.57	5.91	1.52	0.24	0.98	3.46	2.95	0.49	1.97	M8 Depth0.79
1,102.3-4,409.2	1.97	7.87	2.05	0.55	0.98	4.80	3.94	0.59	2.76	M10 Depth0.91

SPECIFICATIONS

Type	YZ108	Recommended Excitation	10V (15V Maximum)
Full Scale Output	2.0 ± 10% mV/V	Reference Max. Platform Size	Capacity: 20-100kg: 460×600 mm
Zero Balance	± 0.02 mV/V		Capacity: 150-400kg: 600×600 mm
Non-linearity	< ± 0.017%		Capacity: 500kg-2t: 900×900 mm
Repeatability	< ± 0.017%	Insulation Resistance	>2 [50V DC] GΩ
Hysteresis Error	< ± 0.017%	Nominal Temperature Range	-10°C to 40°C / 14°F to 104°F
Creep in 30 min.	< ± 0.017%	Safe Overload	150% of full scale
Input Resistance	415Ω ± 15	Breaking Overload	300% of full scale
Output Resistance	350Ω ± 3	Seal Type / IP Rating	Environmentally Sealed / IP66
Element Material	Aluminum	Cable Color Code	Exc+ Red Exc- Black Sig+ Green Sig- White Shield Bare

PART NUMBER

Rated Capacity	Part No.	Shipping Weight (kg) Approx.
20kg.....	108JA-20kg.....	0.7
50kg.....	108JA-50kg.....	0.7
60kg.....	108JA-60kg.....	0.7
75kg.....	108JA-75kg.....	0.7
100kg.....	108JA-100kg.....	0.7
150kg.....	108JA-150kg.....	1.1
200kg.....	108JA-200kg.....	1.1
300kg.....	108JA-300kg.....	1.1
400kg.....	108JA-400kg.....	1.1
500kg.....	108JA-500kg.....	2.46
750kg.....	108JA-750kg.....	2.46
1t.....	108JA-1t.....	2.46
1.5t.....	108JA-1.5t.....	2.46
2t.....	108JA-2t.....	2.46

200kg-2t: NTEP 1:4 000 Class III, Single Cell

20kg-400kg: OIML C3, Y=4 300;
500kg-2t: OIML MAA C4, Y=4 000