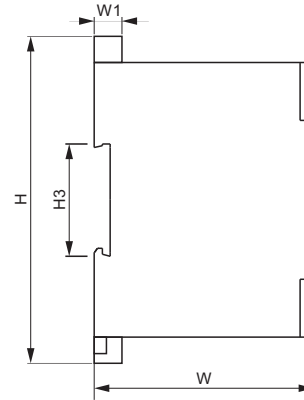
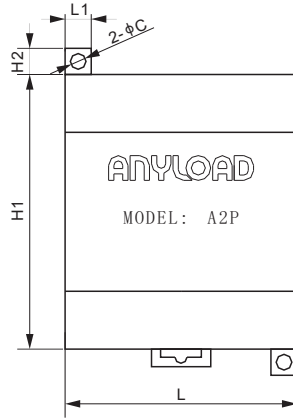




Features:

- Can drive up to 2 x350Ω load cells or 4x700Ω load cells
- Can be connected directly to 1 or 2 load cells or connected to several load cells through a junction box



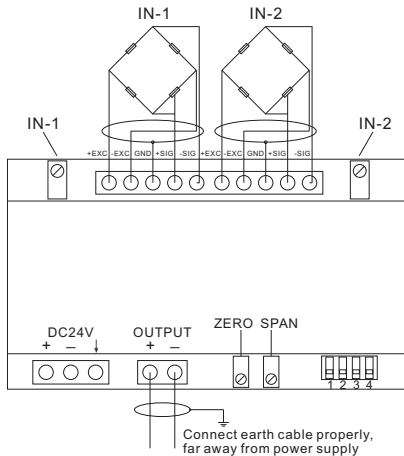
DIMENSIONS

	C	H	H1	H2	H3	L	L1	W	W1
mm	4.8	100	84	8	35	71	8	67.2	8.5
inches	0.2	3.9	3.3	0.3	1.4	2.8	0.3	2.6	0.3

SPECIFICATIONS

Load Cell Type		All strain gage type
Weight (G), approx.	kg/lb	0.2 / 0.4
Power Supply	V DC	24 ± 20% or AC95 - 250V
Input Range	mV	0 - 30
Max. Power Voltage	DC	30V, 2.5A
	AC	250V, 3A
Output Signal	V	0 - 10
	mA	4 - 20 (Adjustable ± 20%)
Max. Output Signal	V	30
Installation		Standard rail channel (Indoor)
Total Error	% FS	0.02
Enclosure Material		PVC

CONNECTION DIAGRAM



PART NUMBER

Part No.	Shipping Weight (kg) Approx.
A2P.....	0.2