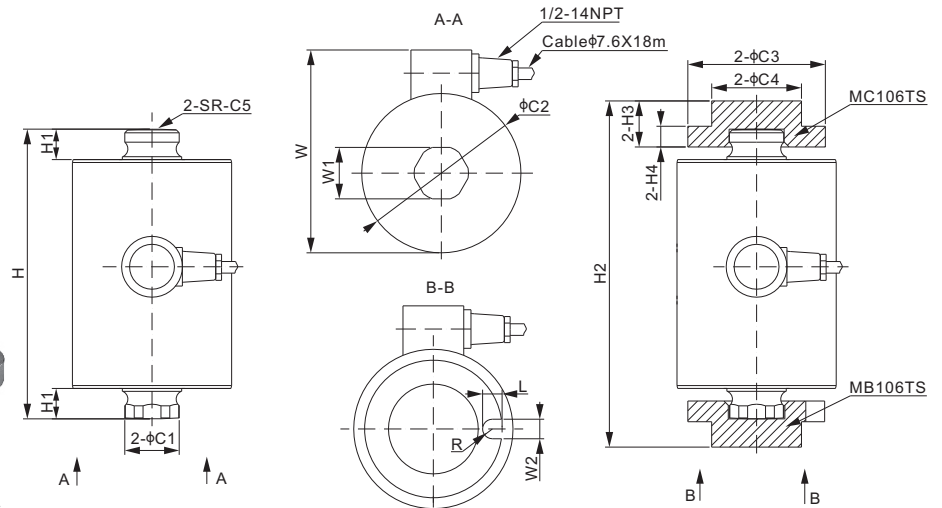


Stainless Steel



Mounting hardware to be ordered separately.



Material of both MB106TS & MC106TS are alloy steel with zinc plating

DIMENSIONS

RATED CAPACITY	C1	C2	C3	C4	C5	H	H1	H2	H3	H4	L	R	W	W1	W2
lb/inches															
50,000-100,000	1.48	4.33	3.74	2.44	11.02	7.87	0.83	9.41	1.25	0.56	0.53	0.27	5.51	1.40	0.53
kg/mm															
30,000	37.6	110.0	95.0	62.0	280.0	200.0	21.0	239.0	31.8	14.3	13.5	6.75	140.0	35.5	13.5

SPECIFICATIONS

Full Scale Output	2.0 ± 0.1% mV/V	Recommended Excitation	10V (15V Maximum)
Zero Balance	± 0.02 mV/V	Insulation Resistance	> 2 [50V DC] GΩ
Non-linearity	< ± 0.030%	Compensated Temperature Range	-10°C to 50°C / 14°F to 122°F
Repeatability	< ± 0.017%	Safe Overload	150% of full scale
Hysteresis Error	< ± 0.017%	Breaking Overload	300% of full scale
Creep in 30 min.	< ± 0.020%	Seal Type / IP Rating	Welded Seal / IP68
Input Resistance	1150Ω ± 50	Cable Color Code	Exc+ Red Exc- Black
Output Resistance	1000Ω ± 3		Sig+ Green Sig- White
Element Material	2Cr13 Stainless Steel		Shield Bare

PART NUMBER

Rated Capacity	Part No.	Shipping Weight (kg) Approx.
50Klb.....	106TS-50Klb-YZ.....	6.0
100Klb.....	106TS-100Klb-YZ.....	6.0
30t.....	106TS-30t-YZ.....	6.0

INTERCHANGEABLE PRODUCTS

Manufacturer	Model
Mettler-Toledo.....	Powercell 760/MTX*

* Powercell 760 and MTX are digital load cells.



10t-50t: NTEP 1:10 000 Class III L, Multiple Cell



10t-50t: OIML MAA C3, Y=16 000