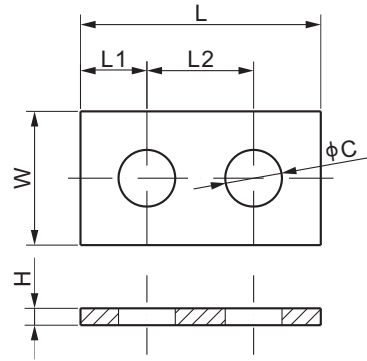
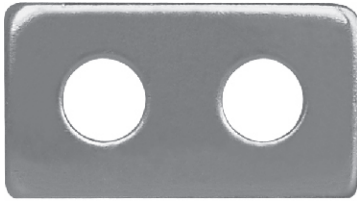


# SPACER

## Load Cell Spacer, Nickel Plated Mild Steel



PART NUMBER	LOAD CELL CAPACITY *	DIMENSIONS					
		C	H	L	L1	L2	W
<b>kg/mm</b>							
SPACER-1/2	100-2,000	13.5	4	57.20	15.8	25.4	31.8
SPACER-3/4	2,500-5,000	19.8	4	76.20	19.1	38.1	38.1
SPACER-1	10,000	26.2	5	101.6	25.4	50.8	50.8
<b>lb/inch</b>							
SPACER-1/2	100-SE5,000	0.53	0.16	2.25	0.62	1.00	1.25
SPACER-3/4	5,000; 10,000	0.78	0.16	3.00	0.75	1.50	1.50
SPACER-1	15,000; 20,000	1.03	0.20	4.00	1.00	2.00	2.00

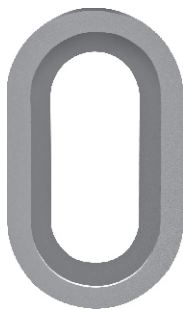
\* Refer to 563 series.

### AVAILABLE OPTIONS

- Stainless Steel

# EL

## End Link, Cast Steel



### DIMENSIONS

PART NUMBER	H	H1	L1	L2	W	Safe Working Load
<b>inches</b>						
EL-20	8.58	6.06	2.20	1.26	0.79	27,500 lb
EL-29	8.58	6.06	2.52	1.26	1.14	27,500 lb
<b>mm (conversion of above dimensions)</b>						
EL-20	218.0	154.0	56.0	32.0	20.0	12,474kg
EL-29	218.0	154.0	64.0	32.0	29.0	12,474kg