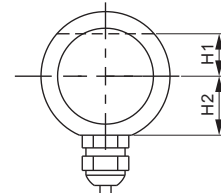
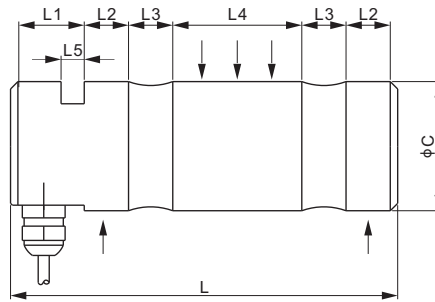


Stainless Steel



Capacity < 10t: Cable $\phi 5.1 \times 3m$
Capacity $\geq 10t$: Cable $\phi 5.1 \times 10m$



LOAD PINS

DIMENSIONS

RATED CAPACITY	C	H1	H2	L	L1	L2	L3	L4	L5
kg/mm									
2,000-5,000	35.0	11.5	16.0	105.0	20.0	12.0	12.0	35.0	6.30
10,000	50.0	20.0	22.5	152.0	30.0	18.0	18.0	48.0	10.5
20,000	65.0	22.5	28.5	190.0	32.0	20.0	25.0	65.0	10.5
40,000	85.0	22.5	28.5	256.0	36.0	35.0	28.0	89.0	12.5
70,000	100.0	34.0	35.0	328.0	40.0	50.0	32.0	120.0	15.0
lb/inches (conversion of above dimensions)									
4,409.2-11,023.1	1.38	0.45	0.63	4.13	0.79	0.47	0.47	1.38	0.25
22,046.2	1.97	0.79	0.89	5.98	1.18	0.71	0.71	1.89	0.41
44,092.5	2.56	0.89	1.12	7.48	1.26	0.79	0.98	2.56	0.41
88,184.9	3.35	0.89	1.12	10.08	1.42	1.38	1.10	3.50	0.49
154,323.6	3.94	1.34	1.38	12.91	1.57	1.97	1.26	4.72	0.59

SPECIFICATIONS

Full Scale Output	1.0 ± 10% mV/V	Recommended Excitation	10V (15V Maximum)
Zero Balance	± 0.02 mV/V	Insulation Resistance	> 2 [50V DC] GΩ
Non-linearity	< ± 0.50%	Compensated Temperature Range	-10°C to 50°C / 14°F to 122°F
Repeatability	< ± 0.30%	Safe Overload	150% of full scale
Hysteresis Error	< ± 0.50%	Breaking Overload	400% of full scale
Creep in 30 min.	< ± 0.20%	Seal Type / IP Rating	Environmentally Sealed / IP67
Input Resistance	400Ω ± 20	Cable Color Code	Exc+ Red Exc- Black
Output Resistance	350Ω ± 3		Sig+ Green Sig- White
Element Material	2Cr13 Stainless Steel		Shield Bare

PART NUMBER

Rated Capacity	Part No.	Shipping Weight (kg) Approx.
2t.....	535TS-2t-YZ.....	0.8
5t.....	535TS-5t-YZ.....	0.8
10t.....	535TS-10t-YZ.....	2.1
20t.....	535TS-20t-YZ.....	10.4
40t.....	535TS-40t-YZ.....	11.2
70t.....	535TS-70t-YZ.....	20.0

APPLICATION EXAMPLES

