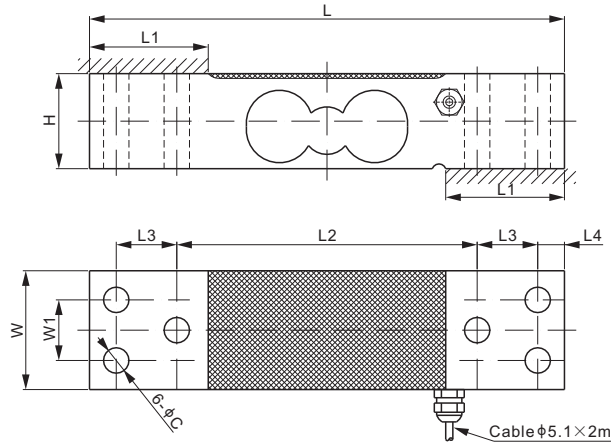
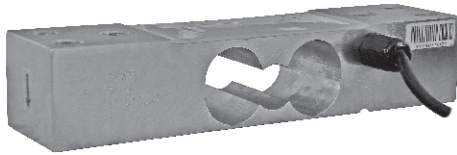


108WSLP



Stainless Steel



CE RoHS

DIMENSIONS

RATED CAPACITY	C	H	L	L1	L2	L3	L4	W	W1
kg/mm									
150	10.7	40	200	50	126.5	25.5	11.25	50	25.5
lb/inches (conversion of above dimensions)									
330.7	0.42	1.57	7.87	1.97	4.98	1.00	0.44	1.97	1.00

SPECIFICATIONS

Full Scale Output	2.0 ± 10% mV/V	Recommended Excitation	10V (15V Maximum)
Zero Balance	± 0.02 mV/V	Reference Max. Platform Size	400 × 400 mm
Non-linearity	< ± 0.017%	Insulation Resistance	> 2 [50V DC] GΩ
Repeatability	< ± 0.017%	Compensated Temperature Range	-10°C to 50°C / 14°F to 122°F
Hysteresis Error	< ± 0.017%	Safe Overload	150% of full scale
Creep in 30 min.	< ± 0.023%	Breaking Overload	300% of full scale
Input Resistance	385 Ω ± 15	Seal Type / IP Rating	Environmentally Sealed / IP66
Output Resistance	350 Ω ± 3	Cable Color Code	Exc+ Red Exc- Black Sig+ Green Sig- White Shield Bare
Element Material	2Cr13 Stainless Steel		

PART NUMBER

Rated Capacity	Part No.	Shipping Weight (kg) Approx.
150kg.....	108WSLP-150kg-YZ.....	2.38

INTERCHANGEABLE PRODUCTS

Manufacturer	Model
Mettler-Toledo.....	0756

SINGLE POINTS