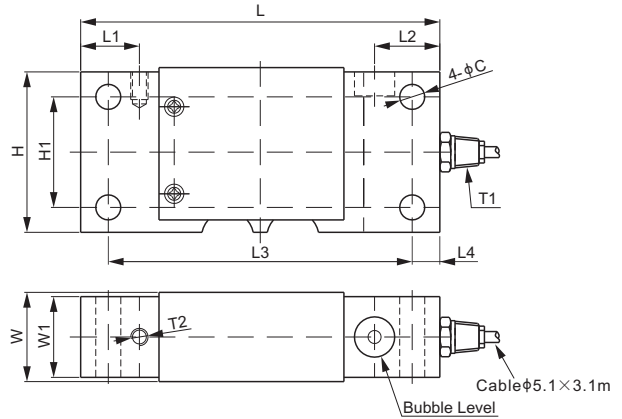
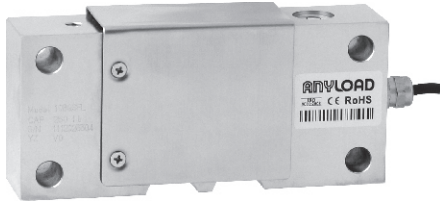


108QSFL



Stainless Steel



CE RoHS

DIMENSIONS

RATED CAPACITY	C	H	H1	L	L1	L2	L3	L4	W	W1	T1	T2
lb/inches												
250	0.45	2.90	2.00	6.50	1.06	1.18	5.50	0.50	1.61	1.46	1/4-18 NPT	5/16-18 UNC Depth13
kg/mm (conversion of above dimensions)												
113.4	11.5	73.7	50.8	165.1	27.0	30.0	139.7	12.7	41.0	37.1	1/4-18 NPT	5/16-18 UNC Depth0.51

SPECIFICATIONS

Full Scale Output	1.0 ± 10% mV/V	Recommended Excitation	10V (15V Maximum)
Zero Balance	± 0.02 mV/V	Reference Max. Platform Size	400×450 mm
Non-linearity	< ± 0.020%	Insulation Resistance	>2 [50V DC] GΩ
Repeatability	< ± 0.020%	Compensated Temperature Range	-10°C to 50°C / 14°F to 122°F
Hysteresis Error	< ± 0.020%	Safe Overload	150% of full scale
Creep in 30 min.	< ± 0.030%	Breaking Overload	300% of full scale
Input Resistance	385Ω ± 15	Seal Type / IP Rating	Environmentally Sealed / IP66
Output Resistance	350Ω ± 3	Cable Color Code	Exc+ Red Exc- Black Sig+ Green Sig- White Shield Bare
Element Material	2Cr13 Stainless Steel		

PART NUMBER

Rated Capacity	Part No.	Shipping Weight (kg) Approx.
250lb.....	108QSFL-250lb-YZ.....	2.6

INTERCHANGEABLE PRODUCTS

Manufacturer	Model
Avery Weigh-Tronix	FLS
Rice Lake.....	RLFLS

SINGLE POINTS