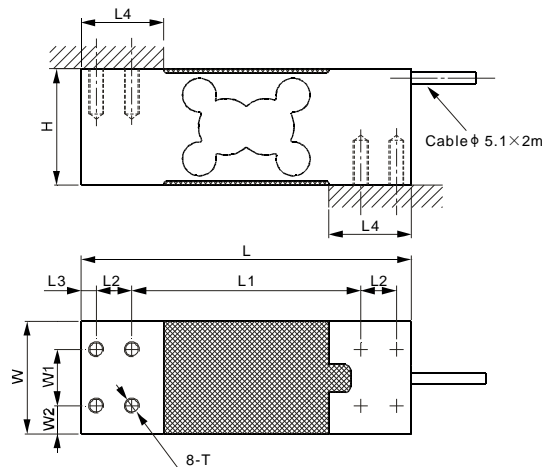
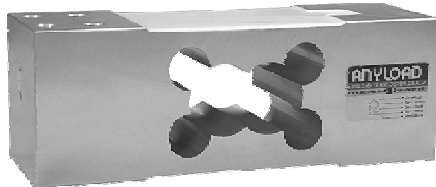


# 108CA



## Aluminum



### DIMENSIONS

RATED CAPACITY	H	L	L1	L2	L3	L4	W	W1	W2	T
<b>kg/mm</b>										
10 -1,000	62.0	176.0	122.0	19.0	8.0	44.0	60.0	30.0	15.0	M8 Depth25
<b>lb/inches</b> (conversion of above dimensions)										
22 -2,204.6	2.44	6.93	4.80	0.75	0.31	1.73	2.36	1.18	0.59	M8 Depth0.98

### SPECIFICATIONS

Type	YZ108	Recommended Excitation	10V (15V Maximum)
Full Scale Output	2.0 ± 10% mV/V	Reference Max.Platform Size	600×700 mm
Zero Balance	± 0.02 mV/V	Insulation Resistance	>2 [ 50V DC ] GΩ
Non-linearity	< ± 0.017%	Nominal Temperature Range	-10°C to 40°C / 14°F to 104°F
Repeatability	< ± 0.017%	Safe Overload	150% of full scale
Hysteresis Error	< ± 0.017%	Breaking Overload	300% of full scale
Creep in 30 min.	< ± 0.023%	Seal Type / IP Rating	Environmentally Sealed / IP66
Input Resistance	415Ω ± 15	Cable Color Code	Exc+ Red      Exc- Black
Output Resistance	350Ω ± 3		Sig+ Green    Sig- White
Element Material	Aluminum		Shield Bare

SINGLE POINTS

### PART NUMBER

Rated Capacity	Part No.	Shipping Weight (kg) Approx.
10kg	108CA-10kg	1.5
20kg	108CA-20kg	1.5
30kg	108CA-30kg	1.5
60kg	108CA-60kg	1.5
100kg	108CA-100kg	1.5
150kg	108CA-150kg	1.5
200kg	108CA-200kg	1.5
250kg	108CA-250kg	1.5
300kg	108CA-300kg	1.5
500kg	108CA-500kg	1.5
600kg	108CA-600kg	1.5
750kg	108CA-750kg	1.5
1t	108CA-1t	1.5

### INTERCHANGEABLE PRODUCTS

Manufacturer	Model
HBM	PW24A
Vishay TedeA-Huntleigh	1263



200kg-2t: NTEP 1:4 000 Class III, Single Cell



10kg-500kg: OIML C3, Y=4 300;