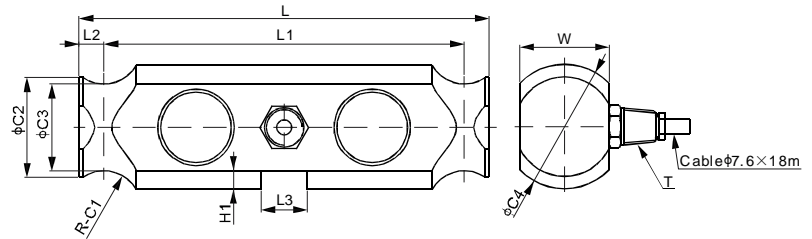
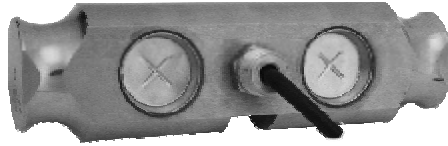


102FS



Stainless Steel



CE RoHS

DIMENSIONS

RATED CAPACITY	C1	C2	C3	C4	H1	L	L1	L2	L3	W	T
lb/inches											
50,000; 75,000	0.75	2.00	1.96	2.50	0.38	8.25	7.25	0.50	0.93	1.80	1/2-14 NPT
kg/mm (conversion of above dimensions)											
22,679.9; 34,019.8	19.0	50.8	44.7	63.5	9.7	209.6	184.2	12.7	23.6	45.7	1/2-14 NPT

SPECIFICATIONS

Full Scale Output	2.0 ± 0.25% mV/V	Recommended Excitation	10V (15V Maximum)
Zero Balance	± 0.02 mV/V	Insulation Resistance	>2 [50V DC] GΩ
Non-linearity	< ± 0.030%	Compensated Temperature Range	-10°C to 50°C / 14°F to 122°F
Repeatability	< ± 0.017%	Safe Overload	150% of full scale
Hysteresis Error	< ± 0.023%	Breaking Overload	300% of full scale
Creep in 30 min.	< ± 0.023%	Seal Type / IP Rating	Welded Seal / IP68
Input Resistance	700 Ω ± 10	Cable Color Code	Exc+ Red Exc- Black
Output Resistance	700 Ω ± 5		Sig+ Green Sig- White
Element Material	2Cr13 Stainless Steel		Shield Bare

PART NUMBER

Rated Capacity	Part No.	Shipping Weight (kg) Approx.
50Klb.....	102FS-50Klb-YZ	5.0
75Klb.....	102FS-75Klb-YZ	6.0

INTERCHANGEABLE PRODUCTS

Manufacturer	Model
Cardinal.....	DB50000S
Cardinal.....	DB75000S
Rice Lake.....	RLDB50000S
Rice Lake.....	RLDB75000S

DOUBLE ENDED BEAMS