

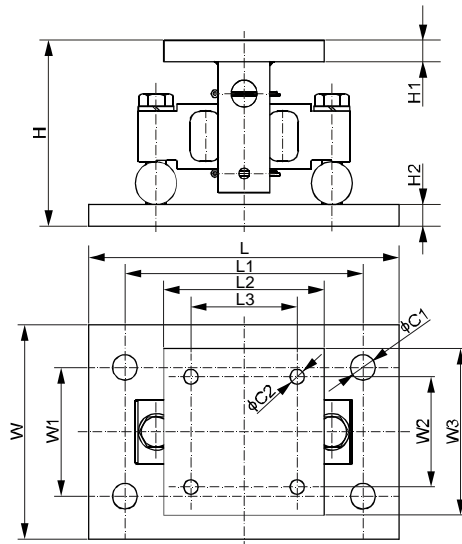
### Features:

- Assembles: 102DH double ended beam load cell
- Capacities: 5Klb-200Klb
- Center pivoted and self-checking with anti-lifting protection
- Sliding pin design compensates for thermal expansion and contraction

### Load Cell Certifications:



Load Cell Not Included.



### DIMENSIONS

LOAD CELL CAPACITY	C1	C2	H	H1	H2	L	L1	L2	L3	W	W1	W2	W3
<b>lb/inches</b>													
5,000-20,000	1.06	0.56	5.27	0.50	0.75	11.00	8.00	5.50	3.00	7.50	4.00	3.00	5.50
30,000-75,000	1.19	0.69	8.42	0.75	1.00	15.00	11.5	7.76	5.13	10.0	6.00	5.13	7.76
100,000-150,000	1.38	0.81	9.63	1.00	1.25	18.00	14.0	10.0	7.50	12.0	9.00	7.50	10.0
200,000	1.88	1.06	14.97	1.57	1.57	24.02	20.0	12.0	9.00	12.0	7.99	9.00	12.0
<b>kg/mm</b> (conversion of above dimensions)													
2,268-9,071.8	27.0	14.3	133.9	12.7	19.0	279.4	203.2	139.7	76.2	190.5	101.6	76.2	139.7
13,607.8-34,019.4	30.2	17.5	213.9	19.0	25.4	381.0	292.1	197.0	130.4	254.0	152.4	130.4	197.0
45,359.2-68,038.9	35.0	20.6	244.5	25.4	31.8	457.2	355.6	254.0	190.5	304.8	228.6	190.5	254.0
90,718.5	47.8	26.9	380.3	40.0	40.0	610.0	508.0	304.8	228.6	304.8	203.0	228.6	304.8

### PART NUMBER

Load Cell Capacity	Part No.	Shipping Weight (kg) Approx.
5Klb-20Klb	102DHM3-(5-20)Klb	13.0
30Klb-75Klb	102DHM3-(30-75)Klb	43.0
100Klb-150Klb	102DHM3-(100-150)Klb	76.0
200Klb	102DHM3-200Klb	150.0

### INTERCHANGEABLE PRODUCTS

Manufacturer	Model
Rice Lake	EZ Mount 1